

Section 170 Heritage and Conservation Register Overview Report

Australian Technology Park, Eveleigh



Futurepast Heritage Consulting P/L

Updated version December 2009

INTRODUCTION	2
BACKGROUND	4
THE EVELEIGH LOCOMOTIVE WORKSHOPS PRECINCT	5
THE LOCO WORKSHOPS	6
THE NATIONAL INNOVATION CENTRE	7
THE INTERNATIONAL BUSINESS CENTRE	8
THE WATER TOWER	9
THE MACHINERY COLLECTION	9
METHODOLOGY	15
CHALLENGES	15
FINDINGS	16
ITEMS RECOMMENDED FOR LISTING ON THE S170 REGISTER	18
ITEMS WITH INTERPRETIVE VALUE FOR INCLUSION ON THE S170 REGISTER	26
ITEMS NOT LOCATED, PRESUMED DISPOSED	28
ITEMS RECOMMENDED FOR DISPOSAL	29
RECOMMENDATIONS FOR FURTHER RESEARCH	32
DISPOSAL PROCEDURE	33
CONSERVATION RECOMMENDATIONS	34
TAGGING	37
RECOMMENDATIONS	38

APPENDICES

Appendix A – List of all items assessed by the project

Appendix B – List of all S170 Register items

Appendix C – List of all State significant items and full item reports

Appendix D – List of all items of local heritage significance

Introduction

This report outlines the process of preparing the Section 170 Heritage and Conservation Register for Australian Technology Park Precinct Management Ltd ('ATPPM'). ATPPM is a State-owned corporation with the responsibility for and control of the Australian Technology Park ('ATP') at the former Eveleigh Locomotive Workshops, located in Redfern in inner city Sydney. ATPPM is a sub-entity of the Redfern-Waterloo Authority, a government entity established to oversee the revitalisation of this area of inner Sydney.

In accordance with the requirements of Section 170 of the NSW *Heritage Act* 1977, every government agency is required to maintain a register of heritage assets, known as a 'Heritage and Conservations Register' (the 'S170 Register'), which outlines the agency's holdings of assets with heritage value. Agencies are also required to prepare a Heritage Asset Management Strategy (the 'HAMS') which outlines the agency's strategic approach to managing those heritage assets. Futurepast Heritage Consulting P/L ('Futurepast') was engaged to prepare the S170 Register and HAMS for ATPPM in 2008.

While there had been considerable examination of the heritage values and assets located at the Locomotive Workshops site, the vast majority of the heritage assets consist of items of machinery and moveable heritage such as tools, which relate to the use of the site as a locomotive workshop from 1888 until circa 1988. The last detailed inventory of the collection had occurred in 1996 and since that time, the Australian Technology Park had been established, extensively redeveloped, and passed through the hands of several different government agencies to manage, before passing to the Redfern-Waterloo Authority in 2004. While some conservation and interpretive work had been undertaken on the site, particularly during the period the site was managed by the Sydney Harbour Foreshore Authority between 2001 and 2004, there had not been a Heritage Register as such throughout that period. Additionally, items not related to the Eveleigh Locomotive Workshops had been transferred to the site from the Chullora Railway Workshops and the Eveleigh Carriage Workshops, resulting in a mixing of the collection.

ATPPM commissioned Futurepast to examine the heritage assets located within the Australian Technology Park, identify those assets with heritage value and make recommendations for the retention, management and, in some cases, disposal of those assets. This included an examination of the buildings, features, machinery and collections located on the ATP site. This work was undertaken to bring ATPPM in compliance with the State Agency Heritage Guidelines and the requirements of Section 170 of the *Heritage Act*, in advance of the mandatory compliance deadline of December 2009.

The review of the heritage assets located at the ATP, the compilation of the S170 Register and the completion of the HAMS was undertaken over the course of February–June 2008. The S170 Register and the HAMS were endorsed by ATPPM in August 2008 and submitted to the Heritage Council for their endorsement in

September 2008. The Heritage Council endorsed the ATP S170 Register at its meeting of November 2008.

This report was updated in December 2009 to fix minor typos and update the status of some items.

The project team for this work was:

- MaLaren North, Futurepast Heritage Consulting P/L
- Penny Crook, Heritage Consultant

The project team would like to thank:

- Roy Waklin-King, ATPPM
- Chris Saunders, ATPPM
- Graham Stevens, ATPPM
- Bill O'Reilly, ATPPM
- Tim Smith, Heritage Branch, Department of Planning
- Elizabeth Robertson, Heritage Branch, Department of Planning
- Stewart Watters, Heritage Branch, Department of Planning
- Laila Ellmoos, Department of Commerce

Background

The Australian Technology Park is located in one half of the former Eveleigh Railway Workshops Precinct. The Precinct covered the areas north and south of the Redfern railway line, and included the Locomotive Workshops (south of the rail line), the Carriage Workshops and the North Eveleigh Precinct (both north of the line). The ATP encompasses most of the area of the former Locomotive Workshops, however it excludes the Large Erecting Shop to the west and the area of the former Running Sheds. It also excludes any areas north of the railway line.

This report, the S170 Register and the HAMS apply only to the area referred to as the 'Eveleigh Locomotive Workshops Precinct', which are the only areas within the responsibility of ATPPM. All other areas within the larger former Railway Workshops Precinct are the responsibility of other government agencies and are not dealt with here.



Figure 1 - Eveleigh Railway Workshops Location Plan

The Eveleigh Locomotive Workshops Precinct

The Eveleigh Locomotive Workshops Precinct was progressively redeveloped as the Australian Technology Park from the mid-1990s under a Masterplan. The Precinct includes three historic buildings – the Locomotive Workshops (‘Loco Workshops’), the former Works’ Managers Office (now the International Business Centre or ‘IBC’) and the Engine Shop (now the National Innovation Centre, or ‘NIC’). The other major historic feature on site is a wrought iron water tower near the IBC. The remainder of the heritage items consist of items of machinery and other remnant operational equipment, primarily located in and around the Loco Workshops. Collectively, this is referred to as the ‘Eveleigh Locomotive Workshops Machinery Collection’.



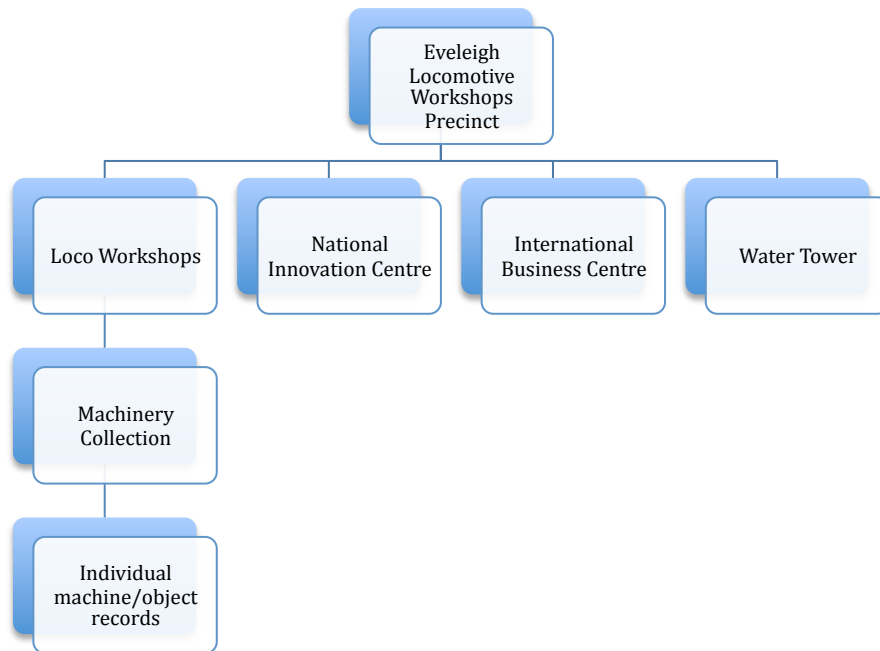
Figure 2 - The Eveleigh Locomotive Workshops Precinct
The boundary of the ATP site is outlined in red.

The southern half of the ATP site includes a number of commercial office buildings, added to the site since the mid-1990s. These buildings do not have any heritage value in their own right, although one item of the machinery collection is on display in the lobby of the BioMed Building. The rest of the site may have some residual archaeological potential, which is not addressed as a part of this study, however archaeological assessments are routinely prepared when planning for a new building

in the Precinct. There is also a train carriage located in Innovation Plaza, between the Loco Workshops and the NIC, used as offices by the railway heritage group 3801 Ltd. This carriage belongs to 3801 Ltd and was brought onto the site circa 1995. It has no particular significance to this site and is not included in the Heritage Register for the site.

The entire Precinct is assessed as being of State heritage significance and is listed on the State Heritage Register.

To reflect this hierarchy within the site, the S170 Register records are organised as follows:



The Loco Workshops



Figure 3 - The Locomotive Workshops (south facade)

The main building within the ATP is the Loco Workshops, which is a very large 1880s locomotive workshop building, consisting of 16 bays and is nearly 500m long. The

building is brick walled with a metal roof supported on metal trusses. In the mid-1990s, the Loco Workshops were converted to commercial office space, with a large exhibition hall in Bays 10 to 14, a lecture theatre, commercial kitchen and office suites. Bays 1 and 2 at the east end of the building were retained to display and store the heritage machinery collection. Several annexes are located at the south side of the building, including annexes outside Bays 1 to 4 which contain a range of historic in situ machinery. Most other bays had two to three levels of commercial office space inserted within them. A range of interpretation works have been undertaken at the site, including a large display of historic machinery which has been interpreted in Bay 10, and elsewhere throughout the building. While Bays 1 and 2 contain a range of in situ historic machinery and equipment, these areas require a degree of conservation works before they can be meaningfully interpreted.

The Loco Workshops are assessed as having State heritage significance and are listed on the State Heritage Register.

The National Innovation Centre



Figure 4 - the National Innovation Centre (north facade)

The National Innovation Centre was originally the Engine Shop, added to the Locomotive Workshops Precinct in 1907 to allow the construction of new locomotive engines at Eveleigh. The building was extended to the south in 1914. The building served as the main location for construction of locomotive engines on the site, until such construction ceased altogether in 1952. The building became disused in 1988 when the Workshops were finally shut down and was converted to its present use as commercial office space in the mid-1990s.

The NIC building has had three levels of new commercial office space inserted within it. Areas of the original building structure remain visible, including the cast iron columns, steel roof trusses and a few items of equipment. The only in situ equipment in this building includes the overhead travelling crane in the main lobby, a hoist attached to a metal support column and a row of sinks, which were important to the labour history of the site, as they represented the first indoor washing facilities which were made available to the railway workers, as a result of considerable union lobbying.

The National Innovation Centre is assessed as having State heritage significance and is listed on the State Heritage Register.

The International Business Centre



Figure 5 - The International Business Centre (south facade)

The International Business Centre was the first building adaptively reused at the ATP site. The building was originally the Works Managers' Office, built in 1887 as a part of the original construction of the Railway Workshops. The building was the seat of administrative control within the site, containing both the Pay Office and the Timekeepers' Office. A large brass bell contained within a decorative cast iron bell tower rang the start and end of shift on the site. The building is located in the north-east corner of the Locomotive Workshops site.

In 1994/5 the building was the first of the buildings on site to be renovated for the establishment of the Australian Technology Park and is now known as the International Business Centre. The building was reconfigured internally at that time and contains essentially no original features. Externally the building is somewhat modified but not essentially changed from its 1940s configuration.

The International Business Centre is assessed as having State heritage significance and are listed on the State Heritage Register.

The Water Tower

The Water Tower is a typical, square, open topped elevated reservoir, used throughout the railway system to supply water to the site. The Water Tower is presently disused, and has some surface rust and minor superficial conservation issues which should be addressed. The Water Tower is a prominent local landmark, and has given its name to the adjacent Water Tower Apartments. Water towers of this nature were used throughout the railway system and, while some survive, they are not generally found in urban areas. While not particularly noteworthy on its own, the Water Tower is a significant contributory element to the Locomotive Workshops Precinct.

The Water Tower is assessed as having State heritage significance in the context of the ATP and is included in the S170 Register.



Figure 6 - The Water Tower (north elevation)

The Machinery Collection

In addition to the significant buildings within the Locomotive Precincts, the ATP site boasts a large collection of intact machinery, tools and other equipment relating to the railway heritage of the site. This collection includes over 400 individual items, building fixtures, features and sub-collections (such as sets of tools). The collection is mainly housed within Bays 1 and 2 of the Loco Workshops, with various elements of

the collection spread throughout the Loco Workshops and interpreted. A small number of items have been located outside for many years and require urgent conservation treatment.¹

The Machinery Collection, as a whole, is assessed as having State heritage significance and is listed on the State Heritage Register. Individual items have not been listed on the State Heritage Register, however the major elements of the collection are noted in the overall listing for the Machinery Collection. Detailed items records are held by ATPPM for each of the individual items in the collection.²

A small number of non-significant elements have been identified within the collection and these are specifically noted and recommended for disposal. There are also a small number of elements that require a degree of additional research before a final decision is made regarding their future. Where items have been identified as coming from another collection, e.g. the Carriage Workshops, they are recommended as being returned to that collection (subject to the agreement of the other agency). The Office of Rail Heritage has also been consulted on this and has expressed interest in taking a few smaller elements of the collection.



Figure 7 - Bay 1 South & Steam Crane

Much of the machinery collection is housed in Bays 1 and 2 of the Loco Workshops. This photo shows the Steam Crane, located in the central part of Bay 1, as well as a

¹ December 2009 note – these items have now been relocated within Bay 1 North and/or have been take off site for conservation.

² December 2009 note – in discussion with the Heritage Branch, Department of Planning, a decision was made to list the Machinery Collection as a whole and not to include the individual elements of the collection on the State Heritage Register. This is consistent with collections management practice for other government agencies with collections of moveable heritage items.

view into Bay 1 South, which contains a variety of in situ blacksmithing and forging equipment.



Figure 8 - Hand tools in Bay 1 North

Much of the collections consists of in situ assemblages of hand tools and small items of equipment such as these fullers and swages used with the Davy Press. Individually, these items are not particularly significant but they are important in the interpretation and understanding of the Locomotive Workshops and their operation.

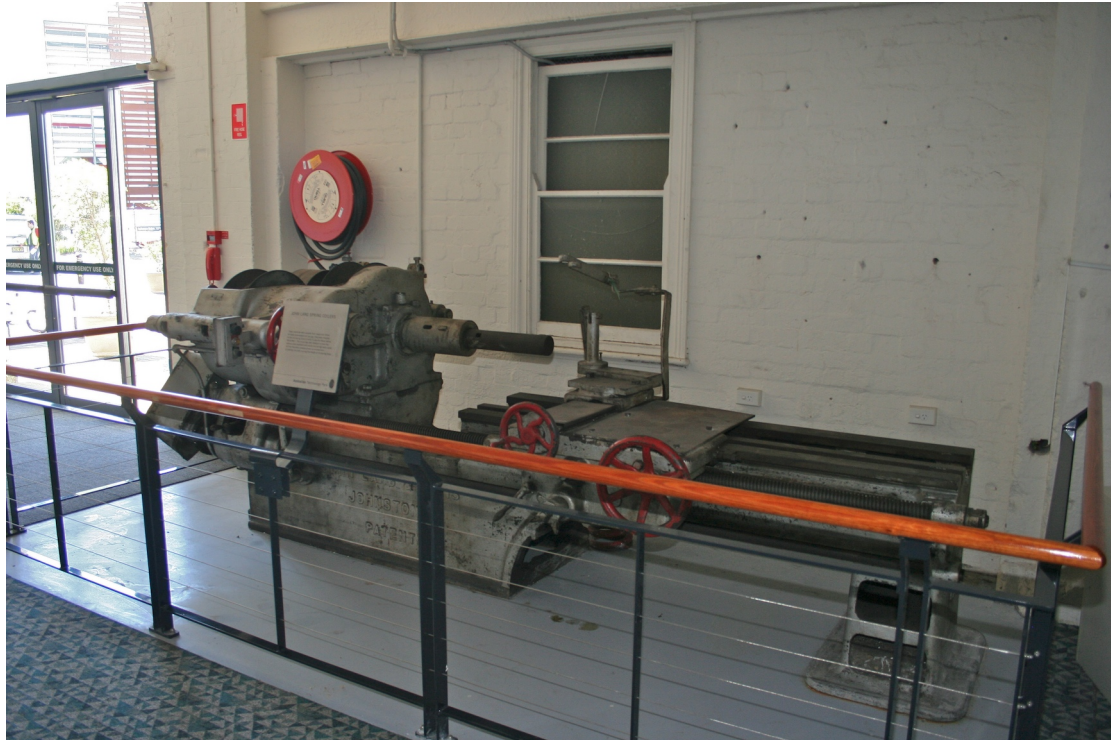


Figure 9 - Machinery interpreted within Bay 4

Individual items of machinery have been interpreted throughout the Loco Workshops, including in the following locations:

- Bay 3 central corridor
- Bay 4
- Bay 8
- Bay 10
- Bay 15
- Bay 16

These items were placed throughout the building during the period the site was managed by the Sydney Harbour Foreshore Authority, and include some interpretive signage. Where possible, machinery was placed back into the bay from which it originally came, however this was not always possible. None of these interpreted items are in any type of functional relationship with one another. All items are for static display only.



Figure 10 - Machinery interpretation in Bay 10

Bay 10 contains the largest area of interpreted machinery, which occupies most of the northern half of that Bay. Many of the larger machines which had been relocated from around the building have been collected here, with some interpretive signage. Their present arrangement is not however conducive to understanding their function or use within the Workshops.



Figure 11 - The boilers located in the Bay 2 Annex

Significant elements also exist outside within the Precinct. These include the boilers shown above, which were initially coal, and later gas-fired and powered much of the machinery in the Workshops. While all of these external elements are non-functional, they are important to the understanding of the place and many of them require conservation.



Figure 12 - Davy Press in Bay 1 North, Loco Workshops

The Machinery Collection includes such large-scale items as the Davy Press, as well as number small items such as hand tools, spare parts are partially-worked items.

Methodology

The Section 170 Register was prepared to bring ATPPM in compliance with the requirements of the *Heritage Act 1977*, as well as to provide practical management guidance on the future management of the collection and conservation priorities for the buildings and other site elements. These key requirements were then outlined as actions within the Heritage Asset Management Strategy for ATPPM, which provides a series of key actions and targets over a five year horizon.

The methodology for preparing the Section 170 Register was as follows:

- Review the 1996 Godden Mackay inventory of the machinery collection
- Review the 2002 OCP Conservation Management Plan for the Loco Workshops
- Inspect all areas of the site for potential heritage items
- Record all potential heritage items within the SHI database
- Assess the heritage significance of recorded items
- Make recommendations as to the retention or disposal of those items from the Section 170 Register
- Develop general conservation guidelines for different classes of item in the Machinery Collection and specific recommendations for each of the built elements

Consultation on this process was undertaken with ATPPM management, the Heritage Branch and the Office of Rail Heritage, during the course of developing the Register.

Once completed, the Register was provided to the ATPPM Managing Director at ATP Board for endorsement, prior to being forwarded to the Heritage Council for its endorsement.

Challenges

One of the major challenges in the development of the Register was the location and verification of what items remained on the site, determining whether these items were originally associated with the Eveleigh Locomotive Workshops and, if not, what should be their ultimate fate. The Register was prepared in the understanding that the ATP is now a commercial office precinct, not a museum or collecting institution, and therefore only items relating to the core collection and the history of the site would be retained. Items from other sites, or items relating to general railway history with no specific association with the site would be recommended for disposal.

While there have been several inventories prepared for the ATP site and its collection, none of the inventories were up-to-date and there had been very little inventory control since the redevelopment of the site in the 1990s. At least three separate numbering systems were identified, including the 1996 Godden Mackay inventory, a State Rail Authority barcode inventory and a later 'ATP' inventory. Up to 5 different tagging and numbering systems were identified across the various items of machinery and equipment, however there was no one 'master list' which included all items and

items were described inconsistently across the various systems. Many items had been relocated from their last recorded positions (as noted in the 1996 GM study) and other items were identified which appeared on no previous inventories for the site.

The project dispensed with earlier numbering systems, but did reuse descriptive information wherever possible. Old inventory numbers were recorded for each item, where present, and noted in the SHI database to allow future cross referencing with old reports, if necessary. These include:

- Godden Mackay 1996 numbers – Numbered 1 to 220, on buff paper tags
- ATP numbers – Numbered ‘ATP1234’, on blue paper tags
- SRA barcode tags – Numbered ‘SRA001234’, on metal barcodes stuck to items

Other numbering systems were also present, including from the operational period of the Workshops, recorded as NSWGR (‘NSW Government Railways’) or NSWTD (‘NSW Technical Department’). While no master reference was located for these numbers, they have been noted in the database for future research.

Some items displayed brass tags, with a 1, 2 or 3 digit number etched into the tag, which may relate to the 1986 Don Godden and Associates study of the site. Few of these tags were noted and they were not recorded.³

The tenant of Bays 1 and 2 South, Wrought Artworks, has labelled selected items of equipment owned by the business with buff coloured paper tags with a number starting with “GN”. Items so tagged were not recorded by this project.

Some of the items of larger machinery display engraved metal plates reading ‘Prop of the National Trust – Do Not Scrap’, which have been welded to the item. These plates represent an instance of ‘guerrilla conservation’ from the 1980s, where conservation advocates for the site affixed these plates to machinery in advance of the scrap auction held at the site in the late 1980s. These plates are part of the social history of the place and should be retained, however the items so tagged are not now, nor have they ever been, the property of the National Trust.

Findings

The review of the ATP’s heritage assets has found that, despite the lack of any clear inventory control over the last decade, the vast majority of items identified in the 1996 study of the site were still present and, generally, in good condition. A few smaller items cannot be located and some items of machinery appear to have been disposed of previously. The smaller items, such as racks of hand tools, have never been catalogued in detail and that level of cataloguing has not been undertaken as a part of this exercise. It is likely that some small elements of the collection have been lost due to theft or accidental disposal, however this represents a small minority of

³ **December 2009 note** – the re-tagging of heritage items commenced in November 2009 in line with the recommendations of this report. Where items were re-tagged, all previous tags were removed, except for SRA adhesive barcodes (due to concerns about damaging the items during removal).

items and could have occurred any time in the last decade. In total 482 items, structures or collections of smaller items were assessed by the project, with 403 items recommended for listing on the S170 Register. Of these 403 items, 6 were recommended for listing as items of State heritage significance and 397 as items of local heritage significance. The remaining 79 items include items identified in the 1996 study which could not be relocated, or items which are recommended for disposal in accordance with the Disposals Procedure outlined later in this document.

Most items of machinery are not in operable condition, save for those still in use by the tenants of Bays 1 and 2. Many items have been set up for static display purposes around the Loco Workshops, particularly in Bay 4 and Bay 10. This precludes these items being placed into service. Additionally, much of the equipment in Bays 1 and 2 has not now been used for nearly 2 decades and its suitability for any future operation other than static display and interpretation is not known. Certain assumptions were made in the 1996 study regarding what aspects of the site were to be kept in operation, such as the placing of the boilers back into service to operate in situ machinery for display purposes however this has not eventuated. It is considered unlikely that any of these systems could be placed back into service without substantial and costly intervention and this report assumes the current situation of static display of the majority of the collection will continue.

Those items still in use by the tenants of Bays 1 and 2 appear to be in operationally sound condition although the frequency and nature of maintenance to these items is not known. Many of these in-use items have had recent safety guards. While the installation of these guards to allow the continued safe operation of the machinery is acceptable, should any of these item come out of service it is recommended the new guards are removed, to allow clearer understanding of the historic operation of the equipment (and the risks involved in its operation).

Recommendations have been broken into three categories:

- *Recommended for listing on the S170 Register*
These items have an historic association with the Locomotive Workshops Precinct and enhance the understanding of the history of the place.

These items are considered part of the Eveleigh Locomotive Workshops Machinery Collection, which is collectively listed on the State Heritage Register.

- *Recommended for disposal*
These items are not originally associated with the Workshops, are in poor condition or are rubbish. This includes elements of historic building fabric which have been retained but are considered to have no prospect of reuse on the site. The presence of these items on site hinders the understanding of the Collection and limits interpretive opportunities.

These items are considered to have insufficient significance to warrant retention and should be disposed of through the Disposals Procedure outlined in this document.

- *Recommended for further research*

These items have an unclear provenance and may have some association with the Workshops but require further research to verify their association and heritage value.

This category includes a small number of items of uncertain provenance. If the items can be conclusively shown to have historical association with the Locomotive Workshops, the items should be added to the collection. If however the items are not from the Locomotive Workshops they should be disposed of in accordance with the Disposals Procedure outlined in this document.

Location descriptions for items are in accordance with the following system:

- Bay Number, N(orth) or S(outh) – e.g. Bay 1S (Bay 1 South). This uses the present 1-16 Bay numbering system, with Bay 1 at the east and Bay 16 at the west of the Loco Workshops. This is the new Bay numbering imposed on the site in the 1990s.
- Position E(ast) W(est) C(entre) – e.g. 5C (Column Grid 5, Centre of Bay). This uses column grid positions running 1-15 from the south to the north side of the Loco Workshops. This is the historical manner of recording column grid position.
- Items located in another building, or outside are denoted as such.

Items recommended for listing on the S170 Register

The following items are recommended for listing on the ATP S170 Register. Together, these items form the Eveleigh Locomotive Workshops Machinery Collection, which is listed on the State Heritage Register. Items recommended for inclusion in the S170 Register are those which relate directly to the core manufacturing processes at the Workshops, i.e. those related to locomotive manufacture and particularly those items which help illustrate the functions of the intact assemblages of equipment in Bays 1 and 2 and Annexes 1, 2 and 4. While there were many other ancillary industrial and manufacturing processes undertaken at the Locomotive Workshops and in the wider Eveleigh Railway Precinct, it is not possible to effectively illustrate all of those processes at the ATP site given the substantial conversion of the buildings and the limited areas for display.

Individual items have not been listed on the SHR and have been tagged as of 'local' significance in the database. All items should be retained as a part of the Collection and any proposal to remove specific items from the collection will require notification to the Heritage Council under S170A of the *Heritage Act*.

S170 database #	Old Item # ⁴	Item Name	Bay	Position
4745023	23	Collection of Swage Blocks and Dies for the Davy Press	1N	10-11W
4745232		Pile of large work-in-progress billet	1N	10E
4745004	4	Davy Steam Reservoir	1N	10E
4745006	6a	Davy Work in Progress 1	1N	10E
4745485	6c	Davy Work in Progress 3	1N	10E
4745008	8	Metal Case of Shims	1N	10E
4745230	34n	Tool rack	1N	10W
4745002	2	Davy Steam Intensifier	1N	11E
4745484	6b	Davy Work in Progress 2	1N	11E
4745235	9b	Collection of Davy Press tools	1N	11E
4745011	11	Warning Signs for Davy Press	1N	11W
4745016	16	Collection of crane slings	1N	11W
4745021	21	Rack of Tongs and Swages	1N	11W
4745022	22	Rack of Mixed Swages, Fullers, Templates and Hotsets	1N	11W
4745236	34o	Tool rack	1N	11W
4745198	198	Furnace	1N	11W
4745239		Work table with clamping mechanism	1N	12E
4745242		Pile of swages and work-in-progress	1N	12E
4745001	1	Davy Press	1N	12E
4745003	3	Davy Hydraulic Reservoir	1N	12E
4745012	12	Punches, Dies and Swage Blocks	1N	12E
4745014	14	Stack of Assorted Metal Pieces	1N	12E
4745240		Furnace	1N	12W
4745018	18	Maintenance Tool Cabinets for the Davy Press	1N	12W
4745019	19	Equalising Beams for Diesel Locomotives	1N	12W
4745020	20	Rack of Swages and Fullers	1N	12W
4745238	34p	Tool rack	1N	12W
4745129	129	Furnace	1N	12W
4745246	24e	Metal Work Table for Davy Press	1N	13E
4745250	5e	Balanced Billet Holder E	1N	13E
4745005	5a	Balanced Billet Holder A	1N	13E
4745247	5b	Balanced Billet Holder B	1N	13E
4745248	5c	Balanced Billet Holder C	1N	13E
4745249	5d	Balanced Billet Holder D	1N	13E
4745251	5f	Balanced Billet Holder F	1N	13E
4745252	5p	Balanced Billet Holder Stand P	1N	13E
4745253	5h	Balanced Billet Holder H	1N	13E
4745254	5g	Balanced Billet Holder G	1N	13E
4745255	5j	Balanced Billet Holder J	1N	13E
4745256	5k	Balanced Billet Holder K	1N	13E
4745257	5l	Balanced Billet Holder L	1N	13E
4745258	5m	Balanced Billet Holder M	1N	13E
4745259	5n	Balanced Billet Holder N	1N	13E
4745261	5i	Balanced Billet Holder I	1N	13E
4745489	5q	Balanced Billet Holder Q	1N	13E
4745490	5r	Balanced Billet Holder R	1N	13E
4745013	13	Lock Pins and Wedges for Crane Tongs	1N	13E

⁴ These item numbers are from the 1996 Godden Mackay Inventory, which stopped at #219.

S170 database #	Old Item # ⁴	Item Name	Bay	Position
4745024	24a	Metal Work Table for Davy Press	1N	13E
4745243	24b	Metal Work Table for Davy Press	1N	13E
4745244	24c	Metal Work Table for Davy Press	1N	13E
4745245	24d	Metal Work Table for Davy Press	1N	13E
4745017	17	Collection of Large Circular Dies, Swages, Punches and Spanners	1N	13W
4745262	34q	Tool rack	1N	13W
4745207	207	Craven Overhead Crane	1N	14C
4745265	15b	Unfinished Steam Hammer Shaft 2	1N	14E
4745266	15c	Unfinished Steam Hammer Shaft 3	1N	14E
4745115	115	Four Wheeled Trolley	1N	14E
4745267	34r	Tool rack	1N	14W
4745279		Pile of tools and work-in-progress	1N	15E
4745025	25	Furnace for Davy Press Billets	1N	15E
4745277		Pile of wheels, work in progress and tables	1N	15W
4745481		Large Crane Sling	1N	4E
4745218	218	Stephenson 7 Tonne Loco Crane 1083	1N	8C
4745486		Large steel billet	1N	9C
4745260	5o	Balanced Billet Holder O	1N	9E
4745007	7	Steel Spacer Trays	1N	9E
4745009	9a	Balanced Special Holder	1N	9E
4745015	15a	Unfinished Steam Hammer Shaft 1	1N	9E
4745229		Timber crate with tools	1N	9W
4745228	34m	Tool rack	1N	9W
4745226	205b	Height-setting Table	1N	9W
4745227	205c	Height-setting Table and Swage Block	1N	9W
4745488		Military objects	1N	Shed
4745280	68d	Stands of assorted dies	1S	
4745281	68c	Stands of assorted dies	1S	
4745282	68b	Stands of assorted dies	1S	
4745283	68a	Stands of assorted dies	1S	
4745042	42	Roots No. 6 blower 1910	1S	1C
4745061	61	Rootes No. 6 Blower 1910 Pattern	1S	1E
4745041	41	Roots No. 5 Blower 1903	1S	1W
4745060	60	Massey 7 CWT Electro-pneumatic Hammer	1S	2
4745058	58	7CWT Crane	1S	2E
4745059	59	Blacksmith's Forge No. 9	1S	2E
4745075	75	Metal Trolley with two Metal Boxes	1S	2E
4745044	44	Blacksmith's Forge	1S	2W
4745045	45	7 CWT Jib crane	1S	2W
4745064	64	Anvil	1S	2W
4745046	46	10 CWT Jib crane	1S	3E
4745067	67	Warning Sign for 40CWT Steam Hammer	1S	3E
4745057	57	20CWT Steam Hammer	1S	4
4745069	69	Metal Trolley Bins	1S	5
4745487		Mandrel	1S	5C
4745056	56	Oil Furnace	1S	5E
4745072	72	Hot Metal Trolley	1S	5E
4745047	47	Oil furnace (large)	1S	5W
4745054	54	40CWT Arch Steam Hammer	1S	6

S170 database #	Old Item # ⁴	Item Name	Bay	Position
4745062	62e	Tool rack between columns (Bay 1 South - Rack E)	1S	6E
4745053	53	Furnace	1S	6E
4745055	55	10CWT Jib Crane	1S	6E
4745290	62d	Tool rack between columns (Bay 1 South - Rack D)	1S	6E
4745291	62c	Tool rack between columns (Bay 1 South - Rack C)	1S	6E
4745292	62b	Tool rack between columns (Bay 1 South - Rack B)	1S	6E
4745293	62a	Tool rack between columns (Bay 1 South - Rack A)	1S	6E
4745071	71	Billet holders and assorted tools	1S	6E
4745286	66e	Rack of assorted tools (Rack D)	1S	6W
4745048	48	Furnace	1S	6W
4745049	49	Tangye Bros 18" Hydraulic Ram Press	1S	6W
4745050	50	Jib Crane	1S	6W
4745066	66a	Rack of assorted tools (Rack A)	1S	6W
4745284	66c	Rack of assorted tools (Rack B)	1S	6W
4745285	66d	Rack of assorted tools (Rack C)	1S	6W
4745287	66f	Rack of assorted tools (Rack E)	1S	6W
4745288	66g	Rack of assorted tools (Rack F)	1S	6W
4745289	66h	Racks of assorted tools	1S	6W
4745070	70	Warning Sign for 40CWT Steam Hammer	1S	6W
4745051	51	Brett Type Impact Punch	1S	9E
4745052	52	Hydraulic Press	1S	9E
4745475		Reheating furnace	1S	Annex
4745206	206	De Burgue electric shears	1S	Annex
4745294	136b	Mandrel rack & mandrels	2N	
4745377	37g	Tool bench for dies	2N	0W
4745321		Pallet of guards, scrap metal and tools	2N	10-11E
4745322		Timber parts bin	2N	10E
4745323		Anvil base	2N	10E
4745324		Tool rest	2N	10E
4745325		Assemblage of tools	2N	10E
4745319	27d	Blacksmith's Forge and Coke bin	2N	10E
4745029	29	Davis and Primrose Steam Hammer No. 1	2N	10E
4745030	30	Wall crane for Davis and Primrose Steam Hammer No. 1	2N	10E
4745316	34h	Tool racks between columns	2N	10E
4745318	36c	Portable Tool Rack	2N	10E
4745378	37f	Tool shelf	2N	10E
4745315	34e	Tool racks between columns	2N	10W
4745031	31	Davis and Primrose Steam Hammer No. 2	2N	10W
4745036	36a	Portable Tool Rack	2N	10W
4745331		Workshop track trolley	2N	11C
4745333		Timber crate with shaping rods	2N	11c
4745328	27c	Blacksmith's Forge No. 19 and Coke bin	2N	11E
4745033	33	Frazing and Grinding Wheel	2N	11E
4745327	34i	Tool racks between columns	2N	11E
4745039	39	Timber Workbench with Vice	2N	11E
4745326	34d	Tool racks between columns	2N	11W
4745343		Brownbuilt Lockers	2N	12E
4745344		Pile of sheeting, tools and fullers	2N	12E
4745348		Pile of swages, fullers and tools	2N	12E
4745338	27b	Blacksmith's Forge No. 18 and Coke Bin	2N	12E

S170 database #	Old Item # ⁴	Item Name	Bay	Position
4745337	34j	Tool racks between columns	2N	12E
4745172	172	Workbench and Vice	2N	12E
4745339		Brown & Sharpe Line Shafting	2N	12W
4745336	34c	Tool racks between columns	2N	12W
4745204	204a	Line shafting	2N	12W
4745027	27h	Blacksmith's Forge No. 4 and Coke Bin	2N	13
4745353	37d	Tool shelf	2N	13-14E
4745360		Four buckets of tools	2N	13E
4745362		Rack	2N	13E
4745026	26	Rack of Moulds and Templates for Hammer Shop	2N	13E
4745357	27a	Blacksmith's Forge No. 4 and Coke Bin	2N	13E
4745028	28	Davis and Primrose Steam Hammer No. 4	2N	13E
4745351	34k	Tool racks between columns	2N	13E
4745356	36g	Portable tool rack	2N	13E
4745358		Quenching Tank	2N	13W
4745032	32	Davis and Primrose Steam Hammer No. 3	2N	13W
4745350	34b	Tool racks between columns	2N	13W
4745355	36f	Portable tool rack	2N	13W
4745354	37c	Tool shelf for dies	2N	13W
4745123	123	Pedding Haus Shearing Machine	2N	14-15EC
4745369		Steel cupboard for the Whitham Spring Coiler (Item no. 125)	2N	14E
4745372		Collection of tools on top of workbench no. 39	2N	14E
4745364	34l	Tool racks between columns	2N	14E
4745174	174	Edgwick Grinding Table	2N	14E
4745368		Machining Table for Wadkin Router	2N	14W
4745373		Sump tank with drill bits	2N	14W
4745374		Collection of patterns and miscellaneous items	2N	14W
4745376		Items near 36b	2N	14W
4745367	27g	Blacksmith's Forge No. 30 and Coke bin	2N	14W
4745034	34a	Tool racks between columns	2N	14W
4745366	36b	Portable Tool Rack	2N	14W
4745365	37h	Tool box	2N	14W
4745040	40	Dual grinder	2N	14W
4745382	36e	Portable tool rack	2N	15
4745381	36d	Portable tool rack	2N	15
4745384	36i	Tool racks non fixed	2N	15
4745385	36j	Tool racks non fixed	2N	15
4745386	36k	Tool racks non fixed	2N	15
4745387	36l	Tool racks non fixed	2N	15
4745388	36m	Tool racks non fixed	2N	15
4745389	36n	Tool racks non fixed	2N	15
4745390	36o	Tool racks non fixed	2N	15
4745391	36p	Tool racks non fixed	2N	15
4745037	37j	Tool benches for dies	2N	15
4745379	37b	Tool benches for dies	2N	15
4745380	37a	Tool bench for dies	2N	15
4745394		Pattern Rack and Patterns	2N	15C
4745151	151	Quenching Tank	2N	15E
4745155	155	Quenching Tank	2N	15E

S170 database #	Old Item # ⁴	Item Name	Bay	Position
4745383	36h	Tool Rack	2N	15W
4745038	38	Whitworth Lathe bed	2N	15W
4745298	27e	Blacksmith's Forge and Coke bin	2N	9E
4745303		Collection of casting boxes	2N	9E
4745304		Timber box with tools	2N	9E
4745306		Bucket of tools	2N	9E
4745308		Cart and tools	2N	9E
4745312		Counterweight guard for Churchill Grinder	2N	9E
4745296	34g	Tool racks between columns	2N	9E
4745299		Small reheating furnace	2N	9W
4745297	27f	Blacksmith's Forge No. 36 and Coke bin	2N	9W
4745295	34f	Tool racks between columns	2N	9W
4745035	35	Hot-metal Circular Saw	2N	9W
4745397	100d	Stand of tools (portable)	2S	
4745401	100c	Stand of tools (portable)	2S	
4745402	100b	Stand of tools (portable)	2S	
4745102	102d	Racks of tools between columns (Bay 2 South - Rack D)	2S	
4745398	102c	Racks of tools between columns (Bay 2 South - Rack C)	2S	
4745399	102b	Racks of tools between columns (Bay 2 South - Rack B)	2S	
4745111	111	Furnace for Springs	2S	
4745112	112	Spring King Eye Rolling Machine	2S	
4745113	113	Vicars Vane Pump for Spring King Eye Rolling machine	2S	
4745114	114	Controller for Spring King Eye Rolling machine	2S	
4745477		Overhead monorail crane	2S	2-5C
4745478		Racks of tools between columns (Bay 2 South - Rack E)	2S	2E
4745097	97	Furnace with blower	2S	2E
4745098	98	Massey 2CWT Weight Pneumatic Hammer	2S	2E
4745180	180	6' plate rollers	2S	2E
4745182	182	Bennie Metal Guillotine	2S	2E
4745405		Grinder	2S	2W
4745076	76	2-Ton Jib Crane	2S	2W
4745117	117	Town & Sons Boring Machine	2S	2W
4745118	118	Landis Screw Cutting Machine	2S	2W
4745065	65	Quenching Tank with Counter-Weighted Basket	2S	3-4E
4745095	95	Small Furnace	2S	3E
4745096	96	Massey 2CWT Electro-pneumatic Hammer	2S	3E
4745099	99	Furnace with blower	2S	3E
4745116	116	Graham & Normanton Shaper	2S	3W
4745093	93	Blacksmith's Forge No. 26 and Coke Bin	2S	4E
4745491	93	Furnace	2S	4E
4745094	94	Allen Striker (2)	2S	4E
4745403	100a	Stand of tools (portable)	2S	4E
4745102	102a	Racks of tools between columns (Bay 2 South - Rack D)	2S	4E
4745470		Rack of dies and punches for the Ajax machine	2S	4W
4745471		Avery Platform Scale	2S	4W
4745077	77	One Tonne Jib-Crane	2S	4W
4745078	78	Frazing Wheel and Saw	2S	4W
4745079	79	Furnace for the Ajax Forming Machine	2S	4W
4745090	90	Blacksmith's Forge No. 25 and Coke bin	2S	5E
4745091	91	Allen Striker (1)	2S	5E

S170 database #	Old Item # ⁴	Item Name	Bay	Position
4745092	92	Frazing and Grinding Wheel	2S	5E
4745468		Rack of dies for the Ajax Machine	2S	5W
4745469		Stack of dies for the Ajax machine	2S	5W
4745080	80	Jib crane	2S	5W
4745081	81	Ajax Continuous Forging Machine	2S	5W
4745082	82	Frazing Wheel and Saw	2S	5W
4745088	88	Blacksmith's Forge No. 24	2S	6E
4745467		Rack of dies for the Spring King Machine	2S	6W
4745083	83	Frazing and Grinding Wheel	2S	6W
4745120	120	Cincinnati Milling Machine	2S	6W
4745087	87	Blacksmith's Forge No. 23 and Coke Bin	2S	7E
4745466		Rack of dies for Covmac machine	2S	7W
4745084	84a	10 CWT Jib-Crane	2S	7W
4745085	85	Covmac Continuous Forging Machine	2S	7W
4745086	86	Furnace for the Covmac	2S	7W
4745404		C36-class Boiler Header Tank	2S	Annex
4745476		Wall mounted manometer	2S	Annex
4745188	188	C36-class Boiler	2S	Annex
4745189	189	C36-class Boiler	2S	Annex
4745190	190	C36-class Boiler	2S	Annex
4745191	191	C36-class Boiler	2S	Annex
4745203	203	Fuel Tank	2S	Annex
4745153	153	Ryerson Spring Forming Machine 1	3N	8C
4745154	154	Ryerson Spring Forming Machine 2	3N	8C
4745464		Pump Room Tool Collection	3S	Annex
4745184	184	Hydraulic System Electric Motor	3S	Annex
4745185	185	Hydraulic system pump	3S	Annex
4745186	186	Hydraulic System Steam Pump	3S	Annex
4745187	187	Hydraulic System Overhead Reservoir	3S	Annex
4745192	192	Pressure vessel	3S	Exterior
4745193	193	Hydraulic accumulator	3S	Exterior
4745194	194	Hydraulic accumulator	3S	Exterior
4745492		Smith & Coventry Spring Coiler	4N	11C
4745493		Smith & Coventry Spring Coiler	4N	11C
4745158	158	Fielding & Platt Spring Buckling Press	4N	11C
4745156	156	Hydraulic Press and Spring Tester	4N	11W
4745160	160	Rice & Co. Hydraulic Spring Buckling Press	4N	12W
4745197	197	Craven Overhead Travelling Crane L5	4N	9C
4745152	152	Craven Brothers Spring Disassembler	4N	9W
4745196	196	Arrol Overhead Travelling Crane L6	4S	1C
4745202	202	Ransomes & Rapier Overhead Travelling Crane L8	5N	8C
4745150	150	Lang & Sons Spring Coiler MSC-2	5S	1W
4745411		Bay 5 Turntable	5S	Exterior
4745221		Vaughan Overhead Travelling Crane L17	7N	8C
4745134	134	Genevoise Drilling and Boring Machine	8N	10C
4745135	135	Societe Genevoise Hydroptic Jig Borer	8S	2C
4745177	177	Richards' Vertical Borer with Dual Heads	10N	10E
4745168	168	Craven Axle and Journal Lathe	10N	10W
4745169	169	Stirk Planer	10N	11-12W
4745419		Craven Overhead Travelling Crane L7	10N	11C

S170 database #	Old Item # ⁴	Item Name	Bay	Position
4745417		Timber work bench	10N	11E
4745119	119	Herbert Tool and Cutter Grinder	10N	11E
4745138	138	Herbert Twin Drill and Borer	10N	11E
4745416		Bolt Rack	10N	11W
4745132	132	Ormerod Vertical Shaper	10N	11W
4745157	157	Department Double Floor Grinder	10N	11W
4745131	131	Ward Hexagon Turret Lathe	10N	12E
4745141	141	Department Lathe	10N	12E
4745104	104	Churchill Grinder	10N	13E
4745425	136c	Spring Shop Rack, Coils and Tools	10N	13E
4745426	136d	Spring Shop Rack and Mandrels	10N	13E
4745133	133	Webster & Bennett 60" Single Vertical Borer	10N	13W
4745167	167	Denham Centre Lathe	10N	13W
4745427		Traverser	10N	14-15
4745429		Craven Overhead Travelling Crane L13	10N	14C
4745125	125	Whitham Spring Coiler	10N	14E
4745159	159	Furnace	10N	14E
4745428		Wheel Trolley	10N	14W
4745136	136a	Spring Shop Rack and Mandrels	10N	15E
4745205	205a	Height-setting table	10N	15E
4745430		British Electrical Vehicle (BEV)	10N	15W
4745412		Hoist	10N	1W
4745413		Hoist	10N	3W
4745414		Hoist	10N	6W
4745200	200	Tangye 48" wheel lathe	10S	5-6E
4745432		Rack associated with Tangye Wheel Lathe	10S	5E
4745433	37e	Tool shelf	10S	6E
4745431		Urinal	10S	Exterior
4745434		Hoist	11N	10W
4745435		Craven Overhead Travelling Crane L21	11N	11C
4745436		Hoist L241	11S	3W
4745437		Hoist L254	11S	4W
4745438		Hoist L255	11S	5W
4745439		Crane L14	11S	6C
4745440		Babcock & Wilcox Overhead Travelling Crane L16	12N	15C
4745441		Hoist	12S	4W
4745442		Hoist	12S	5W
4745443		Babcock & Wilcox Overhead Travelling Crane L18	13N	14
4745445		Hoist	13S	4E
4745444		Bay 13 Turntable	13S	Exterior
4745225		Hoist	14N	11E
4745224		Hoist	14S	10W
4745222		Vaughan Overhead Travelling Crane L20	14S	2C
4745223		Hoist	14S	8W
4745126	126	Departmental Grinder	15N	15E
4745130	130	BSA Centreless Grinder	15N	15W
4745140	140	Cylindrical Grinder	15N	8-9E
4745127	127	Craven Brothers Pedestal Drill	15S	1E
4745137	137	Brown & Sharpe Universal Grinder	15S	7W
4745447		Grinder	16N	13W

S170 database #	Old Item # ⁴	Item Name	Bay	Position
4745446		Craven Overhead Travelling Crane L15	16N	8C
4745128	128	Robey-Smith Bevel Wheel Planer	BioMed Building	Lobby
4745210	210	Massey Flange Press	Outside	
4745211	211	Wheel Press	Outside	
4745458		Unidentified machine element (brace or support beam?)	Outside	Container
4745460		Pattern moulds	Outside	Container
4745465		Bleeder Valve for Fielding and Pratt Pump	Outside	Container

Items with interpretive value for inclusion on the S170 Register

These items are common types of tools and equipment which were used throughout the Workshops. There is nothing unique or significant about these items individually, but they have interpretive value which can help present the collection. Historically, they may have been moved about the Workshops as required. These items can be relocated around the Workshops as required, to assist with site interpretation or may be retained in service as appropriate. They should not be disposed of and are included in the S170 Register primarily for their interpretive value.

S170 database #	Old Item # ⁵	Item Name	Bay	Position
4745101	101a	Anvil	2N	11Ec
4745103	103	Swage block	2S	
4745422		Lockers	10N	12E
4745418		Hand Trolley	10N	11E
4745415		'Schedule' bin	10N	10E
4745271		Safety Screen	1N	14-15E
4745276		Safety Screen	1N	15E
4745395		Rack	2N	15C
4745361		Stand	2N	13E
4745363		Two buckets of tools	2N	13EC
4745340		Cylinder with scrap metal	2N	12E
4745341		Timber shelf	2N	12E
4745342		Hand crank and wheel	2N	12E
4745349		Lockers	2N	12E
4745334		Rack	2N	11E
4745302		Lockers	2N	9E
4745313		Workshop Switchboard	2N	9E
4745314		Electric blower on shop-built trolley	2N	9W
4745233		Trolley	1N	10W
4745234		Anvil	1N	10W
4745237		Quenching tank	1N	11W
4745472		Anvils	2S	
4745473		Swage blocks	2S	
4745474		Swage blocks	1S	
4745480		Work benches	1S	

⁵ These item numbers are from the 1996 Godden Mackay Inventory, which stopped at #219.

4745482		Trolley, billet moulds and steel billets	1N	9C
4745352		Trolley	2N	13W
4745448		Small Cart	16S	7E
4745420		Four wheel trolley cart	10N	11E
4745424		Tool box	10N	12E
4745278		DC Rectifier	1N	15W
4745393		Portable Welder	2N	15E
4745329		Trolleys	2N	11W
4745371		Toolbox	2N	14E
4745345		Globe Pneumatic Hoist	2N	12E
4745332		Two tool boxes	2N	11c
4745310		Metal bin for steel scrap	2N	9E
4745421		TEO Trolley	10N	11E
4745406		Pilot arc welder	2S	2CW
4745219	219	Craven Crane Name Plate	4N	RWA office
4745274		Pile of door hinges ⁶	1N	14E
4745272		Toolbox	1N	14E
4745311		Line shafting ⁷	2N	9E
4745483		Metal floor plates	1N	8E

⁶ These items should be used to repair the doors in Bays 1 and 2. Once that work has been completed the remainder can be disposed of.

⁷ Belongs to the Brown & Sharpe Universal Grinder in Bay 15S. Should be reinstated in a functional arrangement with that item.

Items not located, presumed disposed

The following items from the 1996 Godden Mackay inventory were not located during this survey and are presumed to have been disposed of previously. The Bay and Position references indicate where these items were located in 1995, at the time of the previous survey. None of the items are in these locations any longer and all other potential locations on site have been surveyed.

S170 database #	Old Item # ⁸	Item Name	Bay	Position
4745408	101b	Anvils	3S	
4745409	101c	Anvils	3S	
4745143	143	Hydraulic Ram	3N	
4745181	181	Craven Bros Plate Rollers		
4745450	204c	Line shafting	Outside	
4745451	204d	Line shafting	Outside	
4745010	10	Hand Trolley for Hot Work	1N	11E
4745068	68e	Stands of assorted dies	1S	
4745073	73	Crane Tong Support	1S	4E
4745074	74	Metal Trolley	1S	3
4745105	105	Buffer Grinder and Quenching Baths	3S	5W
4745106	106	Furnace	3S	6E
4745107	107	Lathe	3S	6W
4745108	108	Smith and Coventry Grinder	3S	5W
4745109	109a	Small Lathe	3S	5W
4745110	110	Furnace	3S	6E
4745142	142	Furnace	3N	10W
4745144	144	Hydraulic Spring Press	3N	9E
4745146	146	Interlocking Gear	3N	9E
4745147	147	Signalling Gear	3N	9E
4745148	148	Furnace	3N	10E
4745162	162	Work table	4N	10E
4745163	163	Electric motor	4N	12E
4745164	164	Electric starter cabinet	4N	13E
4745173	173	Armatures	4N	11W
4745175	175	Electric motor	4N	10W
4745176	176	Electric Motor and Parts	4N	10W
4745178	178	Rectifier	4N	10W
4745183	183	Jib crane 10 cwt	4S	
4745195	195	Jib crane	3S	5E
4745199	199a	Air receivers	Outside	
4745462	199b	Air receivers	Outside	
4745201	201	Platform trolley	3N	12W
4745449 ⁹	204b	Line Shafting	Outside	
4745213	213	Hydraulic press	4N	
4745214	214	Air compressor - Atlas	Air Compressor House	
4745215	215	Air compressor Ingersoll -	Air Compressor House	
4745216	216	Thompson 90 degree V twin compressor	4 Annex	
4745217	217	Thompson 90 degree V twin compressor	4 Annex	

⁸ These item numbers are from the 1996 Godden Mackay Inventory, which stopped at #219.

⁹ Note item accidentally omitted from Sept 2008 version of report.

Items recommended for disposal

The following items have been recommended for disposal. Depending on the nature of the item, disposal is recommended to be through offer to another institution, disposal through sale or disposal as scrap/rubbish.

As a part of the assessment process, consultation was undertaken with the Office of Rail Heritage. In several instances, the ORH has expressed an interest in acquiring certain items, which are noted in the list.

No other items, other than those noted on this list, are recommended for disposal.

Database #	Old Item #	Item Name	Bay	Position	Reason for disposal	Recommendation
4745457		Crane pulley carriage and rope	Outside	Container	Part of a minor item of machinery, which is incomplete. No specific provenance to Eveleigh.	Archivally record and dispose
4745124	124	Reheating Furnace	Outside		As there are other examples of similar furnaces in better condition, it is not considered necessary to conserve this item.	Archivally record and dispose
4745270		Southern Aurora Rail Trolley	1N	14E	Item relocated from Chullora Workshops in 2000. No association with Eveleigh	Archivally record and dispose
4745423		Apprentices' Grinder	10N	12E	Item not provenanced to Eveleigh – originally from TAFE	Offer to TAFE
4745454		Crane pulley carriage and chains	Outside	Container	A minor item of machinery with no inherent significance and no specific provenance to Eveleigh.	Archivally record and dispose
4745273		Goulburn Per Way Workshops Plate	1N	14E	Not provenanced to Eveleigh	Archivally record and dispose
4745309		Ajax pump and Brook motor	2N	9E	A minor item of machinery with no inherent significance and no specific provenance to Eveleigh.	Archivally record and dispose
4745370		Lockers	2N	14E	Poor condition item of uncertain provenance. Better examples retained fore interpretive value.	Archivally record and dispose
4745263		Collection of lamp shades	1N	13W	Poor condition examples of building fabric already in situ. No prospect for reuse.	Archivally record and dispose
4745275		Lockers	1N	14W	Poor condition item of uncertain provenance. Better examples retained fore interpretive value.	Archivally record and dispose

4745346		Motorised pump	2N	12EC	A minor item of machinery with no inherent significance and no specific provenance to Eveleigh.	Archivally record and dispose
4745330		Pope Motor	2N	11E	A minor item of machinery with no inherent significance and no specific provenance to Eveleigh.	Archivally record and dispose
4745375		Crompton Parkinson motor	2N	14W	A minor item of machinery with no inherent significance and no specific provenance to Eveleigh.	Archivally record and dispose
4745231		Lockers	1N	10W	Poor condition item of uncertain provenance. Better examples retained fore interpretive value.	Archivally record and dispose
4745459		Metal stanchions	Outside	Container	Poor condition examples of building fabric already in situ. No prospect for reuse.	Archivally record and dispose
4745161	161	Furnace	10N	14E	Item lacks integrity. Better examples of similar items interpreted on site.	Archivally record and dispose
4745165	165	Pope Electric Motor and Baseplate	10N	13W	A minor item of machinery with no inherent significance and no specific provenance to Eveleigh.	Archivally record and dispose
4745396		Trolley	2N	15C	Dispose or add to prop collection	Archivally record and dispose
4745241		Two Pope motors	1N	12E	A minor item of machinery with no inherent significance and no specific provenance to Eveleigh.	Archivally record and dispose
4745208	208	Wheel shop pivot crane L40	Outside		Restore one example for external static display.	Restore one example, dispose of other as scrap
4745209	209	Wheel shop pivot crane L41	Outside		Restore one example for external static display.	Restore one example, dispose of other as scrap
4745317	66b	Safety Guard	2N	10W	If possible, locate original machine and reinstate.	If not able to be reinstated, dispose
4745264		Cabin for 16 ton crane L5	1N	13-14W	Install in Bay 3 for interpretative purposes or dispose as other in situ examples are located on site.	Offer to Powerhouse or Tram Museum
4745269		Wrought iron beams	1N	14W	Salvaged building components. There are many examples of this type of fabric in situ and no prospect of reuse on site.	Offer as architectural salvage

4745170	170	Metropolitan Vickers motor	10N	10E	A minor item of machinery with no inherent significance and no specific provenance to Eveleigh.	Archivally record and dispose
4745145	145	Wadkin Router	2N	14W	Not provenanced to Eveleigh. Relocated from Tram Workshops in 1961. Item is a woodworking machine which is not a core function of the Locomotive Workshops	Offer to Carriage Works
4745463		Air receiver	Outside		Originally from Carriage Works	Offer to Carriage Works
4745149	149	Lang & Sons Spring Coiler MSC4	1N	13W	One of three substantially similar spring coilers, the other two are interpreted in Bays 5S and 10N. May be disposed of to another institutional collection.	Offer to Powerhouse or Thirlmere Rail Museum
4745301		Parts of small blower	2N	9E	Reassemble if possible	Reassemble if possible else dispose
4745305		Blower	2N	9E	Reinstate if possible	If not able to be reinstated, dispose
4745335		Parts from Wadkin Router	2N	11Ec	Reinstate with Router	As per Router, offer to Carriage Works
4745300		Guards and tools adjacent to Hot Metal Circular Saw	2N	9W	Relocate to appropriate functional location.	Dispose of guard if original machine cannot be located.
4745307		Trolley with two motors and a gear box	2N	9E	Common items with no provenance to Eveleigh	Retain trolley for prop collection, dispose of motors and pumps
4745268		Demountable timber office	1N	14W	Common item which has some utility but no inherent significance	Retain, relocate and use or dispose as required
4745452		Window frames	Outside	Container	Review opportunities for reuse on site in repairs to Bays 1 and 2	If no prospect of reuse, dispose of. Otherwise retain as spare parts.
4745453		Telephone boxes	Outside	Container	These items are typical examples of their class and do not have good historical provenance within the site and are not unique to railway sites.	Transfer to Office of Rail Heritage
4745455		Misc motor and machine parts	Outside	Container	This item has no provenance and is not significant in its own right.	Archivally record and dispose

4745179	179	Pneumatic Gap Riveter Gantry	Outside		This item is incomplete and is not able to be reinstalled within the building or effectively interpreted. Recommended for disposal.	Archivally record and dispose
4745139	139	Allen Striker	2N	11E	This striker was removed from the Carriage Workshops after the closure of works.	Offer to Carriage Works
4745212	212	Berry hydraulic pipe bender	Outside		Item is a typical piece of early industrial machinery, which is not specific to locomotive manufacture. There is no clear provenance of this item to Eveleigh.	Offer to Powerhouse or Thirlmere Rail Museum
4745461		Ticket dies	Outside	Container	Items with some heritage value but are not related to locomotive manufacture	Transfer to Office of Rail Heritage
4745392		Robinson Chisel Mortiser	2N	15C	Origin unknown. As it is woodworking machinery, probably from Carriage Works	Offer to Carriage Works
4745166	166	Machine parts	2N	12-13E	Miscellaneous parts and guards of unknown origin.	Dispose of items if original machines cannot be located.

December 2009 note: reuse options have now been found for the following items initially identified for disposal:

- 4745459 Metal stanchions (to be reused)
- 4745208/4745209 Pivot cranes (1 example being restored and interpreted)
- 4745264 Crane cabin (to be interpreted)
- 4745269 Wrought iron beams (to be reused)
- 4745463 Air receiver (to be interpreted)

Recommendations for Further Research

For a small number of items, it has not been possible to establish conclusively their association (or lack thereof) with the Locomotive Workshops. These items may have come from buildings now demolished on the Locomotive Workshops site, or from some other part of the Eveleigh Precinct, such as the Carriage Workshops. Further research is required into these items. If they can be conclusively shown to be associated with the Locomotive Workshops, they should be added to the Machinery Collection, otherwise they should be disposed of in accordance with the procedures for other items recommended for disposal.

S170 database #	Old Item # ¹⁰	Item Name	Bay	Position	Recommendation
4745456		White Twin Head Vertical Borer	Outside	Container	Further research required. If not provenanced to Eveleigh, may be disposed.
4745359		Remnant Track	2N	13W	Identify purpose or dispose

Disposal Procedure

The following procedure is recommended for any future disposal of items which may be identified as surplus to ATP requirements. In general, items of the collection outside of those identified for disposal in this report should not be disposed of except in exceptional circumstances.

Items within the Machinery Collection may be disposed of in circumstances where it meets several of the following criteria:

- a) the item has no known provenance to the Eveleigh Locomotive Workshops;
- b) the item is of low significance in its own right and makes a limited contribution to the significance of the collection as a whole;
- c) the item was transferred to Eveleigh Locomotive Workshops in the last two decades of its operation;
- d) the item is in an irreparably poor condition;
- e) the disposal of the item will not significantly diminish the significance of the collection as a whole.
- f) the item does not relate to the locomotive manufacturing history or processes undertaken within the Eveleigh Locomotive Workshops;¹¹
- g) the item poses a significant safety risk that cannot be eliminated or made safe through cost-effective means (e.g. asbestos);
- h) the item is a component of a larger item, system or structure which lacks integrity and cannot be effectively interpreted through retention of that component.

¹⁰ These item numbers are from the 1996 Godden Mackay Inventory, which stopped at #219.

¹¹ i.e. it relates to manufacturing processes not undertaken within the Locomotive Workshops but may have been undertaken elsewhere at Eveleigh such as the Carriage Workshops

Suggested Procedures for Disposal

- 1) The recommendation for disposal must be based on a thorough assessment of each item by a qualified specialist or heritage advisor;
- 2) The justification for disposal for each item should be clearly outlined in a brief report;
- 3) The Heritage Council is notified at least 14 days prior to disposal, in accordance with the requirements of S170A of the *Heritage Act*;
- 4) Prior to disposal, each item should be fully recorded, including multiple photographs;
- 5) The avenue for disposal should follow the following order:
 - a. Offer item to a collecting institution including:
 - i. Carriage Works
 - ii. Powerhouse Museum
 - iii. Office of Rail Heritage
 - iv. Thirlmere Railway Museum
 - v. Tram and Bus Museum
 - vi. Other railway historical societies

Disposal to an institution/group should always be the preferred option. Major items of machinery should only be disposed of to institutions.
 - b. Offer the item for private sale
 - c. Dispose of the item as scrap or waste
- 6) The final destination of the disposed items and the date of their disposal should be retained on file. The S170 Register should be updated at that time.

Conservation Recommendations

Given the scale of the collection, generic conservation recommendations have been prepared for different classes of items within the collection. Some specific conservation recommendations have also been prepared for each of the main heritage buildings, however more detailed specific conservation advice is required for these items long term.

Within the Machinery Collection, the following classes of items have been identified:

- Non-operational machinery – used for static display only
- Nonoperational hand tools – used for static display only
- Operational machinery – used by tenants
- Operational hand tools – used by tenants
- Cranes and hoists – mix of static display and use by tenants

While it may be possible to place some of the non-operational machinery back into service, this is beyond the scope of this project to consider and a machine maintenance specialist will be required to assess any mechanical equipment presently used for static display before considering placing items back into service.

Conservation recommendations for non-operational machinery:

This item should be maintained in a non-operational condition for static display purposes. It should be tagged as DECOMMISSIONED and should be permanently disconnected from all power sources, water or gas supplies. It should be kept dry and under cover at all times. The item should not have material stacked against or on top of it. Any guards, covers or hatches should be kept closed to limit the ingress of dust or accidental damage, unless kept open for interpretive purposes. Where it is necessary to leave guards or hatches off for an extended period, install clear Perspex guards or panels over the openings.

The item should be cleaned of dust annually through wiping, vacuuming or dry brushing. Any exposed operating surfaces (e.g. piston or drive shafts, or other polished metal surfaces) should be sprayed or wiped with a light machine oil annually to retard rust. Any surface rust should have loose flakes removed and the area should be treated with a rust retardant. Any structural rust should be inspected by a specialist and repaired as per their recommendations. Internal mechanisms should be stripped, degreased and repacked to prevent deterioration. The item should retain its patina of use and should not be completely repainted, unless necessary for the conservation of the item.

Should a decision be taken to restore this item to operational condition, it should be inspected by a specialist to determine whether the restoration is feasible and the manner in which recommissioning should be undertaken.

Conservation recommendations for non-operational hand tools and other non-mechanical equipment:

This item should be maintained in a non-operational condition for static display purposes. It should be kept dry and under cover at all times. Where the item is a part of an assemblage or a collection, it should be retained with that collection. Any items temporarily removed for display purposes should be appropriately tagged to allow their return to their original context.

The item should be cleaned of dust annually through wiping, vacuuming or dry brushing. Any surface rust should have loose flakes removed and the area should be treated with a rust retardant. Items of unpainted metal should not be painted under any circumstances.

Conservation recommendations for operational machinery:

This item should be maintained in an operational condition suitable for safe use. The item should be kept dry and under cover at all times. Where necessary, guards or other modern safety equipment should be installed as required, provided this can be done without compromising the heritage significance of the item.

Wherever possible, machinery should be maintained in accordance with the manufacturer's specifications. Where these are not available, the following general policies should apply:

- Machinery should only be operated by people trained in the safe use of the equipment.
- Machinery should be kept free of dirt and grime.
- Any surface rust should have loose flakes removed and the area should be treated with a rust retardant. If necessary, machinery may be repainted to extend the operational life of the machine, in an appropriate paint and to match the existing colour scheme.
- Any structural rust must be inspected and repaired by a qualified specialist before the machine is operated.
- The machine must be inspected daily before use to ensure it is safe to operate and that all obstructions have been cleared. Gaskets and hoses must have no leaks or breaks and all fasteners must be tight. Joints and valves should be regularly inspected and appropriately lubricated before operation.

The machine must be regularly lubricated and oil should be changed annually. The machine should be fully overhauled by a qualified machinist every 400-500 hours of operation, or as directed by the manufacturer.

Records should be kept detailing all servicing of operational machinery including the nature of service, any damage noted and any repairs undertaken.

Operational machinery which is no longer serviceable should be tagged as DECOMMISSIONED, disconnected from all power sources and retained as a static display item.

Conservation recommendations for operational hand tools:

This item should be retained in service and should be kept dry and under cover at all times. The item should be free of rust, burrs, cracks or other damage before usage. Any surface rust should be treated with an appropriate rust retardant. If required for operation, the item should be lubricated as necessary.

Hand tools which are no longer in an appropriate condition for safe usage should be retained on site as static display items.

Conservation recommendations for cranes, hoists and lifting equipment:

All cranes, hoists and lifting equipment should be inspected regularly to ensure the item is secure at the points of attachment, not subject to rust or deterioration and structurally sound. Should there be any question about the soundness of the item, it should not be used for lifting until inspected by qualified personnel.

If used for lifting, weights should never exceed the posted weight limit of the item.

Tagging

All items to be retained as a part of the S170 Register, including those items primarily with interpretive value, require tagging.

Tagging and inventory control have been problematic at this site over the last 20 years and it is recommended that all previous tagging systems be discarded.

New tags should be printed plastic tags (e.g. ID card style tags) neatly hole punched and secured to each item with plastic cable ties.¹²

Each tag should state:

- The words “ATP Heritage Item”
- The Item Name, as per S170 Register
- The database number or barcode, as per ATP Asset Management System
- The Item Location (e.g. Bay 1S, Column 6E)
- Any mechanical/electrical items not in service should be labelled DECOMMISSIONED

All previous tags should be removed.

In future, any tenants of Bays 1 and 2 should be required to tag their equipment similarly, to avoid any future confusion regarding the ownership of equipment.

It is recommended that an audit be carried out at least once every 2 years to monitor the collection.

December 2009 note: tagging of machinery has commenced.

¹² **December 2009 note** – a decision was subsequently made to use engraved aluminium tags attached with 316 grade stainless steel cable ties, following advice from the Heritage Branch, Department of Planning.

Recommendations

The completion of this review of the ATP's heritage assets brings the agency into compliance with S170 of the *Heritage Act*, following endorsement by the Heritage Council. It is recommended that:

- The S170 Register be formally endorsed by the ATP Board of Directors;
- The S170 Register database and this report be forwarded to the Heritage Council for formal consideration for endorsement;
- The recommendations regarding disposal, relocation of equipment stored outside and tagging be implemented in the short term.