



# **REDFERN WATERLOO HERITAGE TASKFORCE**

## **FINAL REPORT**

**CONTENTS**

EXECUTIVE SUMMARY .....3  
INTRODUCTION.....5  
REDFERN WATERLOO HERITAGE TASKFORCE .....5  
EVELEIGH STEERING COMMITTEE .....7  
ACHIEVEMENT OF TERMS OF REFERENCE .....8  
CONSULTATION.....13  
HERITAGE PROJECTS.....13  
    Eveleigh Railway Workshops Interpretation Plan.....13  
    Eveleigh Community Field Day.....14  
    Professor Lucy Taksa Book and Website Project .....14  
    Dictionary of Sydney .....15  
    Office of Rail Heritage .....15  
    The Performance Space and Nigel Helyer.....15  
    LES War Memorial Project .....16  
    Eora Journey.....16  
    Alexandria Park Community School D’harawal Calendar Cultural Heritage Program .....16  
    Aboriginal Connections with Eveleigh.....17  
    Australian Technology Park Projects.....17  
        Interpretation .....17  
        Conservation Management Plan and Heritage Projects Process .....18  
        Wrought Artworks Heritage Project.....18  
        Railway Arts Heritage Festival.....18  
CONCLUSION AND RECOMENDATIONS .....20

## EXECUTIVE SUMMARY

Heritage is an important part of the Redfern Waterloo area. The area is of great significance to the Aboriginal people, not only in a traditional sense, but also for its significance as the home of the modern Aboriginal social justice movement and the iconic organisations that were established in the process for restorative justice.

Redfern Waterloo is also the home of significant railway and industrial heritage of NSW, and Australia more broadly. The Eveleigh Railway Workshops contain some of the most important industrial heritage in NSW, being the centre of railway locomotive design, construction and maintenance for over 100 years.

The Redfern Waterloo heritage links are however not limited to these two important aspects of our past. There are many architectural and cultural facilities and institutions that make up a rich fabric of heritage in the area.

The RWHT commenced its deliberations at a time where there were many disparate and divergent views on what the future of heritage conservation in Redfern Waterloo entailed. These views are often the manifestation of long held frustrations by members of community and heritage based groups arising from issues that occurred in the past, in some circumstances over 10 years ago.

Many sections of the community were polarised on the matter of the future preservation and promotion of heritage in the Redfern Waterloo area and the Taskforce had an immediate challenge in establishing its credibility and veracity amongst the community's inherent scepticism towards this process. It was therefore not surprising that a significant portion of the first six to eight months of the life of the Taskforce was spent establishing its credibility and bone fides with the community.

This background context was also influential in the challenges that the RWHT faced in finalising its membership. It was regrettable that the process to appoint both the independent non-government heritage specialist, as well as the indigenous representatives took as much time as it did, however, the RWHT was able to work through these challenges and has been able to carry out its deliberations in a constructive manner. All members have made valuable and constructive contributions.

Whilst there remains a broad cross section of opinion on the future of the heritage in Redfern Waterloo, there has been good progress in creating an environment where different sectors of the community can express their views on this matter, and more collegiate outcomes can be considered as a consequence. This has been most evident in the development of the draft Interpretation Plan for the former Eveleigh Railways Workshops, and it is hoped that this work has set a platform upon which this engagement can continue.

The establishment of the Interpretation Plan for the former Eveleigh Rail Workshops (ERW) is key process that is central to the ongoing successful management of heritage in the Redfern Waterloo area. Whilst its focus is on the ERW and not the whole Redfern Waterloo area, the importance of this plan is critical to the successful alignment of the future development and urban renewal of the precinct and the preservation and promotion of the heritage and cultural values of this important collection of assets. This cannot be understated.

In addition to this outcome, the RWHT has overseen the development of a number of community based projects which have either been completed, or are ongoing. The identification and selection of these projects has been based on seeking expressions of interest from the community and stakeholder groups. This has in turn further strengthened community engagement in this process.

There remains however much work to be done on some broader heritage aspects for the Redfern Waterloo area. Perhaps the most disappointing aspect of the work to date has been the inability to gain access to much of the material that is held arising from previous research projects on the Eveleigh Workshops. There are many complex and firmly held intellectual property issues at hand in relation to this matter, and whilst negotiations are ongoing, there is much to be covered in order for an agreement to be reached on this matter.

There are also key activities relating to indigenous heritage and development and creating opportunities to unlock some of the lesser known architectural and public housing histories of the area. There are also further opportunities to be explored with connecting all of these heritage assets with tourism and education opportunities.

These matters notwithstanding, the RWHT has been broadly successful in meeting its objectives as outlined in its Terms of Reference. The challenge for the way forward is to maintain the momentum that has been established through this process and continue the work that has been initiated. To this end, this report recommends that a government and community based body be established to ensure that this collaboration continues into the future. There will be key issues of governance and access to funding to be resolved in the establishment of such a forum, however it is considered important that such a body be established for the foreseeable future to help maintain and continue the good work undertaken by the RWHT.

## **INTRODUCTION**

On 12 November 2009 the Premier, Minister for Redfern Waterloo approved the establishment of the Redfern Waterloo Heritage Taskforce (RWHT) with a specific set of Terms of Reference (attached at Appendix A). This report outlines the achievements of the RWHT and is submitted to the Premier, Minister for Redfern Waterloo in accordance with the Terms of Reference.

The work of the RWHT has progressed well to date, with key projects being initiated and community input being received. The work being undertaken by the Taskforce and the Eveleigh Steering Committee has, however been more comprehensive than originally anticipated. This is particularly the case with the preparation and finalisation of the Eveleigh Railway Workshops Interpretation Plan.

## **REDFERN WATERLOO HERITAGE TASKFORCE**

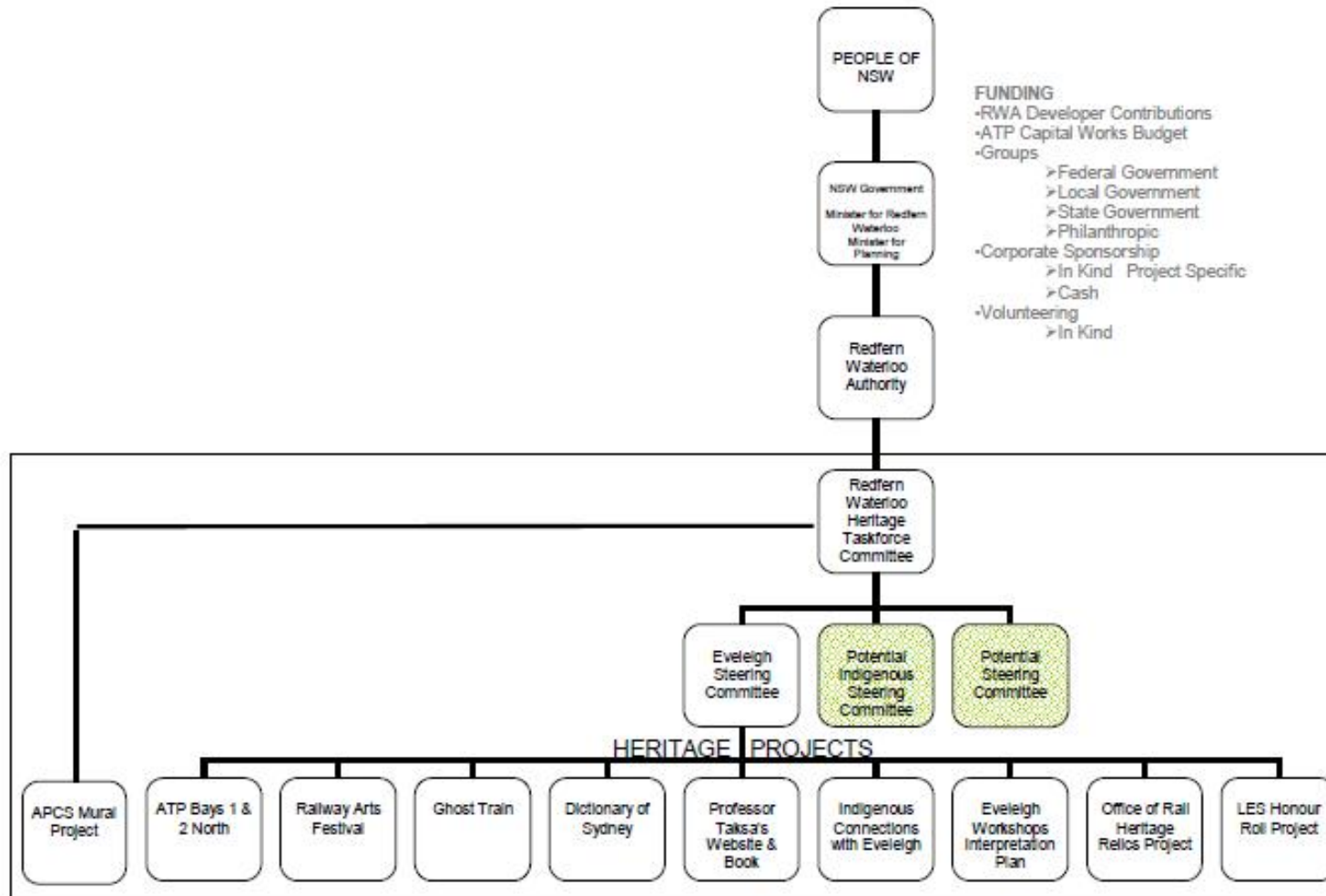
THE RWHT was formed with a permanent membership consisting of State and Local Government and community representatives. Government representatives include the Redfern Waterloo Authority (RWA) - Chair, RailCorp – Office of Rail Heritage, Tourism NSW, Heritage Branch (Department of Planning), Housing NSW and the Council of the City of Sydney. Community representatives include the Redfern Waterloo Chamber of Commerce, REDWatch, two representatives of the Indigenous community, and an Independent Heritage Specialist.

The RWHT held its first meeting on 9 December 2009 and has since met six times. To achieve a broad and comprehensive treatment of the area's diverse heritage values, the RWHT adopted a project based public participation process via a public call for Expressions of Interest to conduct a Heritage Project. The RWHT has considered a wide range of suitable Heritage Projects that seek to achieve enhanced public understanding of the history of the area and its significance to residents, workers and visitors. These projects are documented in detail below.

Early meetings of the RWHT received community representations in relation to the significant public interest in the former Eveleigh Railway Workshops precinct. As a result the RWHT endorsed the appointment of an independent heritage specialist to the RWHT, together with the establishment of an Eveleigh Steering Committee to examine the possibilities for the preservation and promotion of heritage at the former Eveleigh Railway Workshops. A significant part of this process has been the development of an Interpretation Plan for the former Eveleigh Railway Workshops.

The structure of the RWHT is illustrated in Figure 1.

# Redfern Waterloo Heritage Taskforce



## **EVELEIGH STEERING COMMITTEE**

The first meeting of people interested in participating in the Eveleigh Steering Committee (ESC) was held on May 12, 2010 and discussed the purpose and function of an Eveleigh Steering Committee as well as drafting basic Terms of Reference (ToR) (copy included at Appendix B). ESC meetings were open to all interested people and Mr Guido Gouvenuer (Wrought Artworks) was unanimously elected as the spokesperson for the ESC. At the request of the ESC, RWA CEO and RWHT Chair, Mr Roy Wakelin King chaired the ESC meetings. A total of six meetings of the ESC were held and they were attended by a broad range of interested parties.

## **ACHIEVEMENT OF TERMS OF REFERENCE**

The following outlines how the RWHT has achieved its objectives as outlined in its Terms of Reference:

### **TOR 1 – Identify opportunities for appropriate and sustainable conservation, adaptive re-use, revitalisation and interpretation of cultural, natural and archaeological heritage in the Redfern Waterloo Area in both the short and long term.**

Through its call for expressions of interest from the community for heritage based projects, the RWHT has identified a range of activities and opportunities for the conservation, preservation and interpretation of heritage in the Redfern Waterloo area. Furthermore, the RWHT has initiated a number of activities, such as the Indigenous Connections project, that will build on these initiatives and strengthen the opportunities for the conservation of heritage in the area.

The work of the RWHT in instigating and overseeing the development of the Eveleigh Railway Workshops (ERW) Interpretation Plan has been instrumental in identifying key opportunities for the preservation, conservation and promotion of this important heritage asset.

### **TOR 2 – Identify opportunities to increase community awareness, understanding, appreciation and enjoyment of the existing heritage and stimulate greater community initiative and participation in efforts to conserve it**

The RWHT has considered a range of diverse opportunities to increase community awareness of the heritage values of the Redfern Waterloo area. The RWHT has engaged with the City of Sydney's Eora Journey project and has agreed to share key ideas and opportunities with this project group, particularly in relation to the work that the RWHT has initiated on Indigenous Connections with Eveleigh.

The RWHT has also, through its membership with Tourism NSW initiated discussions on the opportunities for the promotion of heritage in the Redfern Waterloo area. There remain significant opportunities in this regard, particularly in collaboration with the ongoing work of the ERW Heritage Interpretation Plan and the future development of indigenous cultural tourism in the area. The organising process for the Eveleigh Community Field Day involved contacting many former Eveleigh workers to stimulate greater community initiative and participation.

The RWHT is also currently investigating the establishment a Heritage Arts Festival for the ERW area. This concept is a key method of engaging with the broader and local community in relation to heritage in the area. The festival will involve film, art, and interactive heritage displays that will help bring to life the historical significance of the area.



### **TOR 3 – Develop and foster links, synergies and networks between stakeholders including all levels of government, community groups, heritage experts, operators, volunteers and enthusiasts**

The RWHT has been actively engaged in developing relationships between key stakeholders, community groups and other organisations, including heritage operators to promote the significance of the heritage in the Redfern Waterloo area. Through its work with the main taskforce and also the active engagement at the Eveleigh Steering Committee the RWHT has facilitated and enabled effective dialogue and exploration of key opportunities with many stakeholders.

It is important to note that at the commencement of its work, the RWHT was faced with many divergent and disparate views on the future of heritage in the Redfern Waterloo area. These views are strongly held and are often expressed in a forthright manner. Through the work of the RWHT and specifically in the projects which it has overseen, the nature of this engagement has evolved into a more constructive and functional process.

There remains much work to be done in relation to this, as there is a need to ensure the ongoing fostering of trust and communication, however there is now an effective platform from which this process can continue.

The RWHT is of the view that this engagement is one of the most critical aspects of any future work in this area of heritage for Redfern Waterloo. There are clear roles for all parties to play in this regard including government and non-government organisations, community groups and heritage organisations.

Management at Australian Technology Park Precinct Management Ltd (ATPPML), the future owners of North Eveleigh and RailCorp, being the custodians of significant heritage assets in the Eveleigh area are central to the future success of this process. There needs to be an active role on behalf of these organisations to engage with the community in the future development and management of the heritage at the ERW. The implementation of the ERW Interpretation Plan will be critical in guiding this process, however the RWHT is of the firm view that whilst there has been progress in relation to the engagement of the community by these organisations, there needs to be an ongoing proactive culture within these organisations to ensure the future success of this process.

### **TOR 4 – Examine opportunities for heritage skills training and employment associated with heritage land uses in the area**

The RWHT has identified that there needs to be further work done in this area. The RWHT acknowledges that there are important heritage and community groups that actively maintain heritage based skills in the area, specifically 3801 Ltd, Wrought Artworks and the Powerhouse Museum however there has been concern expressed by these groups of the diminishing nature of these skills.

ATPPML has advised of its intention to establish a heritage volunteer workforce which will help with this process, however there needs to be further work done in relation to fostering the development of these skills in a more coordinated fashion.

**TOR 5 – Determine sustainable and appropriate treatment and techniques for interpretation of heritage in the Redfern Waterloo Area in association with tourism, educational and recreational uses in the wider Sydney and NSW region.**

Increasing community awareness of the heritage values of the Redfern Waterloo area was a key consideration of the RWHT. The former railway workshops at Eveleigh, are an intrinsic part of the Redfern Waterloo area, and became a key industrial centre of NSW demonstrating a rich industrial, labour and multicultural history. This provides significant tourism, educational, cultural and recreational opportunities along side the current revitalisation of the Redfern Waterloo area. This rich history of Eveleigh is the inspiration for a number of valuable volunteer and interest groups that have worked to conserve and maintain key aspects of railway heritage from this site.

As described above, the RWHT is currently investigating the establishment a Heritage Arts Festival for the ERW area. It is envisaged that the festival will involve film, art, and interactive heritage displays that will help bring to life the historical significance of the area and enhance community participation, understanding and enjoyment of the heritage significance in the area.

In collaboration with Tourism NSW the RWHT has initiated discussions on the opportunities for the promotion of heritage in the Redfern Waterloo area. There remain significant opportunities in this regard, particularly in collaboration with the ongoing work of the ERW Heritage Interpretation Plan and the future development of indigenous cultural tourism in the area. To this end the RWHT has also engaged with the City of Sydney's Eora Journey project and has agreed to share key ideas and opportunities with this project group, particularly in relation to the work that the RWHT has initiated on Indigenous Connections with Eveleigh. This project is also considered a likely to be a significant theme in the development of the Heritage Arts festival and an important method of engaging with the broader and local community in relation to heritage in the area.

**TOR 6 – Enhance wider public understanding of the history of the area and its significance to residents, workers and visitors and the fostering of active links with the community.**

A principle activity of the RWHT has been to actively engage with key stakeholders, community groups and other organisations, including heritage operators to promote the significance of the heritage in the Redfern Waterloo area. Through its work with the Taskforce committee and also the active engagement at the Eveleigh Steering Committee the RWHT has facilitated and enabled effective dialogue and exploration of key opportunities with many stakeholders.

Active links established with the Alexandria Park Community School, City of Sydney Eora Journey project, Dictionary of Sydney, Performance Space and Australian Technology Park, have enhanced the understanding of the history of the area and its significance to residents, workers and visitors.

**TOR 7 – Consider the existing planning and heritage controls and approved and proposed plans for revitalisation in the Redfern Waterloo area and identify opportunities for synergies between sites, organisations, community groups in the development of opportunities to increase appreciation and enjoyment of the existing heritage and public participation in conservation and interpretation. This will include consideration of the values and opportunities associated with both fixed and movable heritage as well as the intangible social and cultural associations.**

Exploration and documentation of intangible social and cultural associations with the Eveleigh Railway Workshops were the focus of the Eveleigh Community Field Day, which provided an opportunity for opportunity for public participation in conservation and the development of the Interpretation Plan. Former workers and their families as well as railway volunteers and interested members of the local community were given the opportunity to appreciate and enjoy of the heritage values of the ERW.

The draft Interpretation Plan also includes a range of opportunities, such as the proposed Railway Arts Festival that will develop opportunities for synergies between railway heritage sites across NSW, as well as amongst organisations and community groups responsible for railway heritage. The specific intent of these activities and interpretive concept is to enhance and increase appreciation and enjoyment of heritage values.

Further, the draft Interpretation Plan identifies a range of interpretative concepts relevant to the extensive moveable heritage collections associated with the former ERW. The draft Conservation Management Plan currently in preparation for the Australian Technology Park addresses comprehensively the fixed and moveable heritage of the ATP site. The draft CMP will be the subject of public exhibition, following the finalisation of the Interpretation plan, to ensure that the two documents are consistent and provide for compatible heritage conservation outcomes.

**TOR 8 – Identify in consultation with the Heritage Office and experts, any additional areas of heritage and cultural significance in the Redfern Waterloo Area not already listed and/or adequately protected.**

To date no additional areas or sites additional areas of heritage and cultural significance in the Redfern Waterloo Area not already listed and/or adequately protected.

However, in consultation with the Heritage Office and the City of Sydney, the RWA has produced a map that illustrates the State Heritage Register listings and the City of Sydney Heritage Items and Conservation areas, within the RWA operational area. A copy of this map has been uploaded the RWA website and is included at Appendix C

**TOR 9 – Identify funding opportunities for the conduct of Heritage Projects identified and prioritised in accordance with the Terms of Reference for planning, conservation, interpretation, appreciation, reuse and education.**

THE RWHT gave significant consideration to the funding of Heritage Projects with the following funding being provided:

- RWA contribution of \$4,500 to the continuation of the APCS project during 2010;

- ATPPML and RWA shared contribution towards the cost of the development of the Interpretation Plan (approximately \$120,000), including conduct of the Eveleigh Community Field Day (approximately \$5,000);
- Office of Rail Heritage contribution of in kind works towards the identification and location of items in the RailCorp heritage store with provenance to or association with the Eveleigh Railway Workshops (approximately \$10,000);
- ATPPML grant of \$1,500 towards the restoration of the Large Erecting Shop Honour Roll.

The following grant applications were also made:

- RWA and APCS staff collaborated to prepare an application to the 'Artists in Schools' funding program administered by Arts NSW for 2011 funding of \$8,000, which was submitted prior to the closing date on August 31 2010, but regrettably was not successful.
- RWA and ATPPML have collaborated to prepare an application for grant funding to the NSW Heritage Office for (dollar for dollar) funding up to \$52,500 towards the installation of sympathetically designed automatic glass entry doors to the eastern elevation and to seal other vent openings in the building fabric to prohibit pigeon access and improve climate variability. This will enhance the conditions under which the moveable heritage collection is stored and reduce cleaning and maintenance requirements.
- The RWA and ATPPML have collaborated with Wrought Artworks to prepare an application for grant funding to the NSW Heritage Office. The application seeks (dollar for dollar) funding up to \$29,000 towards the Wrought Artworks Heritage Project that involves the restoration and recommissioning of the 'Covmac – Horizontal Upset Forging Machine' together with recommissioning of a gas furnace to power the Covmac. The NSW Heritage Office will announce successful grant recipients in March 2011.

The Interpretation Plan is intended to provide a framework for future developers of the Australian Technology Park and North Eveleigh sites, and in particular for the allocation of developer contributions from associated development of these sites towards the conservation and enhancement of Eveleigh's heritage significance.

It is intended that funding for implementation of the Interpretation plan, when finalised, will be sought through developer contributions, capital works programs, and ATPPML (for ATP matters) and heritage grants where appropriate.

## **CONSULTATION**

As part of the activities of the RWHT and ESC, extensive consultation with the local community and railway heritage fraternity has occurred (a full list of people approached individually to participate in the activities of the RWHT is included at Appendix D). This consultation has significantly enhanced the public relations between RWA, ATPPML and the many railway heritage interests. It is with the maintenance of these improved relationships in mind, that the following recommendations for future directions are made.

## **HERITAGE PROJECTS**

On 27 January 2010, the RWA, on behalf of the RWHT, called for expressions of interest for community based heritage projects. Submissions closed on 25 February 2010 for consideration by the RWHT. However, at a later meeting of the RWHT, the ongoing acceptance of Heritage Project nominations was endorsed, and additional Heritage Project submissions were considered by the RWHT until 12 October 2010.

A range of projects were received as a consequence of this process and their scope and implementation status follows.

### **Eveleigh Railway Workshops Interpretation Plan**

The RWA appointed 3D Projects in association with Artscape and Only Human to prepare the Interpretation Plan for the former Eveleigh Railway Workshops. The former Eveleigh Railway Workshops are listed on the State Heritage Register and include the Locomotive Workshops at ATP, the CarriageWorks at North Eveleigh and other key railway facilities that were established in latter part of the 19<sup>th</sup> Century.

The former railway workshops at Eveleigh, are an intrinsic part of the Redfern Waterloo area, and became a key industrial centre of NSW demonstrating a rich industrial, labour and multicultural history. This provides significant tourism, educational, cultural and recreational opportunities along side the current revitalisation of the Redfern Waterloo area. This rich history of Eveleigh is the inspiration for a number of valuable volunteer and interest groups that have worked to conserve and maintain key aspects of railway heritage from this site.

The Interpretation Plan determines sustainable and appropriate techniques for interpretation of heritage across the whole of the former Railway Workshops precinct in association with railway heritage, tourism, educational and recreational uses in the Redfern Waterloo area as well as the wider Sydney and NSW region. The Interpretation Plan seeks to engage communities in heritage management ensuring they are informed, consulted and given the opportunity to participate. The Interpretation Plan also examines and seeks to reinforce links with rail heritage places and sites across NSW and Australia. The draft Interpretation Plan will be exhibited for public comment between 23 February and 16 March 2011.

## **Eveleigh Community Field Day**

There are a range of different audiences that currently experience the site including workers, theatre and market goers, local residents, general and railway tourists and school groups. Each of these audience groups have different interpretation needs based on their different understanding of the history and heritage of the site or their desire to merely experience the site. Many former workers, their colleagues and people from the wider community remember vividly the functioning Railway Workshops.

An important element of the community consultation program associated with the preparation of the Interpretation Plan was the conduct of a Field Day for both ex workers and the public, which was held at the Australian Technology Park on October 30, 2010.

A range of story telling activities were facilitated on the day, for the identification of significant social history themes and ideas. A professional photographer was present and the stories considered the best by all parties present were the subject of video recording for future use in interpretation on the site. Aspects of all of the material collected on the day may also provide sources for the future collection of audiovisual material, associated with the GhosTrain project (detailed below).

Also accompanying the activities on the day were a live painting demonstration by Heritage Artist Jane Bennet, the live performance of railway songs by the Australian Bush Music Club and a Blacksmithing demonstration by Wrought Artworks. All participants made active and positive contributions throughout the day, and the event was very well received.

## **Professor Lucy Taksa Book and Website Project**

The proposed Heritage Project submitted by Professor Taksa seeks funding of approximately \$25,000 to subsidise the publication of a book provisionally entitled: *'The heart of a transport system: landscape, identity and citizenship and the Eveleigh railway workshops'*.

In return for this financial support Professor Taksa has undertaken to provide to the State government a comprehensive website that has already been developed by the author and contains digitised archival historical data, short overview essays on the workshops, its people (male and female, Indigenous, non-indigenous and migrant) and their families (including biographical profiles, oral history extracts and personal recollections, and family reconstructions), the place and its surrounding community, industrial relations, its technology and occupations. All content is accompanied by photographs and the website also includes a virtual fly-through of the Eveleigh precinct. The website has been designed to be linked to a database of nearly 28,000 Eveleigh employees to enable genealogical research.

The website and book draw on existing research both documentary and oral history undertaken by Professor Taksa and dovetails with a range of outputs on Eveleigh's history and heritage which Professor Taksa produced with funding from Australian Research Council grants. The RWA continues with good faith negotiations in relation to this proposal with Professor Taksa.

## Dictionary of Sydney

The Dictionary of Sydney is a groundbreaking digital history project developed by the City of Sydney Council, the University of Sydney and supported by Sydney's leading cultural institutions and 39 local councils. The project aims to present the history of all of metropolitan Sydney - from the earliest human habitation to the present - online, and through other mediums. The first window into the Dictionary of Sydney's digital repository of information is the website ([www.dictionaryofsydney.org](http://www.dictionaryofsydney.org)).

The RWA has collaborated with the Dictionary of Sydney in order to select a suitable project for use in the website. Early discussions have revealed the potential to use excerpts from the 'Trains of Treasure' exhibition. This exhibition included 26 panels created in 1985 as part of the preparations for the Bicentennial and updated to 30 panels in 2005 during the 150th Anniversary of Railways in Australia. The exhibition panels concentrate on the lives and culture of railway workers and the part they played in the ongoing history of the railways in Australia. The Dictionary of Sydney is pursuing the copyright for these excerpts for use on the website.

## Office of Rail Heritage

The Office of Rail Heritage (ORH) has located a range of objects from the Office of Rail Heritage's collection that are associated with Eveleigh, including the following Honour Rolls:

- Eveleigh, 1914-1918 (2.8m x 1.7m wooden board);
- Eveleigh, 1939-1945, Korea (2.7m x 1.5m wooden board).

Further research and conservation of these items is now required, together with the identification of a suitable location for the display of these items at ATP. This next stage of the ORH heritage Project is proposed to be incorporated into the draft Interpretation Plan.

## The Performance Space and Nigel Helyer

*GhosTrain* is a project in three parts. All three stages of *GhosTrain* are designed to recognise the importance of the soundscape that once characterised the site and endeavour to re-instate specific elements of its acoustic ecology and the memories contained within oral history.

*The Heritage Project relates to the third part of the GhosTrain project.... It is the artist's intention to develop permanently installed location-sensitive audio tour that will operate on 3G phones. This will provide an open access platform that can be developed and modified over time."*

The Performance Space is currently discussing the potential for financial support for the Project from the Australia Council. Due to existing programme commitments at The Performance Space and the strong demand for the artist Nigel Helyer's work the delivery of this project will occur during 2011.

Nigel Helyer participated in the Eveleigh Field Day that brought together stakeholders including ex-workers to meet Nigel and identify opportunities for future story collecting and studio recording sessions.

### **LES War Memorial Project**

Community group, Friends of Eveleigh (FoE) have identified a need for restoration of the Honour Roll located on the eastern façade of the Large Erecting Shed. The marble surface and its timber surrounds require clean up and restoration work. Volunteers have indicated that they are willing to undertake this work.

Following concerted efforts to obtain a single page specification of the work to be undertaken from interested volunteers, the RWHT has now initiated the preparation of a scope of works by a qualified heritage consultant as a means of progressing towards the restoration by volunteers of this Honour Roll. This specification must be approved by RailCorp, prior to the work commencing.

### **Eora Journey**

The City of Sydney is developing a number of strategies around the concept of 'Eora Journey', which will reveal stories of places of Indigenous importance across the LGA and provide a visual and experiential Indigenous history of the land and harbour. An initial project involves cultural mapping of sites of significance across the LGA.

The City Historian, Ms Lisa Murray presented a briefing on the cultural mapping project to the RWHT as part of the formal public consultation process, and the RWA is maintaining a watching brief to ensure that any opportunities to develop understanding and communication of local Indigenous heritage are collaboratively explored.

### **Alexandria Park Community School D'harawal Calendar Cultural Heritage Program**

The Alexandria Park Community School (APCS) D'harawal Calendar cultural heritage program is run by Aboriginal Resource Development Officer at the School Ms Kathryn Greenwood and the Art Teacher Mr Ray James. RWA and APCS staff have collaborated to prepare a brief for the continuation of the APCS D'harawal Calendar cultural heritage program. The Cultural Heritage features of the Calendar project include:

- Provision of an authentic representation of D'harawal-Eora science;
- Demonstration of local Aboriginal knowledge in context;
- Inclusion of Aboriginal perspectives around weather, climate and ecology in K - 12 teaching curriculum;



- Provision of a teaching resource for partner schools, local community and teacher training authorities;
- Provision of opportunities for the integration of other learning streams (bush food gardens, language programs, comparative cosmology).

Funding for the artist supporting and supervising the student's work on this project ran out in the first week of March 2010 and both student's and teachers were keen to keep up the momentum and enthusiasm. The RWA provided funding of \$4,500 towards the continuation of this project during 2010 and RWA and APCS staff have since collaborated to submit an application to the 2011 'Artists in Schools' funding program administered by Arts NSW. Unfortunately the application was not successful. The cost to continue the program for two years is estimated at \$9,000 and alternative sources of grant funding are under investigation.

### **Aboriginal Connections with Eveleigh**

Documentation of Aboriginal connections with the Eveleigh site will form a good link between the two main themes of the RWHT activities - Eveleigh history and Indigenous history. The conduct of historical research on this theme would also ensure that the GhosTrain project and Interpretation Plan can adequately and appropriately address this significant theme. A brief for the conduct of this research is currently being prepared by the RWA and quotes will be invited from qualified historians. It is anticipated that the project will be complete by May 2011.

### **Australian Technology Park Projects**

#### **Interpretation**

ATPPML has identified Bays 1 and 2 of the Locomotive Workshop as a principal space for interpretation of heritage significance of the site and will install infrastructure including paths, lights and services etc to facilitate the use of the northern portion of this space for heritage interpretation. In tandem with this project RWA and ATPPML have collaborated to prepare an application for grant funding to the NSW Heritage Office. The application seeks dollar for dollar funding up to \$52,500 towards the installation of sympathetically designed automatic glass entry doors to the eastern elevation and to seal other vent openings in the building fabric to prohibit pigeon access and improve climate variability. This will enhance the conditions under which the moveable heritage collection is stored and reduce cleaning and maintenance requirements.

Bays 1 and 2 south are occupied by a heritage blacksmithing operation, Wrought Artworks. ATPPML and Wrought Artworks are working together to bring about a heritage blacksmithing demonstration that can be accessed as part of ATP events, for conferences, school groups etc. This opportunity to witness a demonstration of operating blacksmithing machines in the original environment will achieve enhanced public understanding of the history and

industrial revolution engineering technologies of the workshops. The extant blacksmithing machinery would also be used for commercial manufacture of parts for steam locomotive restoration (boiler stays) and other jobs requiring traditional blacksmithing skills.

### **Conservation Management Plan and Heritage Projects Process**

ATPPML have commissioned consultants Godden Mackay Logan to prepare a draft Conservation Management Plan (CMP) for the Australian Technology Park. The CMP is currently being finessed and will be publically exhibited shortly.

RWA and ATPPML are collaborating to develop an integrated process by which all heritage capital works projects can be the subject of public consultation and community engagement. This process will form part of the final CMP, and will ensure that all relevant local and railway heritage interests are kept informed about heritage capital works projects occurring on the ATP site. The draft heritage capital works process recommends that ATPPML continue to convene a community interest group, similar to the Eveleigh Steering Committee as part of the heritage capital works consultation process.

### **Wrought Artworks Heritage Project**

Wrought Artworks is a heritage blacksmithing operation that occupies a portion of Bays 1 and 2 of the Locomotive Workshops building at Australian Technology Park. The RWA and ATPPML have collaborated with Wrought Artworks to prepare an application for grant funding to the NSW Heritage Office. The application seeks dollar for dollar funding up to \$29,000 towards the Wrought Artworks Heritage Project that involves the restoration and recommissioning of the 'Covmac – Horizontal Upset Forging Machine' together with recommissioning of a gas furnace to power the Covmac. The NSW Heritage Office will announce successful grant recipients in March 2011.

### **Railway Arts Heritage Festival**

The Railway Arts Heritage Festival seeks to focus on the railway arts including music, songs, poems, yarns, visual and performing arts, gardens and films. The Railway Arts are considered a significant element of the cultural heritage of the site because the line between occupational or professional skills of railway workers and art was (and remains) very fine.

It is envisaged that the Railway Arts Festival would build upon the success of the Eveleigh Field Day and may include:

- Conduct of a 'Railway Film Festival' at the Australian Technology Park or CarriageWorks theatre over a weekend in late 2011, using the recent

York Railway Museums Railway Film Festival or French Railway Film Festival as a model;

- An exhibition of Railway visual artists such as Jane Bennett who are already painting contemporary railway scenes and a musical program from the Bush Music Club of railway songs and poems, together with Blacksmithing demonstrations;
- Conduct of guided tours of the Eveleigh Railway Workshops Precinct by former workers, volunteers and/or interested community groups;

The RWA is working together with the volunteer project team to better define the likely costs and organisational requirements and lead time required to organise and publicise the Festival.

## CONCLUSION AND RECOMENDATIONS

The RWHT has been broadly successful in meeting its objectives as outlined in its Terms of Reference. The challenge for the way forward is to maintain the momentum that has been established through this process and continue the work that has been initiated.

The preparation of the Interpretation Plan, including the conduct of the Field Day has been important in developing collaborative community relations and has made a significant step towards recognising the significance of the intangible social and cultural associations with the Eveleigh Railway Workshops. The direct involvement of Taskforce members, Eveleigh Steering Committee members, former workers and their families, railway volunteers and interested members of the local community has improved public participation in high quality conservation outcomes.

To this end, this report recommends that a government and community based body be established to ensure that this collaboration continues into the future. There will be key issues of governance and access to funding to be resolved in the establishment of such a forum, however it is considered important that such a body be established for the foreseeable future to help maintain and continue the good work undertaken by the RWHT.

In addition, the collaboration with ATPPML will be necessary to ensure that the positive community relations outcomes achieved in relation to heritage matters are capitalised upon, not only through community involvement in the Heritage Arts Festival, but also through an enhanced heritage capital works process.

In the longer term, to ensure that the heritage significance of the Redfern Waterloo area is appropriately recognised and communicated the RWA proposes to pursue the further development of connections with the relevant heritage projects conducted by the City of Sydney, particularly the Eora Journey project.

There are several tasks commenced by the RWHT that need to be completed. It is recommended that these be completed in the short term (by May 2011). They include:

- Indigenous Connections with Eveleigh Research Project for which quotes are currently being sought and completion is expected in early May 2011;
- Public exhibition and response to submissions on the draft Interpretation Plan, which is expected to be completed March 2011;
- Negotiations with Professor Taksa in relation to the book/website project;
- Railway Arts Festival which is expected to be held late 2011;
- LES Honour Roll project which is hoped to be completed before Anzac Day 2011;
- Review of the RWA contribution plan to include relevant heritage interpretation works as part of the public domain works proposed to be funded by developer contributions;
- Identification of further funding opportunities for the continuation of the APCS D'harawal Calendar cultural heritage program.