



# TRANSPORT for NSW REDFERN STATION Proposed New Southern Concourse

## Community Options

Presented by Community Groups  
**ReConnect Redfern** and **REDWatch**  
6 August 2019

# What is ReConnect Redfern?



Little Eveleigh Street  
Residents



The Watertower  
Residents

## Bodies we are consulting:



Lord Mayor  
/Councillors




**CARRIAGEWORKS**



MP for Newtown



# Agenda

- Priorities and Issues to be addressed
  - Background and context
  - TfNSW Options vs Issues
  - Community Option 5 Journey
  - TfNSW Response
  - Discussion
  - Way forward
- 
- Several white lines of varying lengths and angles are positioned in the bottom right corner of the slide, creating a modern, abstract graphic element.

# Priorities

- Support the improvement of Redfern Station accessibility (DASPT)
  - Improve pedestrian rail commuter flow and reduce congestion
  - Enhance public pedestrian and bicycle connectivity to key local destinations, incl:
    - Australian Technology Park (South Eveleigh)
    - Redfern business district and transport hubs
    - Proposed North Eveleigh technology and innovation centre
    - Carriageworks
    - Sydney University
  - Protect and promote heritage and local culture
  - Retain local residential amenity
- 
- A series of white diagonal lines of varying lengths and thicknesses, located in the bottom right corner of the slide, creating a modern, abstract graphic element.

# Major Issues to be addressed

- Connectivity between North and South Eveleigh
  - Accessibility to platforms 1 to 10
  - Accessibility to platforms 11 and 12
  - Impact on Little Eveleigh Street
  - Impact on Marian Street
- 
- A series of white lines of varying lengths and orientations are positioned in the bottom right corner of the slide, creating a modern, abstract graphic element.

# BACKGROUND AND CONTEXT





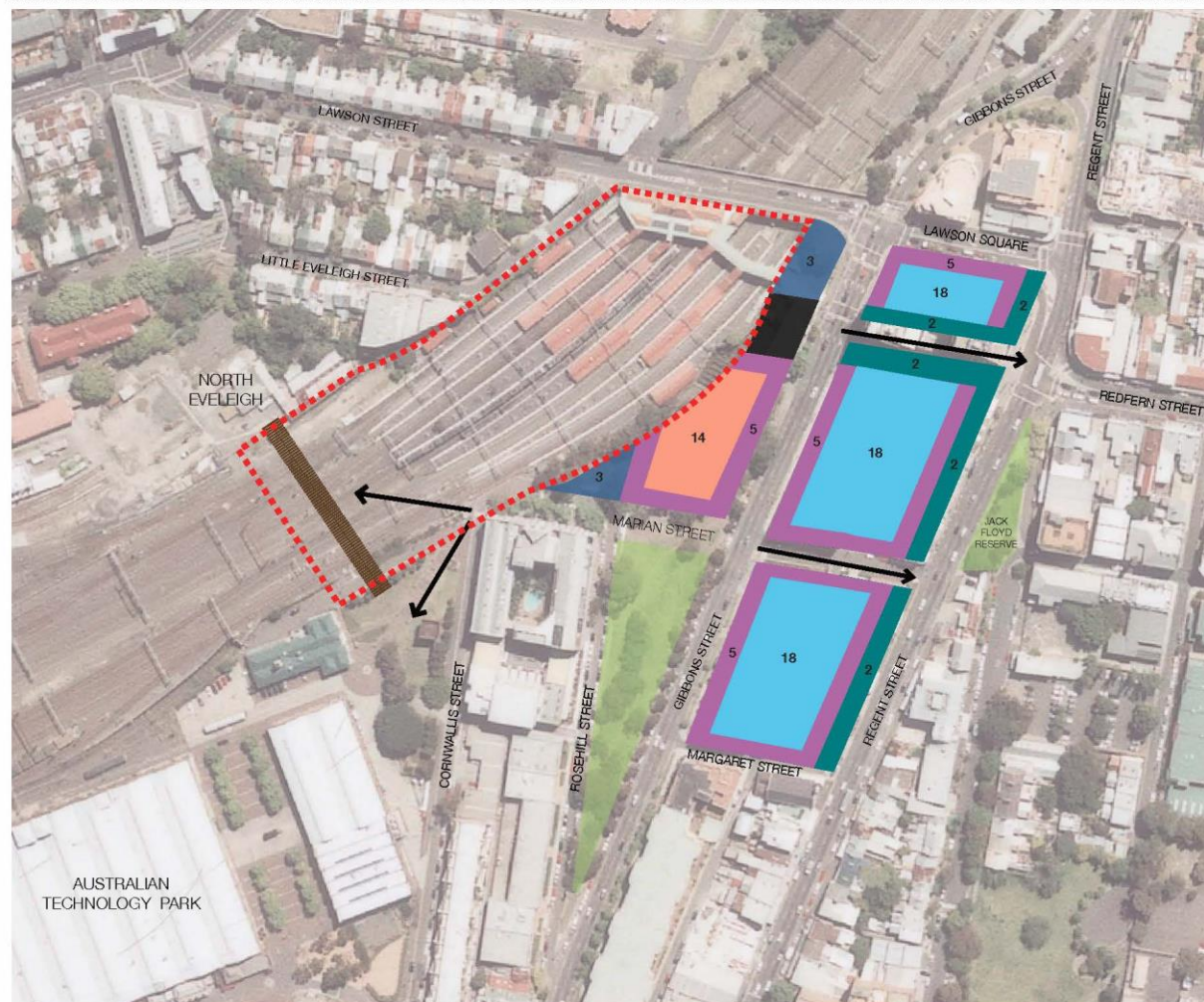
# Background and Context





# Background and Context

## 4.10 REDFERN RAILWAY STATION, GIBBONS & REGENTS ST's HEIGHT & FLOOR SPACE RATIO



NOT TO  
SCALE



REDFERN STATION UPGRADE & CONCOURSE  
CURRENTLY BEING INVESTIGATED



CIVIC SPACE



2 STOREY HEIGHT MAX.



3 STOREY HEIGHT MAX.



5 STOREY HEIGHT MAX.



14 STOREY HEIGHT MAX.



18 STOREY HEIGHT MAX.



PUBLIC OPEN SPACE



POTENTIAL PEDESTRIAN &  
CYCLE BRIDGE



VIEW CORRIDORS

**PUBLIC OPEN SPACE:**  
Refer to Indicative Location of Publicly Accessible  
Open Space diagram.

**HERITAGE ITEM:**  
• Redfern Station Booking Office

**MAXIMUM FLOOR SPACE RATIO**  
7:1



# Background and Context

3.



Example of possible landscape treatment for Little Eveleigh Park at North Eveleigh and pedestrian and cycle connection between north and south Redfern. This could be achieved by the installation of a bridge or an access through Redfern Railway Station.



Example of Little Eveleigh Park (North Eveleigh) landscape treatment - Planting



Example of Little Eveleigh Park (North Eveleigh) landscape treatment - Retaining walls



# Background and Context





# Background and Context



## Eastern Plaza

The Eastern plaza is the main public area of the development, and is surrounded by heritage and new high-rise landmark buildings. The plaza provides stair and accessible ramp access to a pedestrian bridge linking to Redfern Station and surrounding areas. It will function as an entry plaza shared by vehicles and pedestrians.



PRECEDENTS

### Key Components:

- Bollards and trees to contain vehicles within this zone.
- Green terraces with steps provide strong visual entrance and places to sit and lounge.
- Series 1 in 14 ramps on north-east corner that connects Wilson St and the Redfern Station pedestrian bridge.
- Banding in contrasting concrete that distinguish the plaza as a special area.
- Seating and gathering areas for commercial employees.
- Areas for small events for the local area.
- Planting to ameliorate adverse wind conditions.



**TDS+JAAA**  
 Turi Design Studio + Japco Arquitectos  
 P.O. Box 418, Toronto, ON M5T 2B5, Canada  
 Phone: (416) 597-3461, Fax: (416) 597-3462  
 Email: tds@tds-jaaa.com, jaaa@tds-jaaa.com

Project:  
 North Eveleigh

Drawing Title:  
 EASTERN PLAZA  
 Date:  
 16.04.08  
 Scale:  
 DAL8  
 A

# Background and Context

## Eveleigh Heritage Walk: Project application

The RWA has prepared an Environmental Assessment for the construction of the Eveleigh Heritage Walk, a pedestrian and cycle bridge traversing the railway corridor, near Redfern Railway Station, connecting the Australian Technology Park and North Eveleigh and suburbs beyond.



An artist's impression of the new Eveleigh Heritage Walk, a pedestrian and cycle bridge which will connect the Australian Technology Park and North Eveleigh.



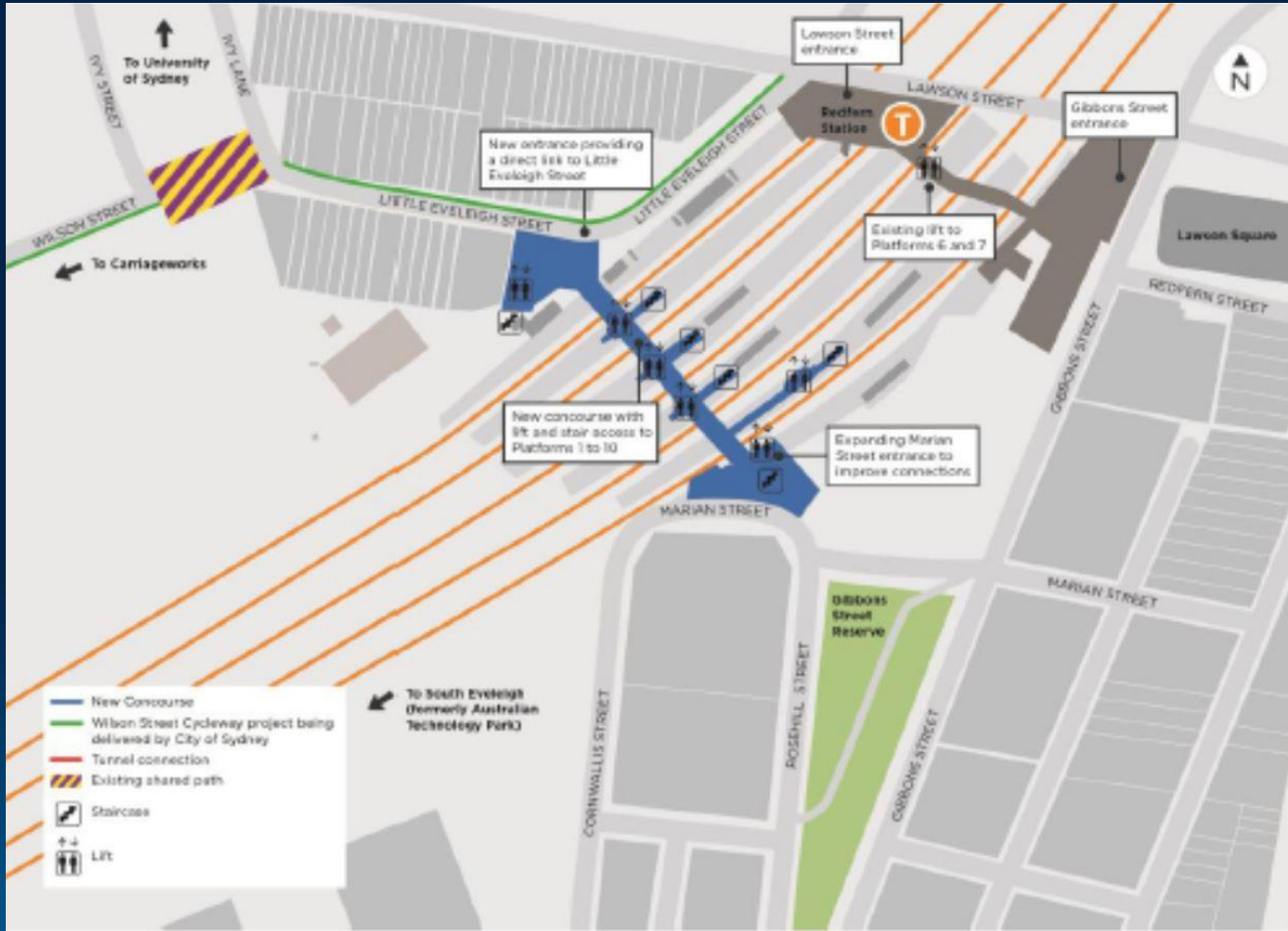
# Background and Context



# TfNSW OPTIONS vs ISSUES

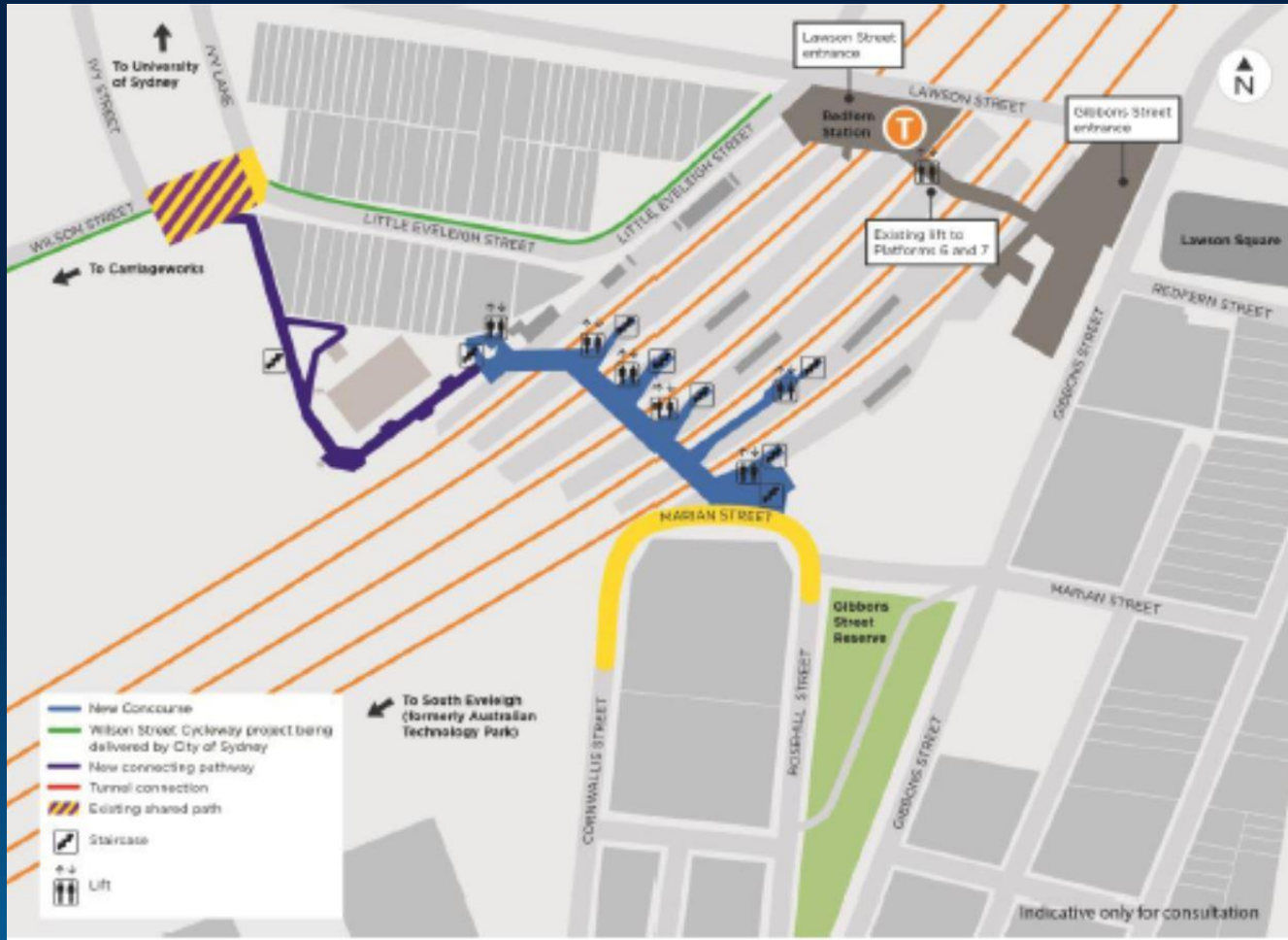


# TfNSW Option 1: Little Eveleigh Street Connection



- ✗ Connectivity between North and South Eveleigh
- ✓ Accessibility to platforms 1 to 10
- ✗ Accessibility to platforms 11 and 12
- ✗ Impact on Little Eveleigh Street
- ✗ Impact on Marian Street

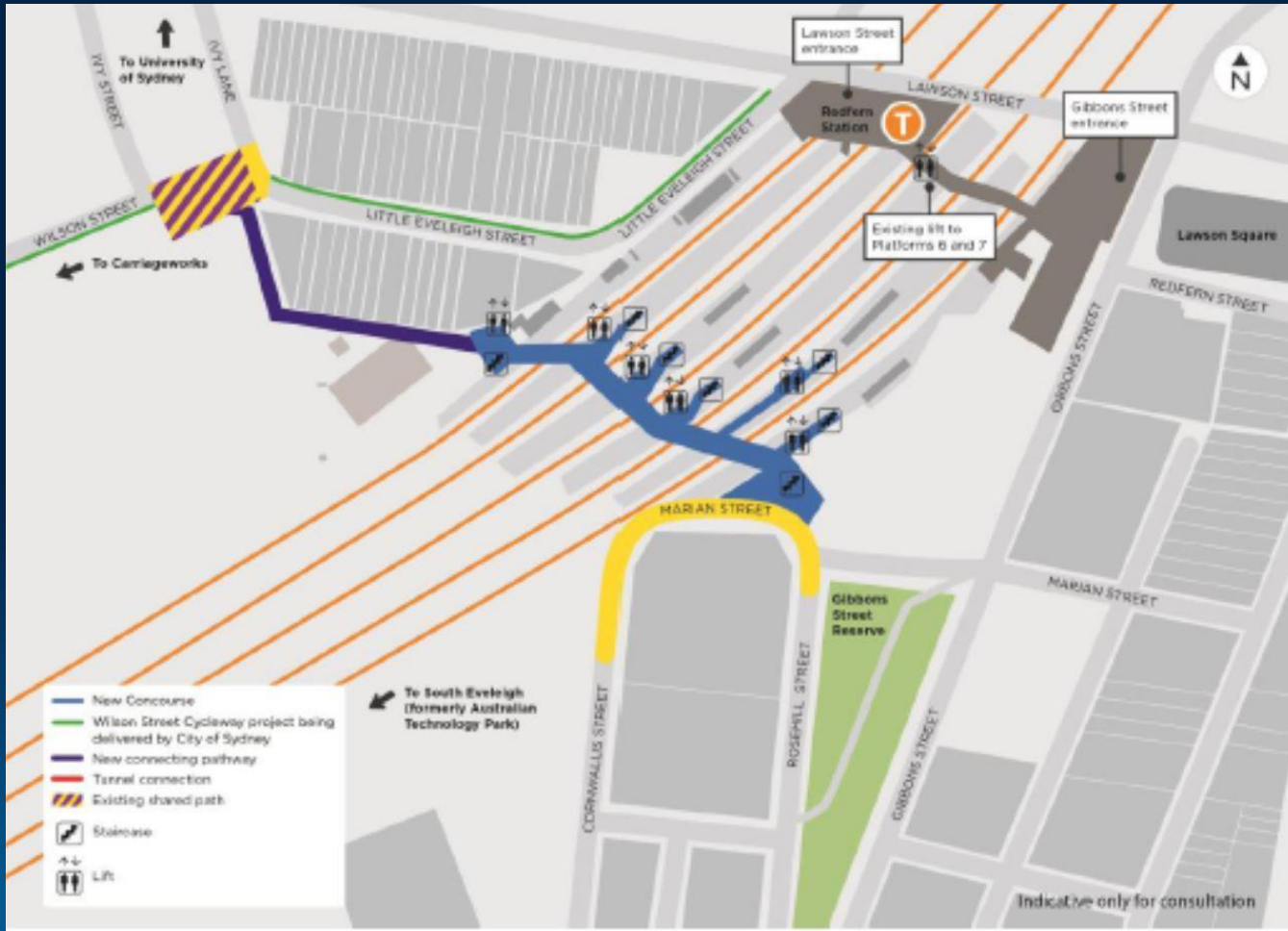
# TfNSW Option 2: Ground Level Pathway (Wilson St Connection)



- ✗ Connectivity between North and South Eveleigh
- ✓ Accessibility to platforms 1 to 10
- ✗ Accessibility to platforms 11 and 12
- ✓ Impact on Little Eveleigh Street
- ✗ Impact on Marian Street

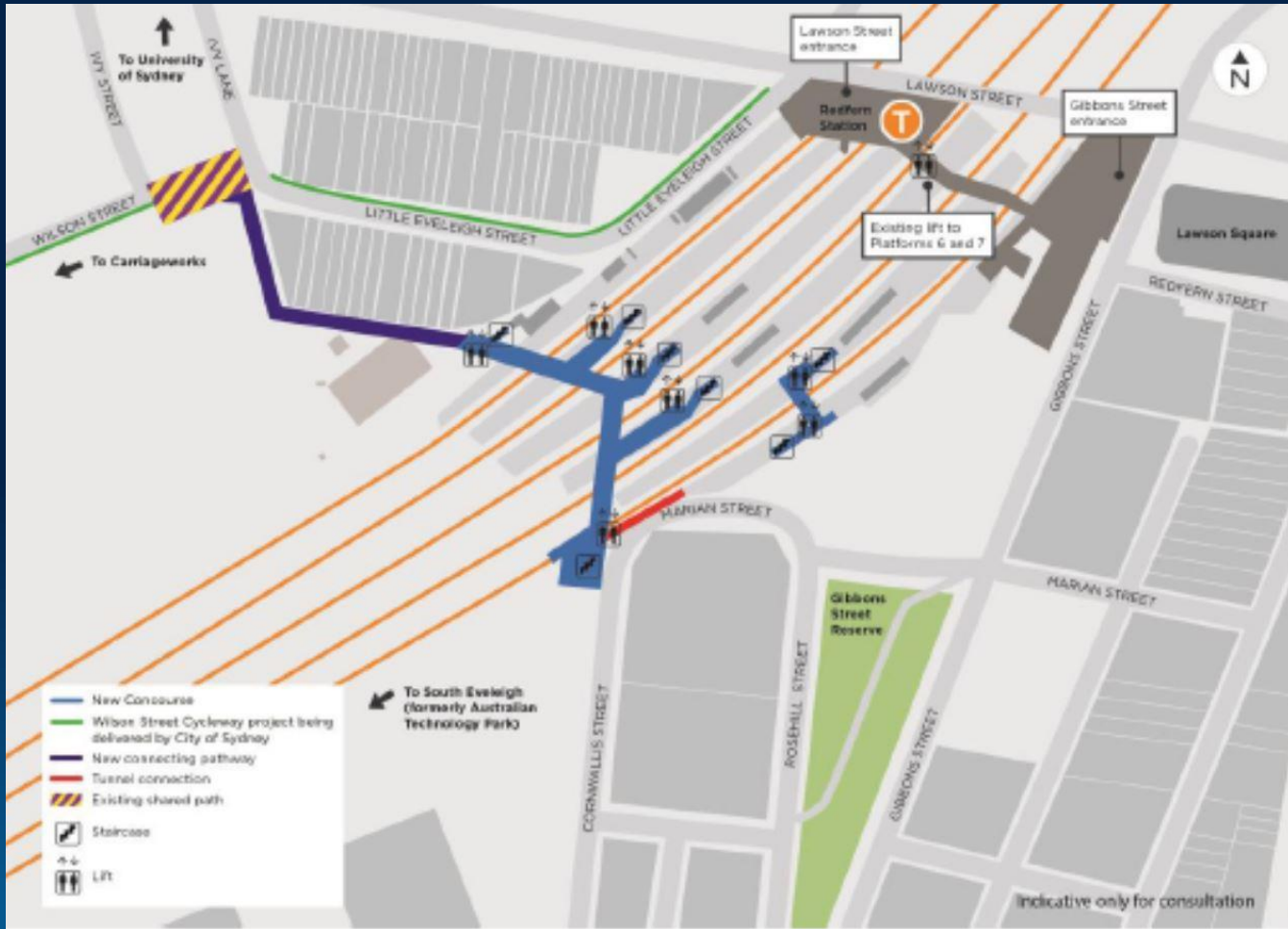


# TfNSW Option 3: Aerial Walkway (Wilson St Connection)



- ✗ Connectivity between North and South Eveleigh
- ✓ Accessibility to platforms 1 to 10
- ✗ Accessibility to platforms 11 and 12
- ✗ Impact on Little Eveleigh Street
- ✗ Impact on Marian Street

# TfNSW Option 4: South Eveleigh to Wilson St Connection



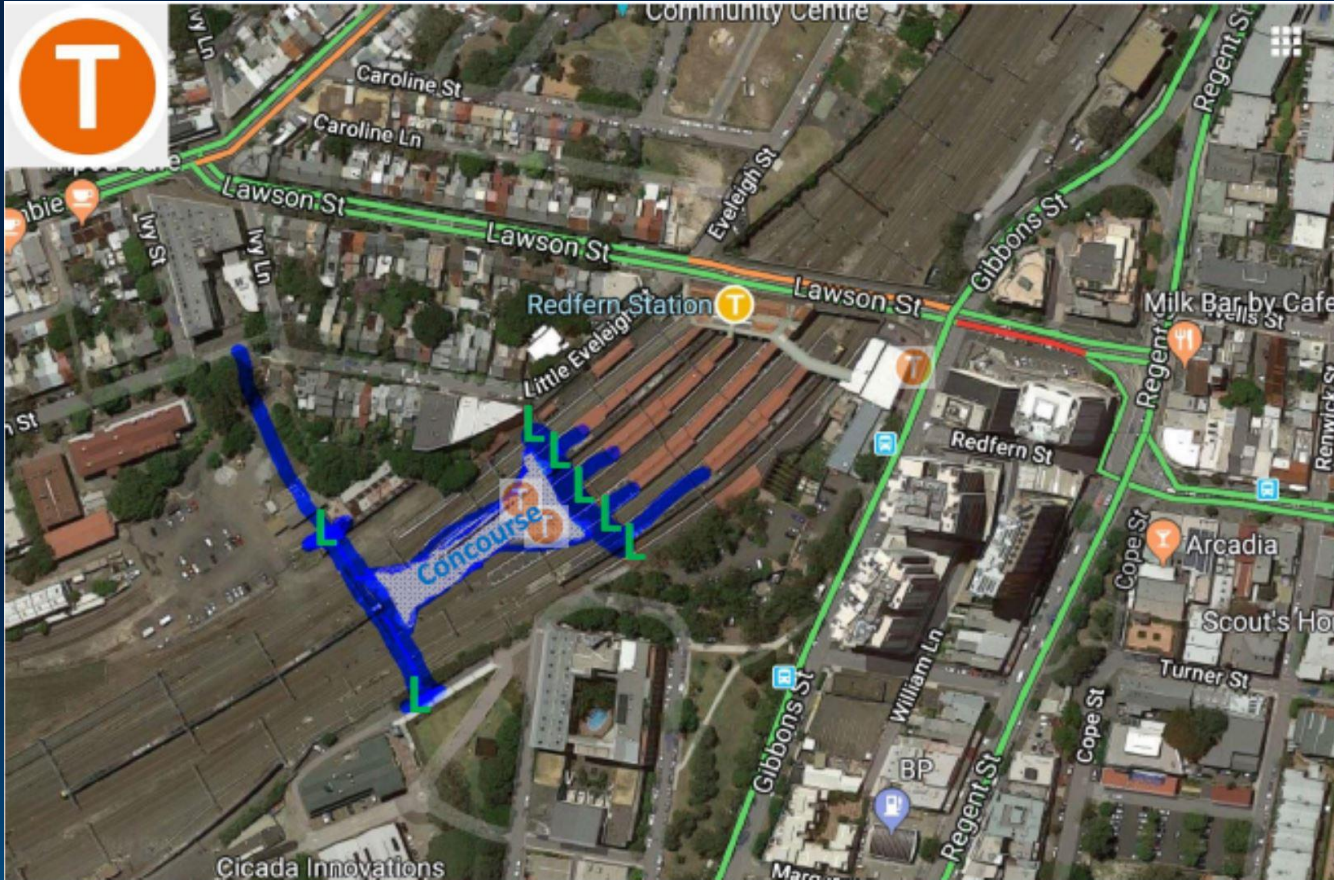
- ✓ Connectivity between North and South Eveleigh
- ✗ Accessibility to platforms 1 to 10
- ✗ Accessibility to platforms 11 and 12
- ✗ Impact on Little Eveleigh Street
- ✓ Impact on Marian Street

# COMMUNITY OPTION 5 JOURNEY





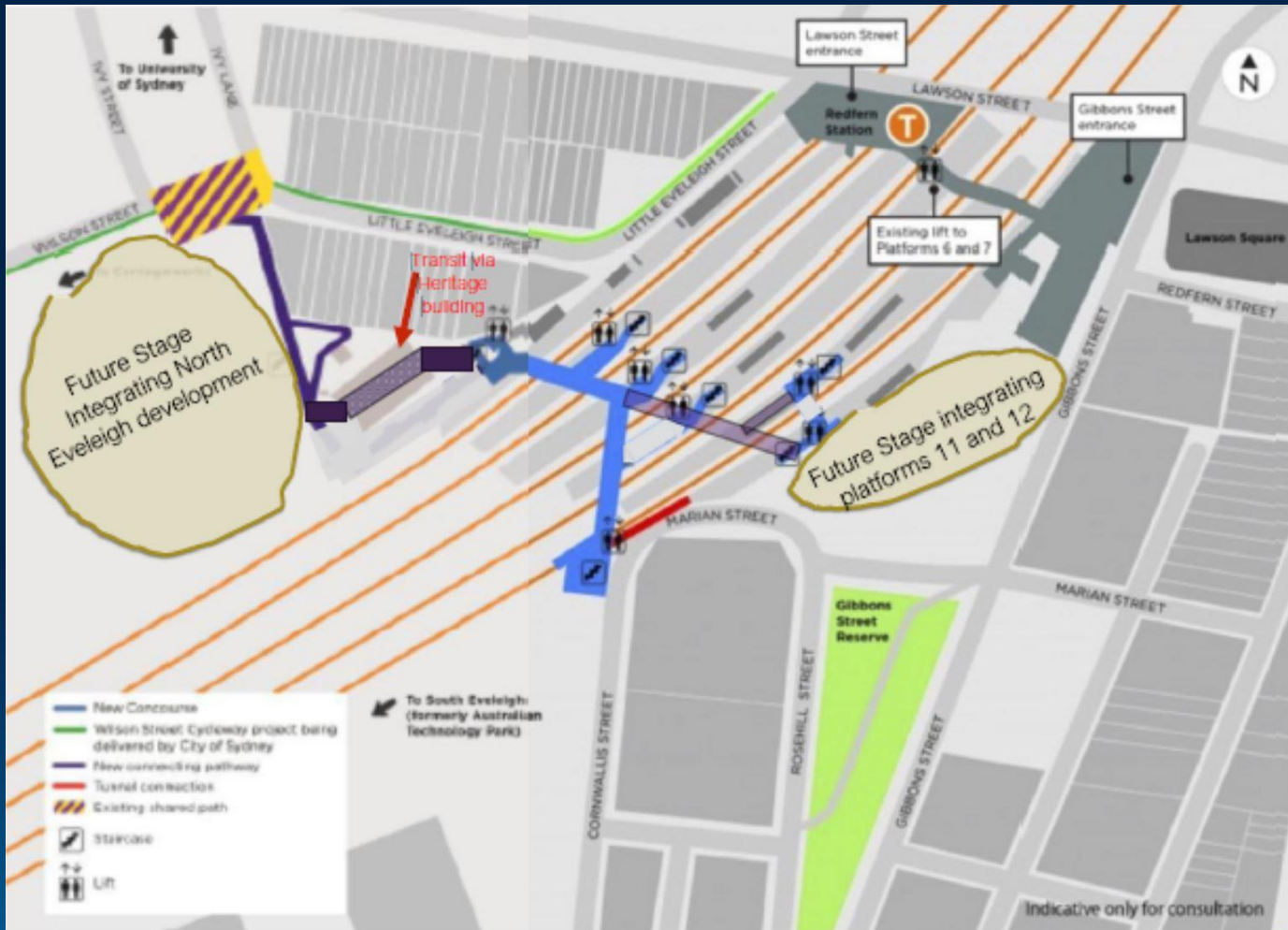
# Journey – “H” Design



- ✓ Connectivity between North and South Eveleigh
- ✓ Accessibility to platforms 1 to 10
- ✗ Accessibility to platforms 11 and 12
- ✓ Impact on Little Eveleigh Street
- ✓ Impact on Marian Street

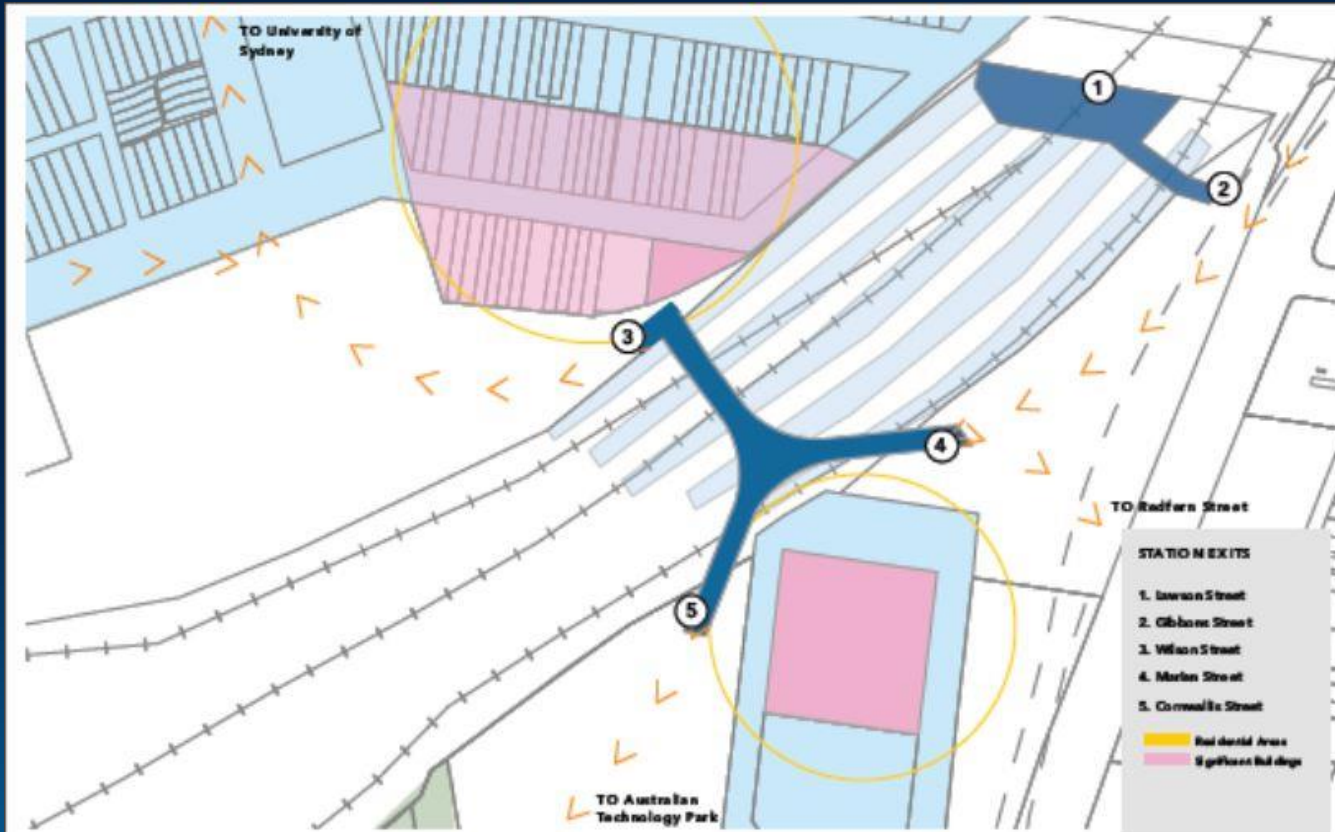


# Journey - Hybrid Option 2 + 4 (modified)



- ✓ Connectivity between North and South Eveleigh
- ✓ Accessibility to platforms 1 to 10
- ✗ Accessibility to platforms 11 and 12
- ✓ Impact on Little Eveleigh Street
- ✓ Impact on Marian Street

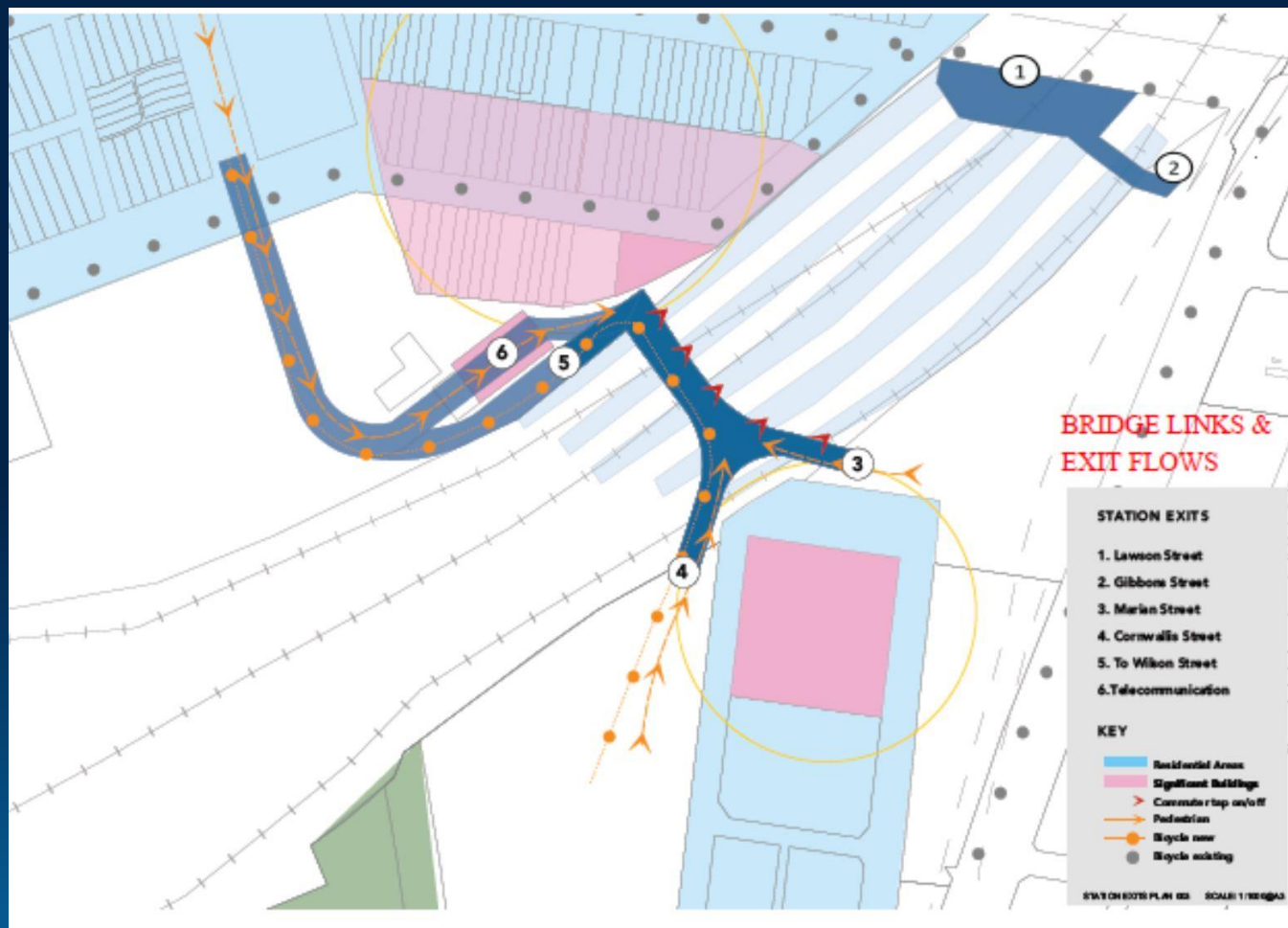
(Architects Cracknell & Loneragan v1)



- ✓ Connectivity between North and South Eveleigh
- ✓ Accessibility to platforms 1 to 10
- ✗ Accessibility to platforms 11 and 12
- ✓ Impact on Little Eveleigh Street
- ✓ Impact on Marian Street

# Journey

(Architects Cracknell & Loneragan v2)



- ✓ Connectivity between North and South Eveleigh
- ✓ Accessibility to platforms 1 to 10
- ✗ Accessibility to platforms 11 and 12
- ✓ Impact on Little Eveleigh Street
- ? Impact on Marian Street

TfNSW RESPONSE

DISCUSSION

WAY FORWARD





# THANK YOU

Reconnect Redfern and Redwatch Community Groups  
August 2019

