

ABOUT THE PROJECT

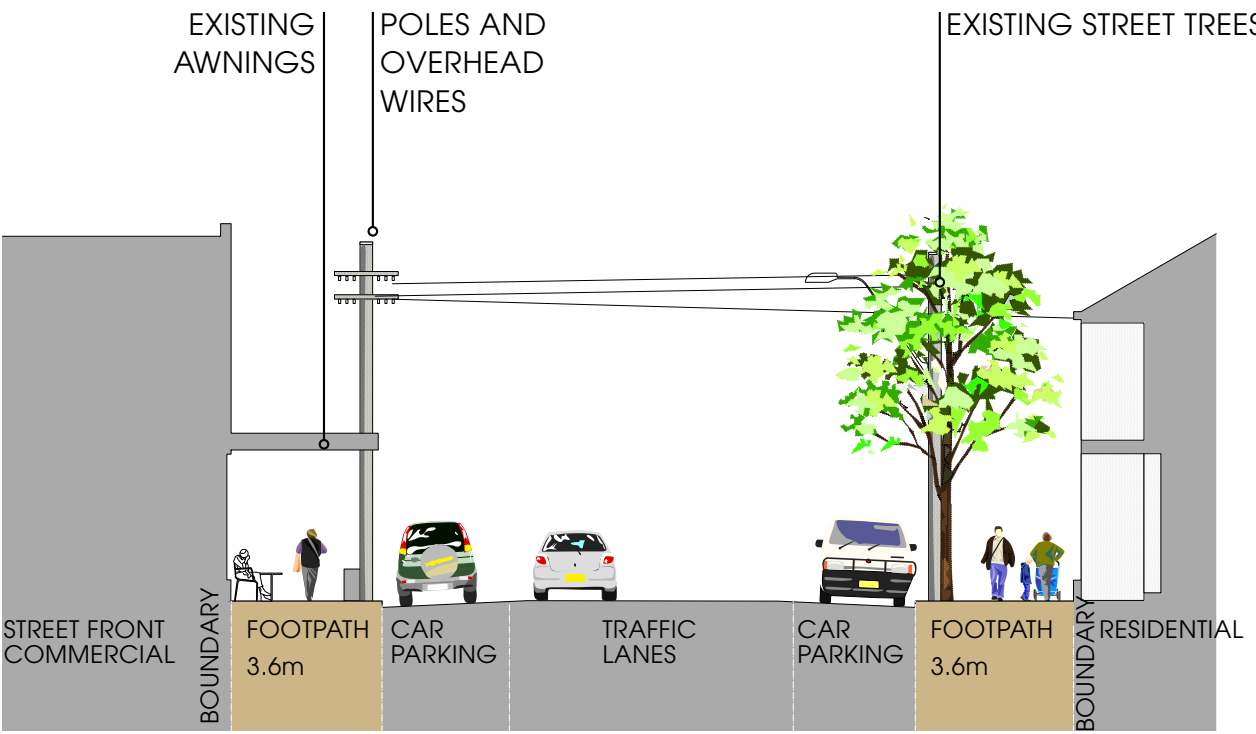
Abercrombie Street between Shepherd and Lawson Streets is the activity centre of Darlington village. It supports cafes, a small retail strip, small businesses, private dwellings and a park.

Abercrombie Street and Lawson Street also form a major walking route between Redfern Station and Sydney University.

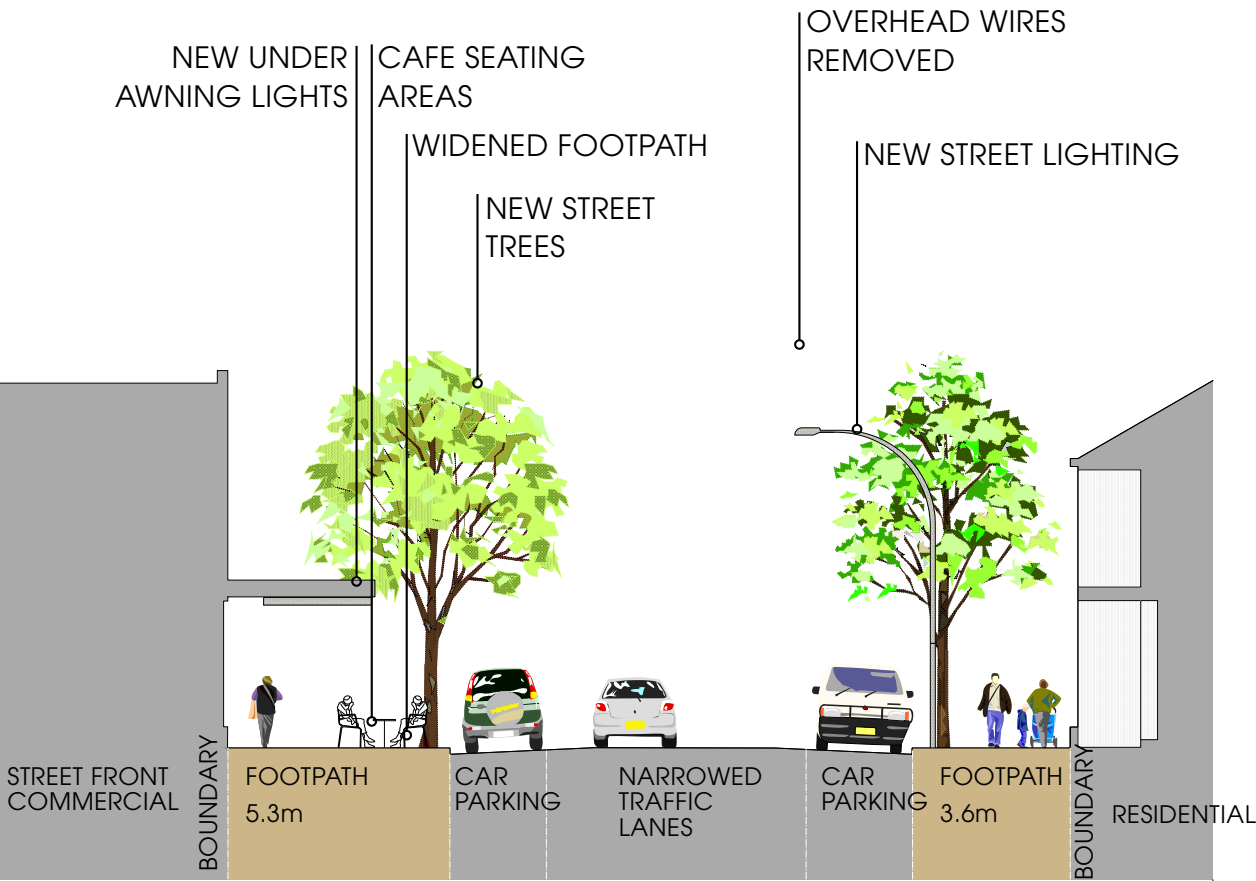
Last year we asked for your comments on a concept design to improve the southern side of Abercrombie Street between Ivy and Shephed Streets. In response to community feedback, the project has been expanded to include works at Ivy Street and the northern side of Abercrombie Street between Ivy and Shepherd Streets.

PROJECT AIMS

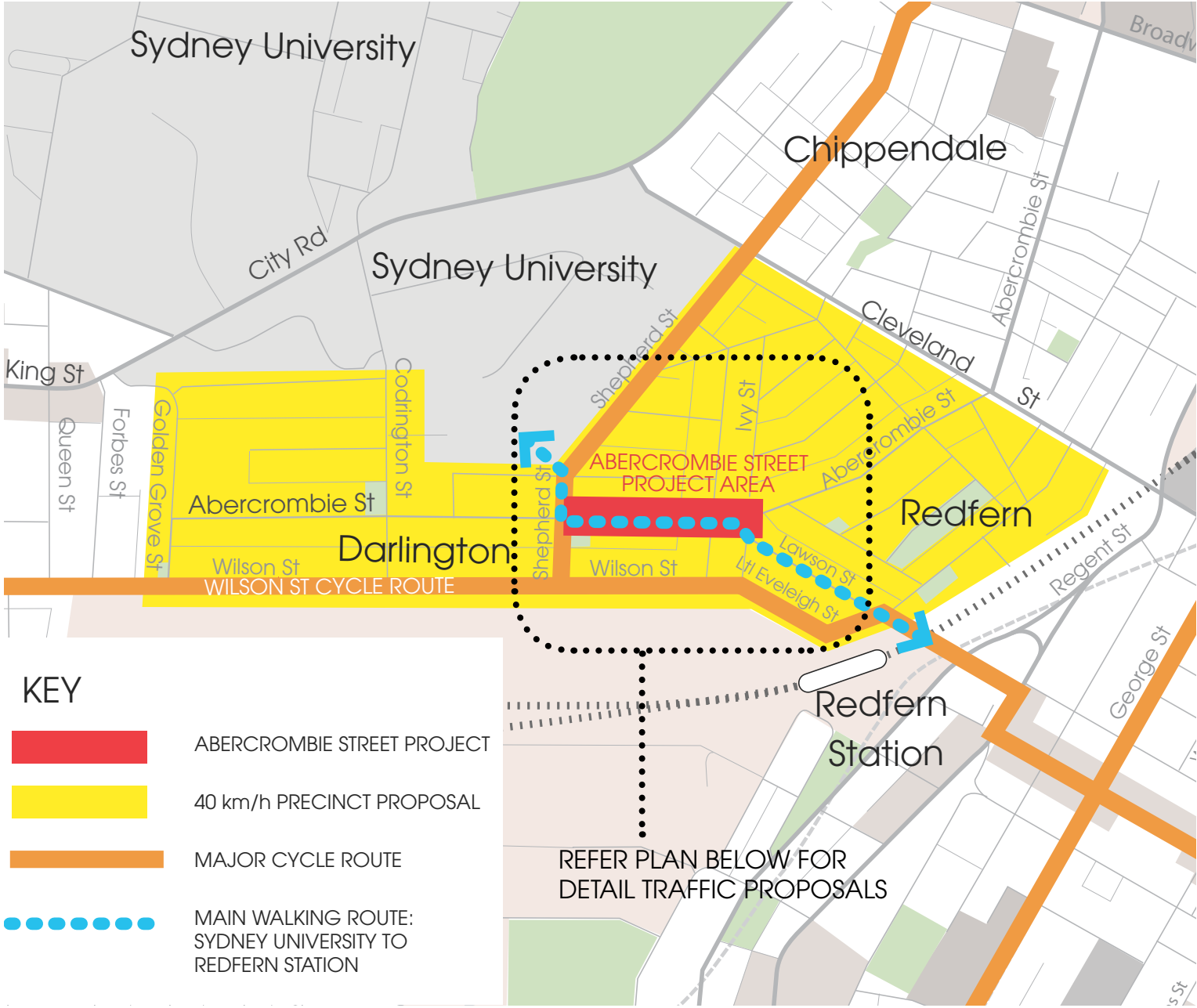
- Further enhance the area as a village precinct and promote the existing village centre.
- Green the area with new trees and planting.
- Remove the clutter of overhead wires on both sides of the street.
- Improve pedestrian safety in support of the street’s role as a major pedestrian route.
- Achieve a slow speed environment to improve safety by changing traffic conditions.
- Retain existing parking.



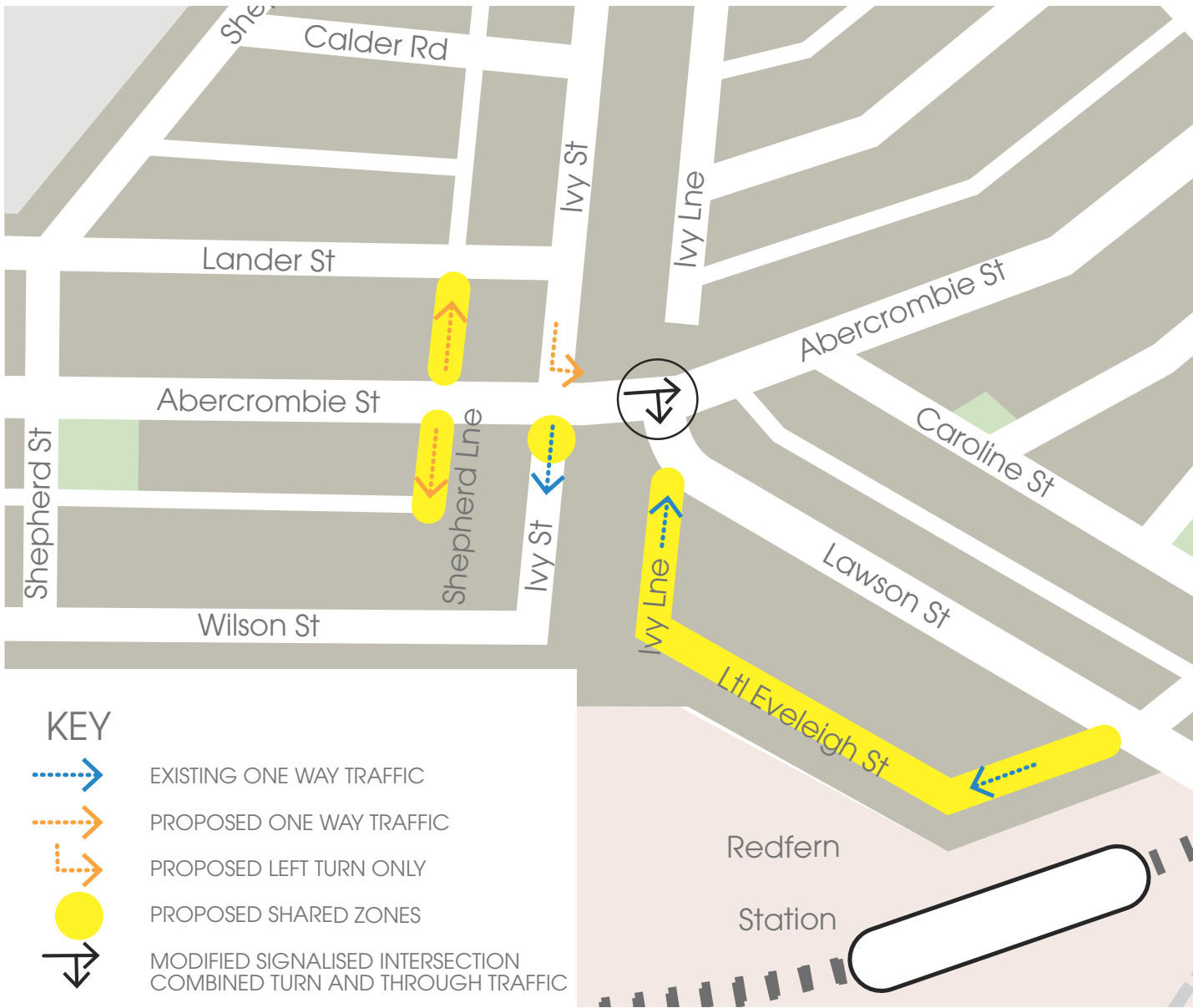
SECTION A: EXISTING



SECTION A: PROPOSED



TRAFFIC PRECINCT PLAN



TRAFFIC PROPOSALS PLAN

(Detail plan of the Traffic Precinct Plan).

The following traffic changes are proposed as shown above.

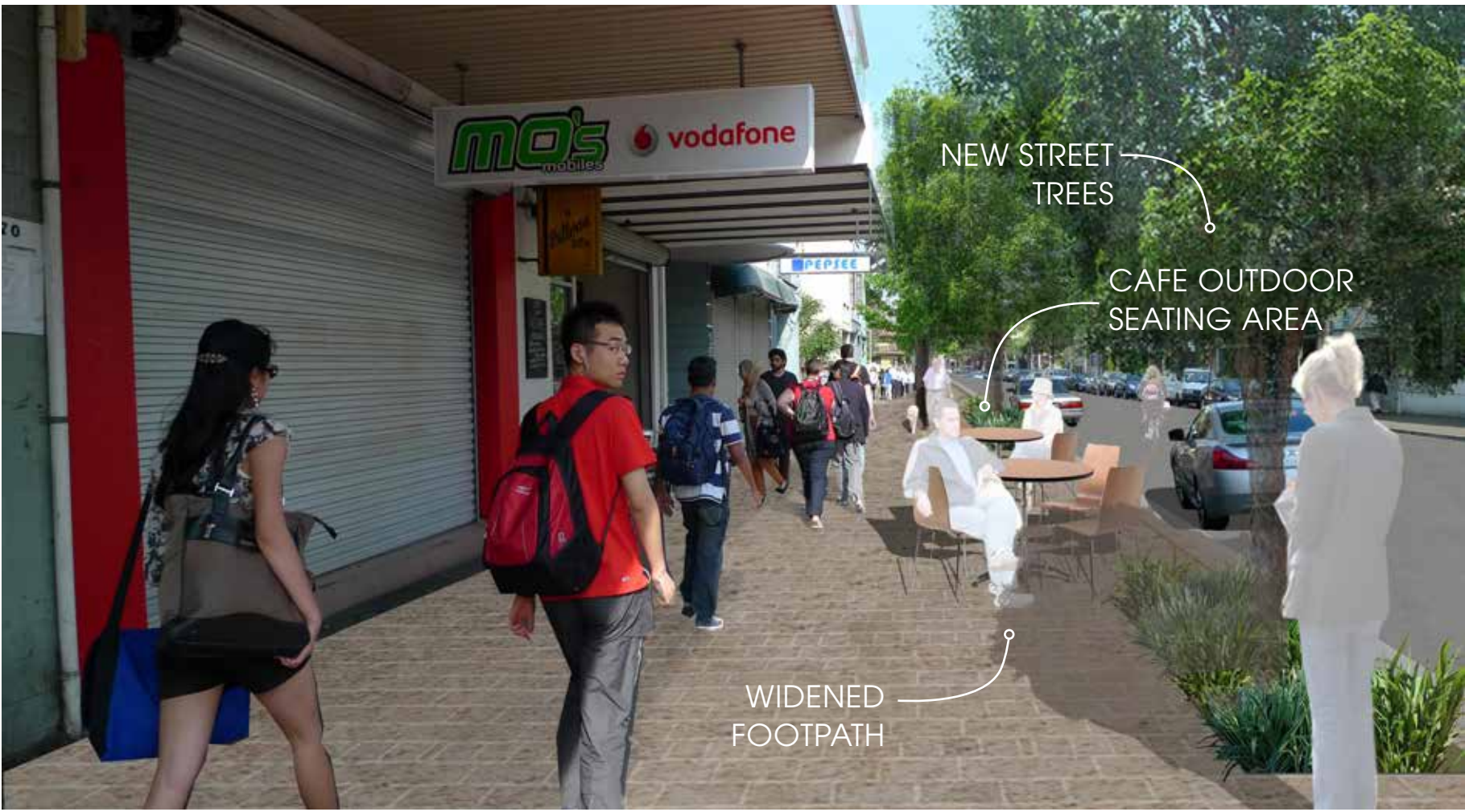
- Shared Zones at intersections along main pedestrian route.
- One way traffic at Shepherd Lane.
- Left turn at Ivy Street.

These are subject to RMS approval.



VIEW ONE

Illustration of footpath widening and streetscape enhancements in front of Charles Kernan Reserve.



VIEW TWO

Illustration of footpath widening and streetscape enhancements.



VIEW THREE

Illustration of Lawson Street intersection upgrade

THE STREETScape UPGRADE WILL INCLUDE THE IMPLEMENTATION OF A NEW 40KM/HR SPEED LIMIT IN THE DARLINGTON VILLAGE.

THE 40KM/HR SPEED ZONE WILL INCLUDE THIS SECTION OF ABERCROMBIE STREET AS THE MAIN STREET IN THE VILLAGE. (THIS IS SUBJECT TO RMS APPROVAL).

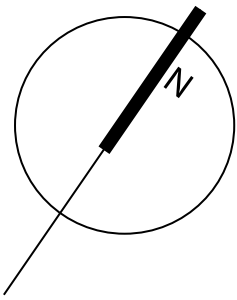
FOOTPATH UPGRADE ON NORTHERN SIDE OF ABERCROMBIE STREET INCLUDING NEW BRICK PAVEMENT AND STREET LIGHTING

EXISTING POWER LINES WILL BE PLACED UNDERGROUND ON BOTH SIDES OF THE STREET BETWEEN SHEPHERD STREET AND LAWSON STREET. POWER WILL BE SUPPLIED TO ADJACENT BUILDINGS FROM ELECTRICAL PILLARS ALONG THE FOOTPATH. THE EXACT LOCATIONS OF THE PILLARS WILL BE DETERMINED AS THE DESIGN IS DEVELOPED.

SHARED ZONES IN SHEPHERD LANE (NORTH AND SOUTH) DEFINED BY RAISED PAVEMENT AT ABERCROMBIE STREET INTERSECTION. (SUBJECT TO RMS APPROVAL).



PLAN SCALE 1:250



LEGEND



NEW STREET TREE: BRUSH BOX
Lophostemon confertus
EXISTING STREET TREE
EXISTING TREE TO BE REPLACED

PLANTING AREA / RAINGARDEN OPPORTUNITY
PREVIOUS KERB LINE
SHARED ZONE - COLOURED ROAD ASPHALT
NEW BRICK PAVEMENT
NEW STREET LIGHTS
NEW SMARTPOLES AT LAWSON STREET INTERSECTION
NEW PEDESTRIAN LIGHT POST

NEW BENCH SEATS
NEW SANDSTONE SEAT BLOCKS
ELECTRICAL PILLARS (LOCATION TO BE FINALISED WITH DETAILED UNDERGROUNDING DESIGN)
CAFE OUTDOOR SEATING

ON 20 FEBRUARY 2012 COUNCIL ENDORSED PLANS TO IMPROVE AMENITY FOR THE AREA BY PROVIDING OPPORTUNITIES FOR OUTDOOR SEATING, SLOWING TRAFFIC AND GREENING THE STREET. THIS WILL BE DONE BY:

- WIDENING THE FOOTPATH ON THE SOUTHERN SIDE
- NARROWING THE ROAD, AND
- PROVIDING MORE STREET TREES AND PLANTINGS.

REFER TO FOOTPATH DETAIL PLANS

PAVEMENT EXTENSION AT INTERSECTION FOR INCREASED PEDESTRIAN AMENITY AND OPPORTUNITY FOR OUTDOOR SEATING AREAS.

IVY STREET (NORTH) PROPOSED TO BECOME LEFT TURN ONLY. SUBJECT TO RMS APPROVAL.

NEW INTERSECTION DESIGN INCLUDING;

- PAVEMENT WIDENING ON NORTH SIDE OF LAWSON STREET (ACHIEVED BY COMBINING THROUGH LANE AND RIGHT TURN TRAFFIC LANES),
- NEW BRICK PAVEMENT ON ALL CORNERS, AND
- NEW 'SMARTPOLES' WHICH PROVIDE HIGH QUALITY STREET LIGHTING AND REDUCE STREET CLUTTER BY PROVIDING INFRASTRUCTURE FOR TRAFFIC SERVICES AND TELECOMMUNICATIONS.

SUBJECT TO RMS APPROVAL.



RAISED PAVEMENT TO ENHANCE PEDESTRIAN AMENITY. UPGRADE INCLUDES IMPROVED STORMWATER INFRASTRUCTURE.

THE RAISED PAVEMENT IS DEPENDENT ON TRAFFIC CHANGES IN IVY STREET NORTH. (SUBJECT TO RMS APPROVAL).

SHARED ZONE IN IVY LANE AND LITTLE EVELEIGH STREET DEFINED BY RAISED PAVEMENT AT LAWSON STREET INTERSECTION TO ENHANCE PEDESTRIAN AMENITY.

(SUBJECT TO RMS APPROVAL).



NEW STREET TREES
Brush Box
(*Lophostemon confertus*)



RAINGARDENS
Filtering stormwater



BRICK PAVEMENT
Upgrade the pavement in the precinct

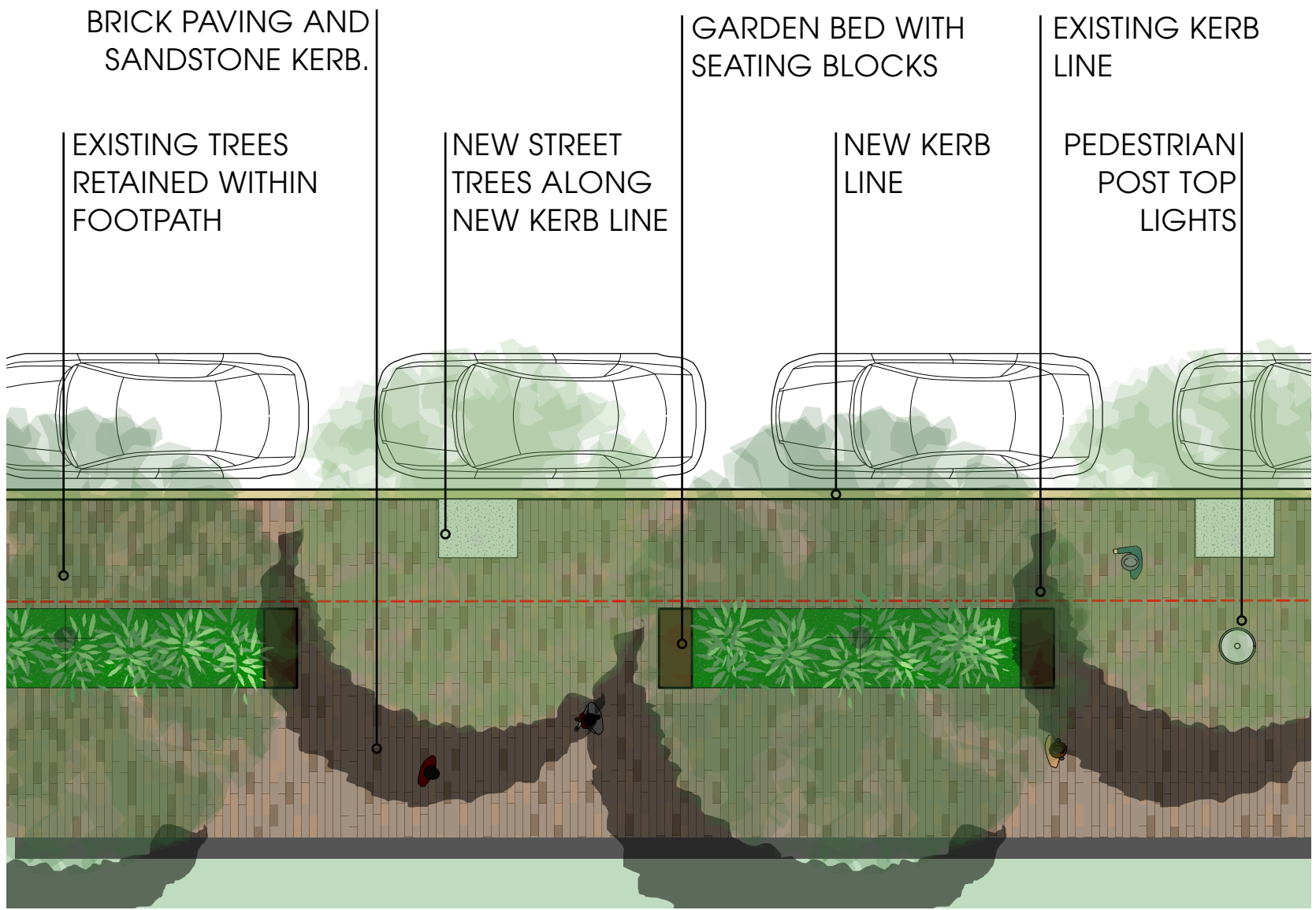


PEDESTRIAN LIGHTING
Post-top lighting to enhance civic quality



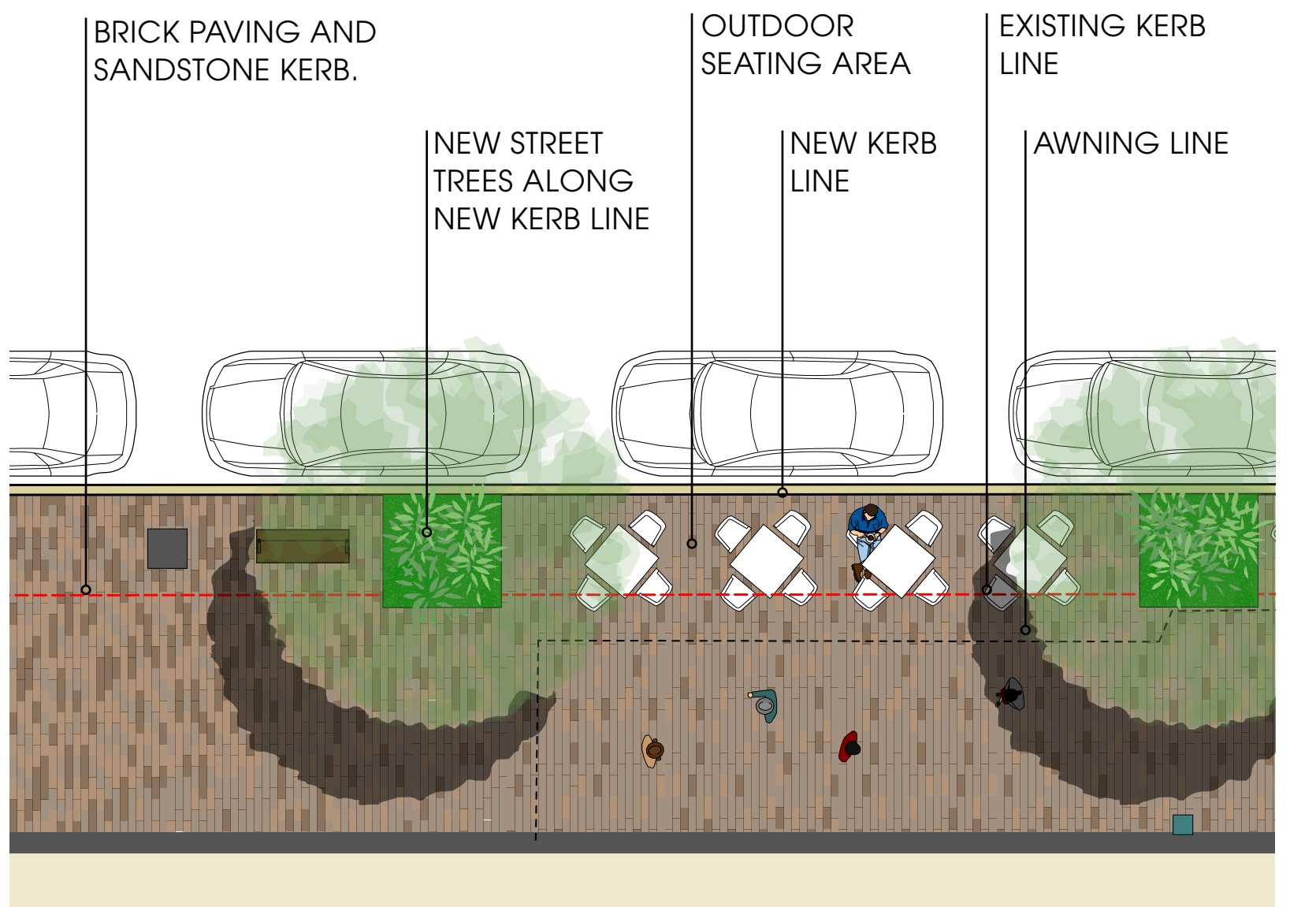
SEATING
New seating in footpath

MATERIALS PALETTE



FOOTPATH DETAIL PLAN

In front of Charles Kernan Reserve



FOOTPATH DETAIL PLAN

At shop fronts