

REDWatch 20 years
How did we get here?

by

Geoffrey Turnbull – REDWatch Spokesperson

Thursday 6 June 2024

Overview

A lot has happened in 20 years and we can't cover everything so tonight we will limit ourselves to the formation of REDWatch and a quick look at some of what has happened since then with a focus at the end on some wins and ongoing challenges.

- The context and formation of REDWatch
- Leaked papers and the RWA
- Tours
- Human Services
- The Built Environment Plans
- Some key sites, wins and ongoing challenges

Redfern Waterloo Partnership Project (RWPP)

- The Redfern Waterloo Partnership Project (RWPP) established in 2002 following stone throwing by youth at buses in Elizabeth St and after calls for government to address issues in Redfern.
- It was established through the place making section of NSW Premier's Department in partnership with South Sydney Council.
- It had a community Council giving people reason that NSW Government was prepared to work with the local community.
- Initial work was around human services such as the Redfern Waterloo Street Team and a Community Safety Plan led by Council.
- Consultants Morgan & Disney did a review of Human Services in 2004.

Redfern Waterloo Partnership Project - RED

- From mid- 2003 the RWPP publically started consultations on the “RED Strategy” and its plans for a new Redfern Town Centre.
- This was the first time the community understood that 1/3 of Redfern Waterloo was government land and that redeveloping that land was on the government agenda.
- The map opposite shows the Government land owners .
- 2004 was spent waiting for the RED Strategy to be made public

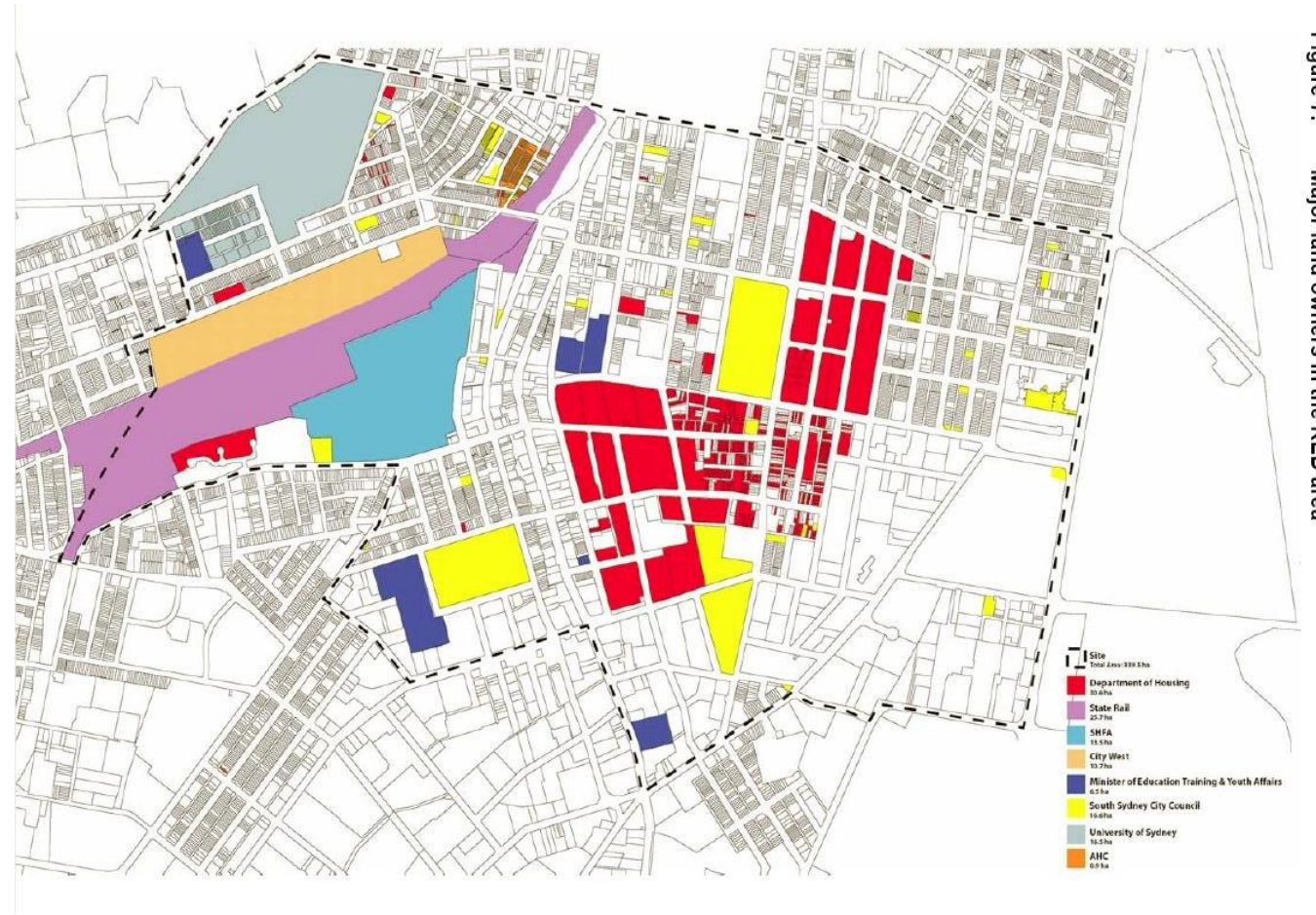


Figure 7: Major land owners in the RED area

Other things happening before REDWatch

- 6 Feb 2004 South Sydney Council Amalgamated into the City of Sydney
- 14 Feb 2004 Civil Unrest upon death of an Aboriginal young person.
- 26 Feb '04 Inquiry into issues relating to Redfern and Waterloo announced
- 16 March 2004 Redfern Community Centre Opened
- Geoff and Lyn Turnbull were doing email updates that continued after REDWatch was formed providing deniability for ALP people in REDWatch.
- Redfern Residents for Reconciliation was active around The Block and some early REDWatch participants were involved also in this group
- South Sydney Herald was publishing with Trevor Davies as an editor

The REDWatch Idea

- Following the unrest on The Block a meeting was called by Trevor Davies and the Darlington ALP Branch to discuss how best to support the community.
- Out of that meeting came the idea of a group to try and fill a similar role to the old South Sydney Australian Assistance Plan (AAP) which brought together interested residents and agencies around local issues. It is proposed to try and include a wide range of people.
- Before the first meeting had been called it had been named as RedWatch.

RedWatch Formed

- A Meeting of proposed “RedWatch” group was called for 16 May '04
- It was a meeting “of people interested in starting an ongoing group to monitor Redfern Waterloo developments, share information and look at any campaigns that may be necessary around the Inquiry, the RWPP, the RED Strategy and other issues important to the Redfern Waterloo area. It is proposed that an ongoing group meet every 4-6 weeks as needed”.
- Councillor Tony Pooley was asked along as the earlier chair of the RWPP Community Council to give a background on the RWPP & RED.
- After the formation meeting the email list included: Ben Spies-Butcher, Brian Smith, Deb Hayes, Deborah Wall, Geoff Turnbull , Helen Lutz, Jenny Leong , John Telford, Sylvie Ellsmore, Trevor Davies, and Verity Firth.
- By September there were 33 people on the email list. When registering details for the group with Council, Trevor Davies and Ben Spies Butcher were given as the Co-Convenors and Geoff Turnbull as Secretary.

The REDwatch Charter was then developed

REDwatch is a group of community residents and friends from Redfern, Eveleigh and Darlington who support the existing diversity in these areas and wish to promote sustainable, responsible economic and social development.

REDwatch recognises the importance of the Aboriginal community to the area.

Purpose

1. *Monitor the activities of the Redfern Waterloo Partnership, and especially the RED strategy, to ensure:*
 - (a) *The strategy benefits a diverse community*
 - (b) *Communication and consultation is comprehensive and responsive*
 - (c) *Pressure is maintained on authorities*
2. *Provide a mechanism for discussion and action on community issues.*
3. *Enhance communication between community groups and encourage broad community participation.*

The charter was taken into the objects of Redwatch on incorporation in 2006

REDWatch - Why How What we do explains how we implement the Charter and Objects

Three months of consolidation

This is the flyer for the second REDWatch meeting aimed to get more people involved. It featured Elizabeth Rice who was one of the planners that provided advice to REDWatch.

The focus during this time was the various Inquiries and the pending RED Strategy. Consultants, Morgan and Disney were also reviewing Human Services for the RWPP. REDWatch was doing the ground work so we were ready when this happened.

It was during this time we met with the local MP Clover Moore and her staff, Charlie Richardson from Inner Sydney Regional Council, Harvey Volke from Shelter, Garry Moore at NCOSS Etc. REDWatch also developed a relationship with Ian Thomson from “Our Park” campaigning on Redfern Oval, who was well connected in the Liberal Party and Ross Smith, an active Waterloo tenant.

Relationships were also built with Aboriginal Organisations.

REDwatch

Have your say in the future of

- **Redfern**
- **Eveleigh**
- **Darlington**
- **Waterloo**

Join your neighbours to discuss development in your area.

REDwatch is a group of residents working to make sure everyone in our community benefits from the State Government development plans for the area and not just the developers.

Find out about the Redfern Waterloo Partnership Project RED Strategy for the area. The areas largest landholder, the NSW State Government, is setting the draft framework for government and private developments like Eveleigh, Redfern railway station and The Block.

Come along to a community forum and hear Elizabeth Rice, a subcommittee member of the Planning Institute of Australia (NSW), explain the planning process and provide some ideas to us as residents on the areas we should watch closely when the draft is released.

WHEN 2pm, Sunday July 25

WHERE Redfern Community Centre, Hugo St

CONTACT Geoff Turnbull 9318 0824 or email: turnbullfamily@stassen.com.au

**Our area is ripe for development.
Let's make sure it's the right sort of development.**

The Redfern Waterloo Authority (RWA)

On 26 October 2004 Premier Carr announces:

- Establishment of the Redfern Waterloo Authority
- A 10 year plan for the area
- Frank Sartor will be the Minister Responsible
- The minister will coordinate all public funds for the area
- RWA will manage public infrastructure and land in the area
- The Australian Technology Park will be transferred to the RWA
- The RWA will pursue Public Private Partnerships
- Areas deemed State Significant will be called in

The Redfern Waterloo Plan was to see:

- The major redevelopment of the Redfern Railway Station, including the development of a significant town centre, with commercial and retail activity within a railway concourse;
- A new pedestrian bridge across the southern arterial roads of Gibbons and Regent Streets at Redfern;
- A new pedestrian and bicycle bridge to link the Australian Technology Park with North Eveleigh;
- Extending the entry requirements for the Australian Technology Park to encourage further commercial activity;
- Optimising use of Government land;
- Increasing rental or home ownership housing opportunities;
- Investigating the renewal of public housing estates;
- Developing a cultural strategy to support economic and urban regeneration; and
- Working with the City of Sydney Council and the Commonwealth Government on community renewal.

This was the RED Strategy Town Centre



Other Announcements alongside the RWA

- A new primary Health Centre in Lawson St was announced two days before the RWA. After opposition from the AHC and people in Lawson Street it was eventually moved to the Old Redfern Court House site.
- A Jobs Plan was also announced “to address the high levels of people in the area not participating in the labour force”.
- The Mogan and Disney review of Human Services was released with the the government supporting the option “to embark on a developmental strategy which builds on the existing strengths; encourages more integrated service models and approaches, voluntary mergers, amalgamations and collocations; and includes the community in finding solutions”.

The leaked Cabinet Papers

On the 29th November the Sydney Morning Herald publishes leaked cabinet documents used in the Government's planning for the RWA. The articles cover many pages with follow on articles the next day.

The papers also reveal that if the Block is redeveloped, some government-owned lands will be worth up to 30 per cent more. We learn later that the funding of the Pemulwuy project was also to be funded but fell over when the AHC refused to sign over the control of the Block to the government for a period.



REDWatch & the RWA Legislation

To Legislate the Redfern Waterloo Act the Labor Government needed to get Legislation through the an Upper House where the ALP needed four additional votes. To change the legislation REDWatch needed to:

- either convince the Minister to make changes or
- get support from the Liberals and the majority of the cross bench

REDWatch prepared its proposed list of changes and met with Minister Sartor, the leader of the Opposition in the Upper House and with cross benchers. It also set up meetings with Aboriginal Organisations and MPs

Community Rally Against Government Plans

While this was going on REDWatch was active with the media and putting pressure on the Government.

A Rally against Government Imposed Plans organised by REDWatch, Redfern Organisation of Aboriginal Unity and Inner Sydney Regional Council for Social Development was held on 6th December at Waterloo Green

Towers demolished as aid to social levelling

Debra Jopson
and Gerard Ryle

The distinctive high-rise public housing towers of Redfern and Waterloo could be pulled down under a \$540 million plan that allows private developers to profit from government land.

The Department of Housing is the largest single landholder in a 340-hectare area earmarked for massive redevelopment.

About two-thirds of the department's 23.4-hectare Redfern-Waterloo estate would be handed to private developers, say confidential government documents dated October.

The developers would be allowed to build 6300 apartments on 15.8 hectares of the department's land, bringing in 12,500 new private tenants and owners to change the social mix.

The aim is to redevelop the estate, which contains 3519 apartments, at no cost to the Government, the papers reveal.

Limits on floor space in the area should be scrapped and developers given the go-ahead to build more than the amount now allowed, the documents say.

The new Redfern-Waterloo Authority could use the money from the private development to build new houses, refurbish existing stock and temporarily move 200 families to other accommodation during the reconstruction phase, the papers say.

But the documents reveal that the Government has wider goals than just making money out of public land.

It also plans to completely change the face of the two suburbs by reducing the proportion of public tenants and attracting more affluent residents to the area.

The 7000 public tenants would be allowed to stay. They make up about 35 per cent of the population, which stands at about 20,000.

The plan is to add 20,000 new private renters and owners, doubling the area's population. This will reduce the overall percentage of public housing to 17.5 per cent.

The goal is to "integrate" the wealthier newcomers to "break down any stigma associated with concentrated public housing", the documents say.

But the papers also show the Government has a tougher option. If it wants to move public tenants out permanently and get a quicker result, it could sell a



New era ... the appearance and social mix of the Redfern-Waterloo estate would be radically altered under a cabinet plan to allow 6300 private apartments on Department of Housing land. Photo: Dean Sewell

bigger part of the site to private developers and use the money to buy public housing elsewhere.

The overhaul would include a \$297 million demolition and rebuilding plan that is likely to see

the end of the 30-storey Turanga tower where the Aboriginal youth Thomas "T. J." Hickey died in February when he crashed his bike, sparking the Redfern riot. Its twin, Matavai, is

also likely to go, along with seven 17-storey buildings.

"It is likely that the majority of the high-rise buildings (which represent two-thirds of the stock) will need to be demolished

because they will be the hardest to refurbish to meet current standards and to allow the mingling of different types of occupier," the documents say.

Private sector development

could extend over 10 years "depending on the rate of take-up of the new apartments", they add.

This would mean "a lower ultimate proportion of public housing tenants in this area".

The papers reveal that the average age of tenants on the Redfern-Waterloo estate is 59 years. Almost one in three public housing tenants in the area receives a disability support pension.

Upper House Amendments & Call for Papers

The Legislation went to the Upper House on 8 December where the Liberal Party supported a Greens Call for Papers motion requiring the government to supply background papers to the Upper House.

When those documents were accessed we learnt that there was pressure from the development lobby to expand the area covered by the RWA out of Redfern Waterloo so that it extended from Chippendale to the Mascot airport.

One of the key changes REDWatch negotiated was to limit the extent to which the Minister could change the area to 5%.

What got changed in the Act

- Inserting Objects of the Bill to make it clear the Bill is designed to improve public amenity, quality of life and safety in Redfern-Waterloo;
- The NSW Heritage Council must be consulted before altering any item listed on the State Heritage Register;
- Clarifying the ability of the RWA to impose certain levies on State Significant development;
- Limiting any future expansion of the operational area of the RWA;
- Guaranteeing Aboriginal representation on the Advisory Committees; and
- Consulting with the Aboriginal Housing Company and the Aboriginal community on the long term strategic vision for the Block.

In early 2005 REDWatch got a website



An important addition to REDWatch was its website put together in early 2005 by David Tickle and Nik Lam. It enabled REDWatch to document the area's changes and challenges in an on-line resource centre that became the areas corporate memory.

REDWatch acknowledges the work of Nik Lam and Jose Perez in keeping the website functioning (most of the time) for almost 20 years.

Much of this presentation has been pulled from the website. A new site is planned and is being built. The history will be retained.

RWPP Studies and Community Meetings

The RWPP studies passed to the RWA and Frank Sartor as Minister for Redfern Waterloo. Repeated requests for the studies were denied by the RWA and Government as “Cabinet in Confidence”.

Despite the Ministers promises to meet with the community, he only met with ALP Branches for the first few months.

The Minister’s one meeting with community was a meeting in June 2005 at PCYC for public housing tenants.

Ministerial Advisory Committees (MACs) were set up that never met with the Minister. REDWatch members were on the Built Environment (BE) and Human Services (HS).



Redfern Waterloo Tours

This was the first of many guided tours of Redfern Waterloo.

REDWatch worked closely with Squatspace for their “Redfern-Waterloo Tours of Beauty” – tagline “the future is so bright you have to wear shades”. They ran around 15 tours from late 2005 until 2009 with an anniversary tour in 2015

Bus tours were also run for Department of Planning by REDWatch & UrbanGrowth.

REDWatch still does Tours for students and events as a fund raiser.



MEDIA RELEASE

**“See Redfern before Frank Sells It” Parliamentarian’s Tour
12.30 – 2.00 | 4th May 2005**

Community Group REDWatch has issued invitations to all NSW Parliamentarians to come on a bus tour of the sites likely to be sold by Redfern-Waterloo Minister Frank Sartor to fund the Redfern Waterloo Authority and its redevelopment of Government infrastructure in Redfern-Waterloo.

Possible Sites include Redfern Public School closed a couple of years ago, the Rachael Foster Hospital Site, the recently vacated Redfern Police Station and the soon to be closed Redfern Court House.

REDWatch spokesperson Geoffrey Turnbull said “REDWatch believes that is unfair for suburbs like Redfern and Waterloo to be expected to fund the building of state assets like a major Railway Station and renewed Public Housing by flogging off scarce inner city public land and some of the old government sites which are very much part of the area’s history. We are sure that it wouldn’t happen in Vaucluse or Pymble so why should it happen in Redfern and Waterloo”.

“At a time when people are talking about the lack of space in Sydney for recreation and sporting activities why would you sell of scarce public land to make up for lack of up front government funding” Mr Turnbull said.

The SMH of April 11 2005 broke the story that Minister Sartor was seeking a \$36 million loan from the NSW Government to fund the new Redfern Waterloo Authority until sales of public land could be made to inject funds into the self funding authority.

A copy of the email to Parliamentarians follows for your reference.

For Further Information contact:

Geoffrey Turnbull
REDWatch Spokesperson
Ph Wk: (02) 9318 0824
email: turnbullfamily@stassen.com.au

Trevor Davies
REDWatch Tour Organiser
Ph: 04 0000 8338

REDWatch is a residents and friends group covering Redfern Eveleigh Darlington and Waterloo (the same area covered by the Redfern Waterloo Authority). REDWatch monitors the activities of government activities such as the RWA and RWPP and seek to ensure community involvement in all decisions made about the area.

Human Services and the RWA

The joint marriage of the RWPP Human Services side and the RWA development authority side did not last long, with the human services side rolled into the RWA in mid 2005 and the RWA taking over that role and funding. No mergers transpired. The RWA produced a number of inadequate top down plans that ticked the we produced a plan box.

- Human Services Plan Phase 1 – Draft October 2005 – Final 22 Dec 2005
- Employment & Enterprise Plan – December 2005 – May 2006
- Human Services Plan Phase 2 – June 2006 – July 2008
- Creating a Culture of Work in the Redfern Waterloo Area – Nov 2006

There was some useful multi agency engagement around community issues on Waterloo Green just as the RWA human services role ended.

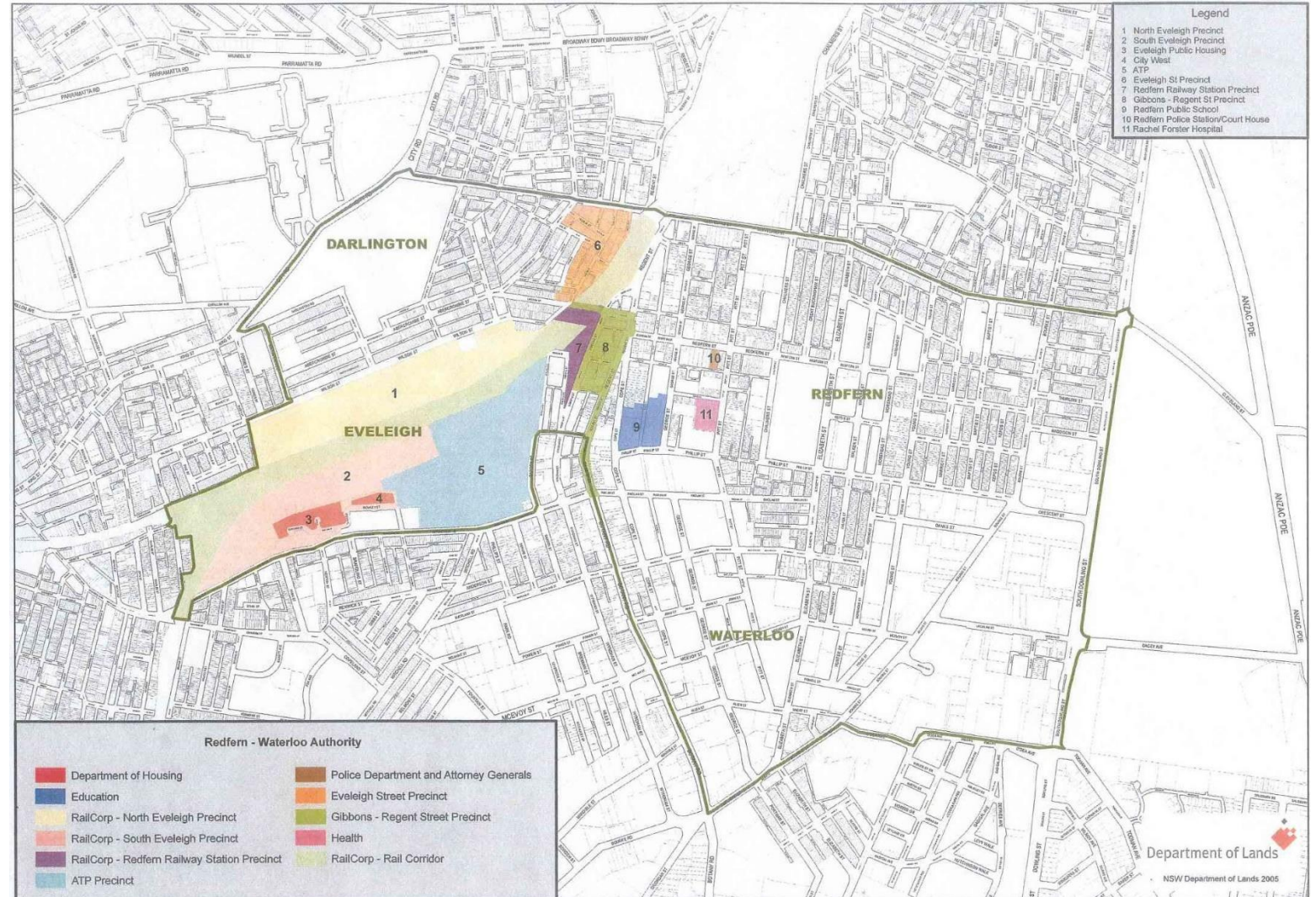
REDWatch was involved through out this and has documented [Human Services in Redfern and Waterloo: A potted history listing of plans, interventions, activities, consultations and reports](#) since the time of the RWPP.

State Significant Declaration

Planning control of these areas were removed from the City of Sydney and passed to the RWA as State Significant on 31 May 2005.

Eveleigh Street and the Gibbons – Regent Street Precincts were the only areas of non-government land.

The public housing estates were not included.



REDWatch's Plan for a Plan

REDWatch had a group working with two planners on an integrated planning approach for the Redfern Plan. We provided this to the RWA on May 31 2005

In response we were told that everyone knows what the problems with Redfern Waterloo are and that the RWA will produce their plan and people can tell them if they got anything wrong.

Any pretence of the RWA working with the community on a plan had vanished.



STATEMENT

HOW TO PLAN FOR REDFERN-WATERLOO

- REDWatch believes that an integrated planning framework is needed for the Redfern-Waterloo Plan (RWP) as:
 - the RWP has a 10 year time frame
 - it will be introduced in stages
 - without a clear idea of what the RWP hopes to achieve overall – and how – it will be difficult to make sure that all its stages work together to create the future the community wants.
- To create this future, we need a broad range of interdependent issues addressed over the 10 years, not just the parts that relate to government land or government priorities.
- To help develop an integrated planning framework that can achieve this, REDWatch has prepared:
 - a set of questions and answers about the RWP and the kind of integrated planning framework we think it needs
 - draft principles on community participation for all aspects of the RWP, **including the development of an integrated planning framework**
 - a draft integrated planning framework (we called it “The Plan in Outline”).
- REDWatch is forwarding this material to the RWA as an example of the type of approach they could take in preparing the Redfern Waterloo Plan.
- REDWatch does not claim either that this is the only possible format for an integrated planning framework, or that the content within it represents all views in Redfern and Waterloo.
- REDWatch does, however, urge the Minister and the RWA to tell the people of Redfern and Waterloo - as a matter of urgency:
 - how they propose to develop an integrated planning framework for Redfern-Waterloo
 - how the community will be able to participate in its development, and
 - when they expect to start the framework and have it completed.

Geoffrey Turnbull

On behalf of REDWatch, May 31st 2005.

REDWatch, c/- PO Box 1567, Strawberry Hills NSW 2012

Ph Wk: (02) 9318 0824 email: turnbullfamily@stassen.com.au

RWA Built Environment Plans

The RWA produced two Built Environment Plans (BEP)

- BEP (Stage One) produced planning controls for all the State Significant designated areas. The Draft was produced in February 2006 and Finalised in August 2006.
- BEP (Stage Two) covered all public housing in the RWA's area. A draft was released in January 2011 when the RWA was being wound into the Sydney Metropolitan Development Authority (SMDA). It coincided with Land and Housing Corporation doing a separate master plan for the same sites. Agreement could not be reached and no final BEP or planning controls were produced.

Sydney Metropolitan Development Authority

December 2010 – June 2014

Takes responsibility for wider area (not just Redfern Waterloo)

Human Services role dropped

Follows up BEP2 with studies on community facilities, Social Impact Scoping, Urban Design, Traffic, Affordable housing etc. Many are not released.

UrbanGrowth Central to Eveleigh

June 2014 – Nov 2016

UrbanGrowth took over from the SMDA and came with a focus on developing the railway corridor.

When it left it handed responsibility for sites back to the landowners.



Central to Eveleigh Corridor: Concept Plan

Introduction

The 'Central to Eveleigh' (C2E) corridor can provide an excellent inner city location for new homes, jobs and infrastructure. The area being investigated includes the land used for rail operations and adjoining land between Goulburn Street (southern CBD) and Erskineville Station. This Concept Plan identifies the logical precincts in the corridor, the vision for each and broad timing for each for discussion with the community and government agencies.

Public Benefits

- New connections over and along the Corridor, connecting neighbourhoods with transport and other attractions.
- New activated and safe public spaces.
- New dwellings and a range of housing types, including affordable and social housing.
- New local jobs.
- New community facilities, local services and shops.
- New transport infrastructure.
- Interpretation of local history and adaptive re-use of heritage buildings - expansion of the Corridor's cultural role.
- Design excellence.
- Significant public and private investment - attracting international investment and opportunities.

Challenges

- Complex and costly construction over active rail operations.
- Managing the transition between new tall buildings and low-scale existing neighbourhoods.
- Significant level changes across the Corridor and the impacts for design.
- Future rail services and infrastructure to be accommodated.



1 South Eveleigh Precinct

VISION

A primarily residential precinct centred around neighbourhood scale shops and high quality public spaces. Walkable streets with excellent connections to the surrounding neighbourhoods.

BUILT FORM

Diverse apartment buildings. Taller residential buildings adjacent to the rail corridor with lower buildings on the precinct edges to provide a transition to the existing low-scale neighbourhood.



2 North Eveleigh Precinct

VISION

A primarily residential precinct close to cultural, education and work related activities. Significant heritage buildings are adaptively re-used to give the precinct a distinct character.

BUILT FORM

Diverse apartment buildings mixed with significant heritage buildings. Taller buildings adjacent to the rail corridor with lower buildings on the precinct edges respecting the existing neighbourhood character.



3 Australian Technology Park Precinct

VISION

Attract globally competitive industries to an enhanced business innovation precinct, close to universities. Explore more diverse uses, services, entertainment and facilities to support a vibrant place. Access into and through open spaces for links to Redfern railway station and community facilities.

BUILT FORM

Medium to high density commercial buildings with retained significant heritage buildings and items.



4 Redfern Precinct

VISION

A new, accessible and user-friendly station with high-quality public spaces. A mix of high density employment and residential uses as part of station re-development. Podium development over the rail corridor can create wide public places connecting North Eveleigh and Defining with ATP Lawson Square and Redfern Street.

BUILT FORM

High density commercial and residential buildings combined with a wide public place over the rail line. Retain most significant heritage items.



5 Central Station Precinct

VISION

A world class commercial and retail transit hub that provides for expansion of Sydney's CBD. Signature commercial, retail and residential buildings designed to meet major tenant needs for this unique city location. Excellent cross-corridor connections that link high-density neighbourhoods and UTS to Prince Alfred Park.

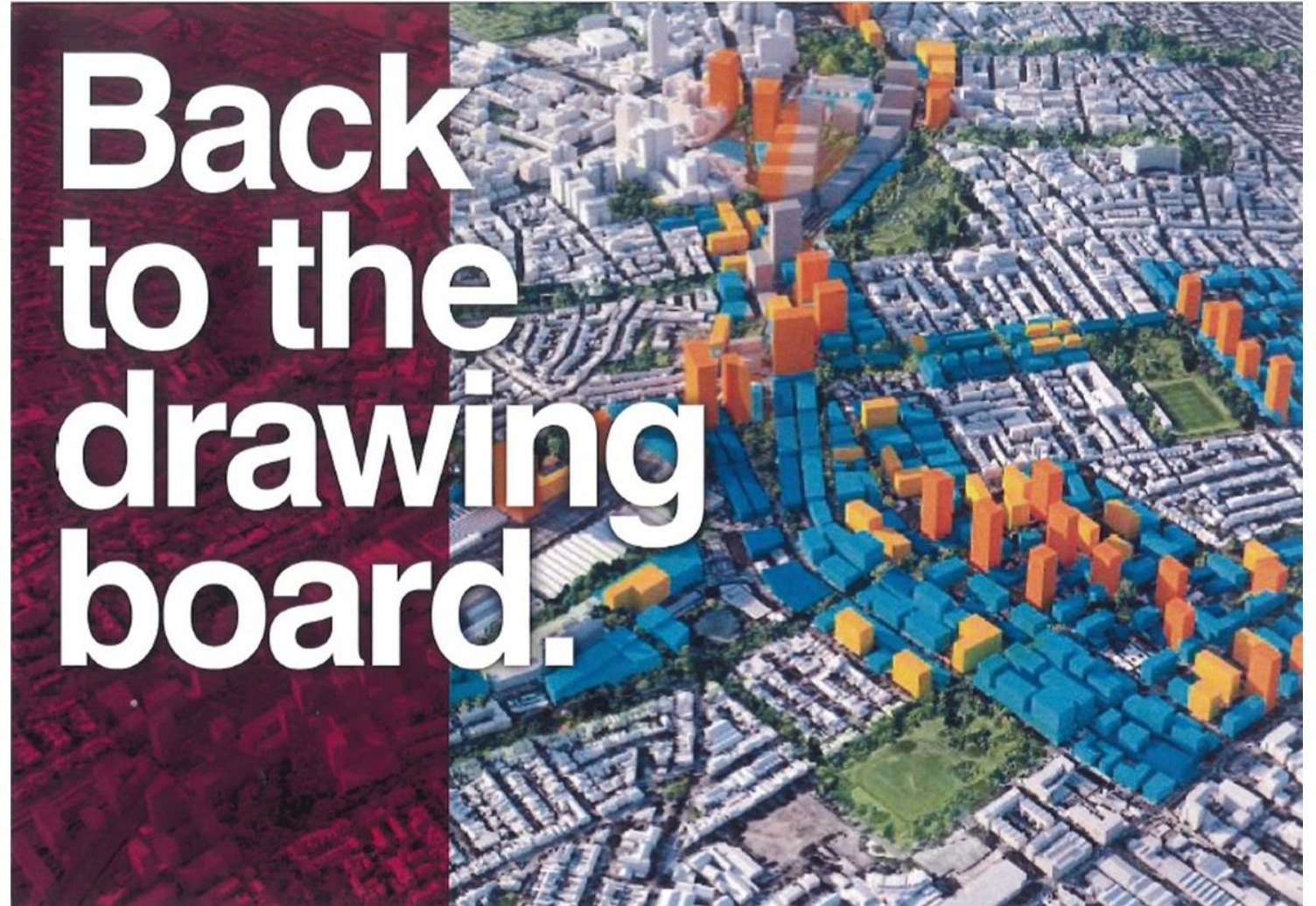
BUILT FORM

High density commercial, retail and residential buildings. Landmark towers and large floor plate retail and commercial offerings around the existing station core. Retention of significant heritage buildings and incorporation of new high quality public spaces.



Central to Eveleigh and Waterloo

With the Metro Station in Waterloo UrbanGrowth expanded its proposals to Waterloo public housing, the Metro site and Regent Street. The City and the community including REDWatch pushed back



Infrastructure NSW – where the RWA died

The RWA had been absorbed by the SMDA and UrbanGrowth and with the folding up of UrbanGrowth the remnants ended up with Infrastructure NSW.

It is not known what happened to the two RWA funds.

- The RWA Affordable Housing Fund collected contributions from the CUB / Central Park site as well as from developments in the RWA area. These funds have not been spent in the area to our knowledge.
- The RWA Infrastructure Plan also collected funds. Some of that money was to go towards the promised connection between North and South Eveleigh at Carriageworks.

If we look again at Carr's list of Redfern Waterloo Plan deliverables what was not delivered were the community benefit bits

- The major redevelopment of the Redfern Railway Station, including the development of a significant town centre, with commercial and retail activity within a railway concourse;
- A new pedestrian bridge across the southern arterial roads of Gibbons and Regent Streets at Redfern;
- A new pedestrian and bicycle bridge to link the Australian Technology Park with North Eveleigh;
- Extending the entry requirements for the Australian Technology Park to encourage further commercial activity;
- Optimising use of Government land;
- Increasing rental or home ownership housing opportunities;
- Investigating the renewal of public housing estates;
- Developing a cultural strategy to support economic and urban regeneration; and
- Working with the City of Sydney Council and the Commonwealth Government on community renewal.

REDWatch 20 years
Some Actions and Campaigns

by

Geoffrey Turnbull – REDWatch Spokesperson

Thursday 6 June 2024

Many REDWatch Public Meetings



Many Candidate forums



Lots of meetings around Public Housing

REDWatch has also seen the importance of working with public housing tenants who do not have the same resources as private owners and renters.

As a result we are sometimes accused of spending too much time on public housing issues. In part that is because BEP2 went on for two years and planning for Waterloo has gone on for over 8 years and there are many more years to come on the area opposite.

For more on the history of this site see our presentation [Waterloo Redevelopment - How did we get here?](#)



BEP1 – Saving Marian Street Park

The RWA put a proposal to build over Marian Park in BEP1. REDWatch worked with locals especially in the Watertower to get submissions opposing this.

The area commonly referred to as “Marian Street Park”, bounded by Gibbons Street and Rosehill Street, will be zoned ‘Public Recreation’ and the proposed maximum height limit of 18 storeys has been removed from the BEP. It is also proposed that the open space be dedicated to the Council of the City of Sydney, subject to adequate funding being committed to upgrade the park.

(RWA Fact Sheet 6 – 30 August)

Actions in support of Aboriginal Housing

When the AHC would not sign over control of The Block the NSW Government decided it would no longer support Aboriginal Housing on the Block. This set up a prolonged battle between Frank Sartor and Mick Mundine.

REDWatch was active in support of the Pemulwuy project, helping to organise and participate in the Candle Light Vigil in August 2006 and other events and committees.

After many iterations the AHC self funded the Pemulwuy Project. The challenge after 20 years is to build more Aboriginal Affordable Housing in Redfern Waterloo to maintain a viable long term community.

Saving the Large Erecting Shop (LES)

BEP1 rezoned the LES for a 12 storey building on the basis it was in bad repair.

REDWatch worked with 3801 Ltd, Friends of Eveleigh and ex-workers to save this building.

One of the last acts of the RWA was to remove the 12 storey listing and to restore existing height and heritage uses.

Transport rail heritage subsequently removed 3801 Ltd as a tenant and TfNSW and Mirvac have a rezoning for commercial uses on the site. The heritage building itself is safe.



Large Erecting Shed, Eveleigh NSW



Assessment of Adequacy – Structure and Electrical Services

Project no: 20618

Prepared For:

3801 Limited
PO Box 333
Alexandria NSW 1435
Tel 02 9869 2749
Fax 02 9869 2749

Prepared By:

SGA Property Consultancy Pty Ltd
Level 2
120 Clarence Street
Sydney NSW 2000
Tel 02 9299 2988
Fax 02 9299 5288

April 2006

Keeping the Active Blacksmith

Since 1991 there was an active blacksmith in Bays 1&2 at South Eveleigh. The ATP construction included an acoustic wall so the workshop could continue to function in proximity to its new uses. In 2008 the RWA served the blacksmiths a notice to quit sparking a campaign and public meeting to save the blacksmiths.

That battle was won and the DA for Mirvac to redevelopment the Locomotive workshop allowed the blacksmiths to operate 24 hours a day 7 days a week and all tenants needed to be aware of that provision.

KEEP THE TRADITION
EVELEIGH BLACKSMITHING WORKSHOP OPEN DAY

10AM - 3PM
SUNDAY 17TH
AUGUST

WROUGHT ARTWORKS WILL
GIVE TOURS AND
DEMONSTRATIONS TO THE
SOUND OF BAG PIPES AND
SAUSAGES SIZZLING!

RWA SEEKS TO CLOSE THE
OPERATING BLACKSMITHING
SHOP IN REDFERN

SO COME ALONG &
SHOW YOUR SUPPORT!

**SAVE
THE EVELEIGH
BLACKSMITHS
SHOP!**

AUSTRALIAN TECHNOLOGY PARK
BAYS 1&2 LOCOMOTIVE WORKSHOP
CNR GARDEN & BOUNDARY STREETS, REDFERN
www.redwatch.org.au/RWA/statesignificant/atp/blacksmith
www.wroughtartworks.com

The RWA Heritage Taskforce

Following the Blacksmith Campaign REDWatch worked with Heritage Groups to ask for the establishment of a Heritage Taskforce. The Minister agreed and REDWatch sat on that taskforce from December 2009 until it was wound up prior to the wind up of the RWA.

The Taskforce managed to strengthen the way heritage was seen at the ATP and over the former railyards.

Geoffrey Turnbull
PO Box 1567
Strawberry Hills NSW 2012
Phone: (02) 9318 0824

The Hon. Kristina Keneally MP
Minister for Planning
Minister for Redfern Waterloo
Level 35 Governor Macquarie Tower,
1 Farrer Place,
Sydney NSW 2000, Australia

Dear Minister,

Request to Establish a Heritage and Tourism Committee for Eveleigh Railyards

On 28th October 2008 a wide range of Heritage groups, practitioners, ex workers and volunteers met at the ATP to discuss heritage issues across the former railway site, including the twelve heritage sites identified in the RWA Heritage schedule. This meeting followed the public meeting resolution from the Wrought Artworks open day that requested heritage groups to meet with the NSW Government about the "best way to preserve and manage all railway heritage locations, equipment and rolling stock within the former Eveleigh Railway Workshops in perpetuity".

The October meeting was pleased to note some recent government initiatives that can positively impact upon the heritage value of the Eveleigh site. These include:

- The RailCorp board approving the retention of the Large Erecting Shop for rail heritage purposes
- The negotiation of a Heads of Agreement for the continuation of Wrought Artworks operation of the Heritage Blacksmith Shop at the ATP and greater recognition of the heritage responsibilities of the ATP
- The proposal for a Workers Wall in the RWA North Eveleigh HIS
- The proposal for Heritage Walking Tours in the RWA North Eveleigh HIS.

To date there has been no mechanism for the RWA to meet with heritage operators, practitioners and those concerned with developing a heritage component in the future Eveleigh Railway Precinct. We write to request you, as Minister for Redfern Waterloo to establish such a mechanism.

We note that in other areas of your Redfern Waterloo portfolio that you have inter-departmental mechanisms to co-ordinate government departments operating in the area and that you also have Ministerial Advisory Committees and taskforces that include government and non government organisations and residents. We believe such mechanisms are also necessary to deal with heritage issues across the site.

Government bodies which we would see as having an interest in the site and being involved on the inter-departmental side include the RWA, ATP, Office of Rail Heritage, NSW Heritage Council, Arts NSW and Tourism NSW.

Organisations represented at our meeting on 28th October would be prepared to work with an inter-departmental committee to develop the heritage and heritage tourism potential of the Eveleigh site.

The committee could deal with / advise on a range of heritage issues including:

- the development of a comprehensive Eveleigh Heritage Interpretation Strategy
- the development of a Heritage Tourism Strategy for Eveleigh
- the establishment and monitoring of conservation management plans where required

- the encouragement of active heritage uses where possible including heritage trade training for volunteers and the creation of new heritage employment opportunities.
- the establishment of business plans to enable heritage activities to operate in the long term with minimum requirement for government funding.
- Mechanisms for the preservation of the labour and social history of those who have worked on the site including the maintenance of a workers register and the creation of a Workers Wall.

We encourage you to give serious consideration to the establishment of such a mechanism. We would be happy to set up a meeting to explore this proposal and the issues raised with either yourself or one of your staff.

One area where some progress may be possible is to explore the possibility of heritage funding for the ATP to undertake work under its Conservation Management Plan (CMP). In 1996 a large grant was made to the ATP on a dollar for dollar basis for the ATP to undertake work covered in its CMP. We understand that these funds were not expended and that they were returned to the Heritage Council. As a result important conservation work has never been undertaken. Given your ministerial responsibilities for the RWA / ATP and the Heritage Council we also ask that you explore the possibility of these funds again being made available on a similar basis to undertake the work detailed in the original heritage grant and the CMP.

We would be happy to provide any further details your office may require to allow the matters raised to be explored.

Yours Faithfully,



Geoffrey Turnbull
Meeting Chairperson
On behalf of the Meeting Attendees

Meeting Attendees included those associated with the following groups:

3801 Ltd
3801 Ltd Volunteers
Powerhouse Museum Volunteers
Friends of Eveleigh
National Trust (NSW)
Wrought Artworks
Ass Prof Lucy Taksa - UNSW Historian
REDWatch
Trains of Treasure Exhibition
City of Sydney Office of Lord Mayor
City of Sydney Heritage Planners
Transport Signal Communications Museum
Redfern Waterloo Chamber of Commerce
Jane Bennet - Heritage Artist
Richard Butcher - Heritage Author
Retired Eveleigh Workers
Heritage Consultants

Protecting ATP public space, access & heritage

In 2015 when the EOI for the ATP sale was announced REDWatch approached the City of Sydney Council to undertake an independent assessment of the implications for the sale.

REDWatch then worked with UrbanGrowth to have positive covenants and easements put in place to protect public space, public access and use of facilities on the site. The provisions also ensured that it would be possible to land a cross railway line connection on the site and that the buyer would be required to manage the heritage machinery collection in the same way as it would be had it stayed in government ownership.

Heritage Outcomes at South Eveleigh

The easements on the ATP sale strengthened the hand of REDWatch and heritage people to extract the best possible heritage result out of that development. There were many plans under the ATP but no money to make them happen.

Mirvac's desire for a loading dock through the heritage bays resulted in one of the most expensive loading docks they have ever produced.

While much was achieved, and not everything people might have wanted, there are also many heritage elements agreed that have not been fully implemented in accordance with the original plans.

REDWatch has more work to do here.

North Eveleigh – Saving the Paint Shop

RWA's BEP1 allowed a building through the paint shop, as did the North Eveleigh Concept Plan. When TfNSW came back to revise the planning controls REDWatch managed to get support from the community for removing that high-rise proposed. The approved rezoning leaves the high value heritage Paint Shop in tact.

Other concerns about the proposed development especially in relation to public space remain unresolved as they depend on a Voluntary Planning Agreement between TfNSW and City of Sydney Council

Redfern Station GIPA

In October 2013 Transport for NSW released, following a GIPA request initiated by Lift Redfern, a number of studies undertaken between 2006 and 2010 on Redfern Station - over 800 pages in total.

The Documents primarily relate to studies undertaken in preparation for a Gateway review to receive funding from Government. The documents are on the REDWatch website.

Outstanding from BEP1 is a proposed 14 storey building above Platforms 11 & 12. That development is supposed to include lifts to the underground platform and a disability access from the Southern Concourse to buses. This plan is still active within TfNSW.

Lift Redfern Campaign

Lift Redfern saw over 11,500 signatures collected to call for a debate in Parliament about putting lifts into Redfern Station.

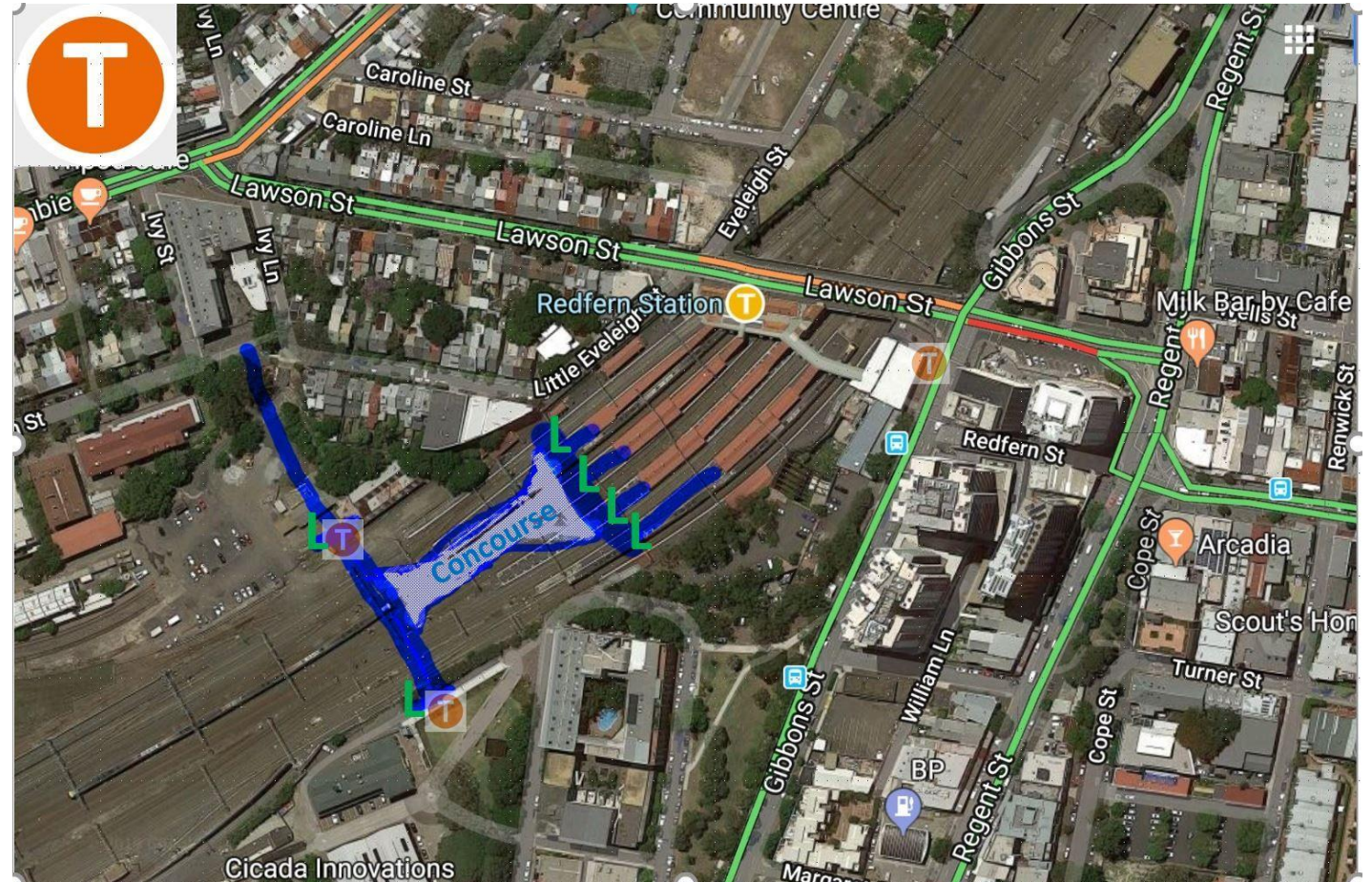
One lift was installed on Platform 6 making it possible for disability access by changing at another station to that line.



Pushing public connection near the station

REDWatch unsuccessfully worked with architects and the local community to argue for a public connection between North and South Eveleigh linked to the paid concourse at Redfern Station.

This however lead to the incorporation of free community access in the Southern Concourse.



The only public access on a paid concourse

Free community access next to ticket barriers on Redfern's Southern Concourse is a result of REDWatch pushing for such access. The signs had to be made specially.



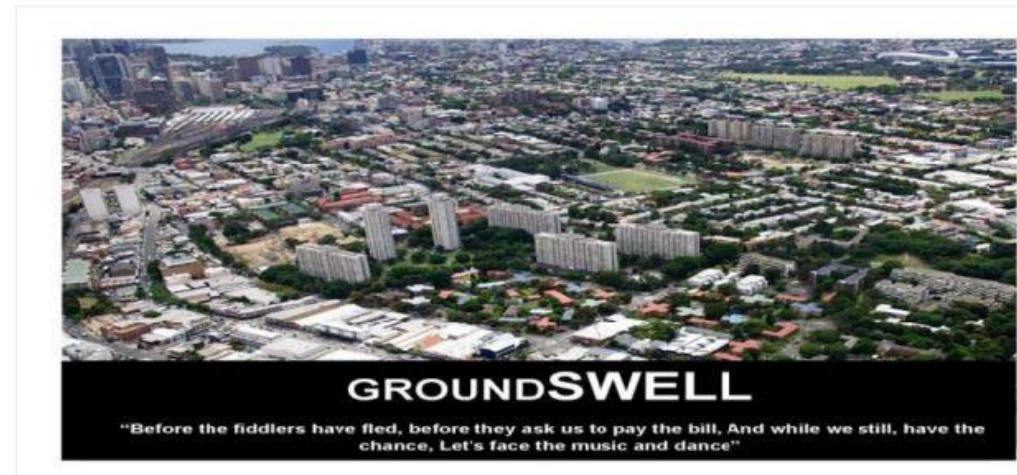
Working with NGOs through Groundswell

When the LAHC Master Plan was being developed pressure was being put on non-government agencies not to oppose the plan and inference was made that funding could be impacted for those that made life difficult.

Groundswell was set up by NGOs, including REDWatch, to provide an umbrella organisations to work with residents without agencies having their funding threatened.

Groundswell still operates and represents agencies in discussions with Homes NSW, Health and other agencies.

Be Part of a Groundswell



An invitation to support a Redfern and Waterloo Coalition supporting residents

Food for Thought

The quotes below seem applicable to the situation agencies and residents find themselves in

"Before the fiddlers have fled, Before they ask us to pay the bill, And while we still, Have the chance, Let's face the music and dance" – Writer Irving Berlin Performed by Frank Sinatra

"People need to be educated for participation, developing consciousness of their situation, to see what happened and why. You cannot just ask people what they want, people to have to learn how to ask, analyse and question. It is a dialectical process rather than information giving one" - Paulo Freire

"If the structure does not permit dialogue the structure must be changed" — Paulo Freire.

Working with other community groups

REDWatch has also had an active role in working with other groups both within the City of Sydney and across State.

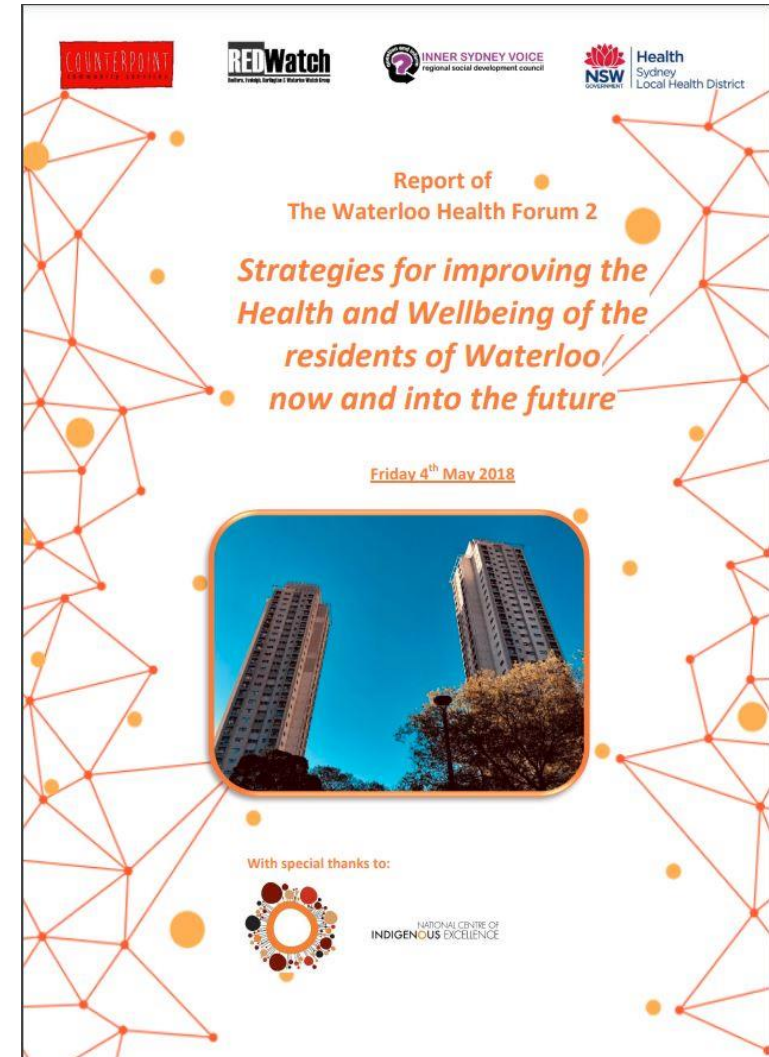
As REDWatch dealt with state government organisations much more than local council, we had first hand early experience of dealing with planning processes like Part 3A, State Significant developments and some government departments, which we could share with others.

REDWatch was an early member of the Better Planning Network (BPN) when in 2013 the NSW Government proposed major changes to the NSW Planning Legislation and was represented on the BPN leadership group for a time and involved in the preparations of “Planning for People - a Community Charter for Good Planning in NSW”. (thecommunitycharter.net.au)

Action Plan with Sydney Local Health District

REDWatch has worked with other agencies to try and improve access to health services in Waterloo. This has lead to two Health forums, the appointment of a Healthy Living Link Worker and Health Impact Assessments.

REDWatch is part of the Human Services Collaborative with SLHD and as part of Groundswell meets regularly with SLHD on the SLHD Addendum to the Waterloo Plan.



Action Plan with DCJ Housing / Homes NSW

Following the end of RWA, REDWatch as part of Groundswell has been trying to get an integrated human service approach re-established.

Initial agreement by DCJ prior to the split with LAHC lead to numerous discussions with DCJ and LAHC. These discussions laid the foundation for the Waterloo Human Service Collaborative.

REDWatch is part of the Human Services Collaborative with Homes NSW. As part of Groundswell we meet regularly with Homes NSW on issues related to the Homes NSW Addendum to the Waterloo Plan.

Over the last few years a lot of REDWatch time has gone into the Waterloo Human services Collaborative – www.waterloo2017.com

REDWatch is an active member of the Collaborative and Geoff Turnbull Co-Chairs the Service Integration and Systems Co-ordination Group.

The Collaborative has agreed an Action Plan, which has been derived in response to issues raised by tenants.

The Collaborative includes representatives from Government Departments, NGOs and tenants.

Working with Council

REDWatch has worked closely with the City of Sydney Council to deliver many of the outcomes we have achieved.

With much of the area State Significant or Government owned REDWatch has worked with the Council to try and push the state government for better outcomes.

This work has involved push back against the state development agencies, ministers and developers. It covers appropriate development, open space, public access and heritage.

Working with Counterpoint

Since late 2005 REDWatch has held its monthly meetings at Counterpoint's Factory Community Centre in Waterloo.

Counterpoint have supported REDWatch not only by allowing us to use their centre but also by having their staff support REDWatch activities. A number of our office bearers also working for or have associations with Counterpoint.

In exchange REDWatch supports their initiatives with Public Housing tenants around issues like the Redevelopment of Waterloo.

It has been a beneficial partnership for us both.

Volunteers make REDWatch

In the end it is the people that give up their time to stand up for their community that make REDWatch.

Over 20 years there have been a lot of them. As people die or move on, new people take up the challenge.

Here's to the people of the next 20 years who will stand-up for their community.



L to R: Coord Group Members at 2011 Volunteer Awards: Geoff Turnbull, Lyn Turnbull, [Irene Doutney](#), Wendy McCaffrey (front), Desley Hass (rear), [Ross Smith](#), Mike Shreenan & [Trevor Davies](#)

To find out more about REDWatch

- For information about any of the history, sites or campaigns in this presentation visit www.redwatch.org.au. This presentation is based on the history of the Redfern, Eveleigh, Darlington and Waterloo (REDW) and REDWatch activities captured on our website.
- For more information on REDWatch and how it operates see the [About REDWatch](#) page on our website.
- For current information follow us on Facebook or ask to be added to our email updates by emailing us on mail@redwatch.org.au
- Our usually monthly meetings are open to the community so come along then and meet us or contact us on mail@redwatch.org.au